



Aerial View of Castillo de San Marcos National Monument (Oldest Fort in the United States) - St. Augustine, Fla. - ca. 1980s.



Castillo de San Marcos - National Monument - Showing Moat - St. Augustine, Fla. - ca. 1940s.



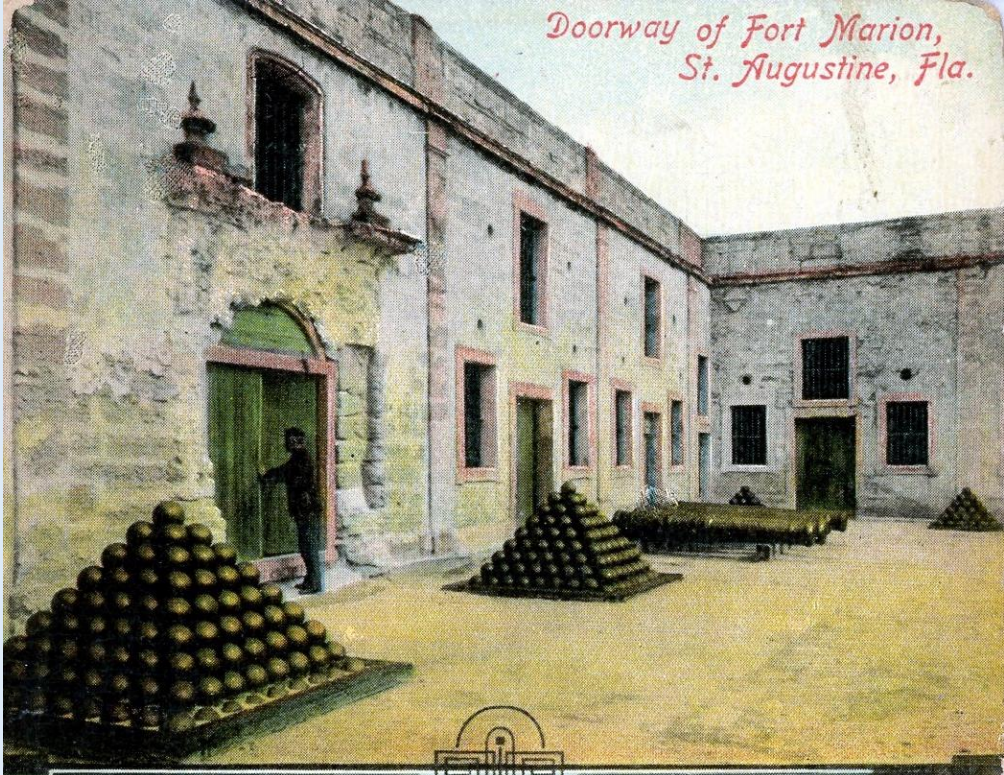
Castillo de San Marcos - Showing Hot Oven in Rear - St. Augustine, Fla. - ca. 1940s.

*Castle San Marcos National Monument, St. Augustine, Fla. 1672-1756*



5A-H730

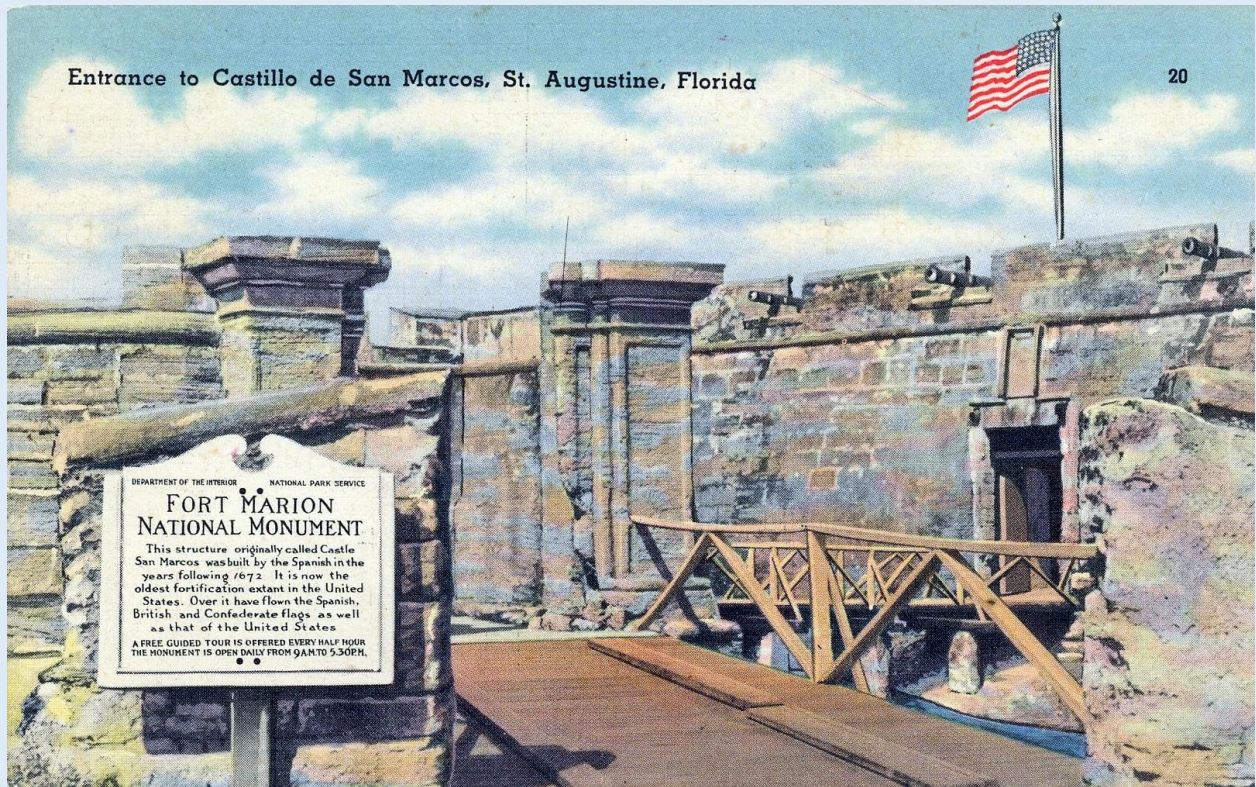
Castle San Marcos National Monument (1672-1756) - St. Augustine, Fla. - ca. 1930s.



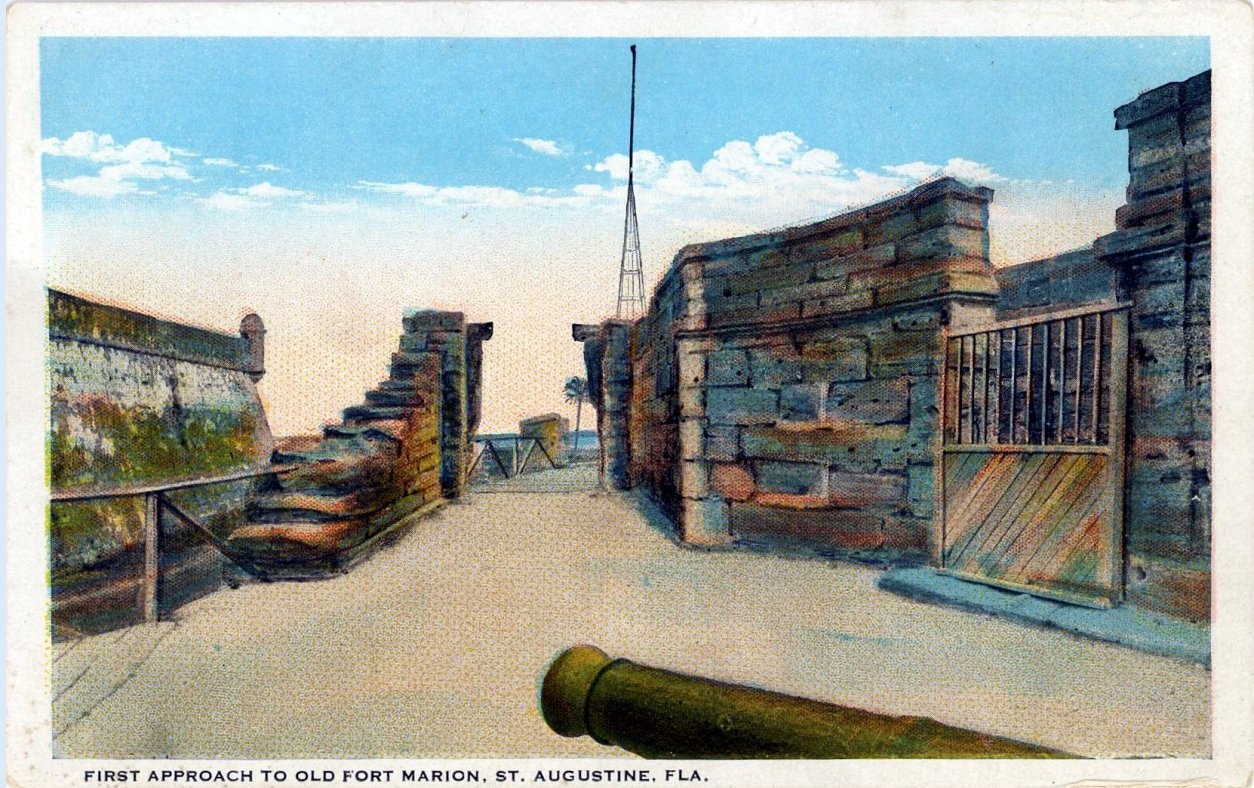
Castle San Marcos National Monument (1672-1756) - St. Augustine, Fla. - ca. 1930s.



Dungeons, Castillo de San Marcos National Monument - St. Augustine, Fla. - ca. 1930s.



Entrance to Castillo de San Marcos - St. Augustine, Fla. - ca. 1948.



FIRST APPROACH TO OLD FORT MARION, ST. AUGUSTINE, FLA.

First Approach to Old Fort Marion - St. Augustine, Fla. - ca. 1930s.

FORT MARION, THE OLD WATCH TOWER, ST. AUGUSTINE, FLA.



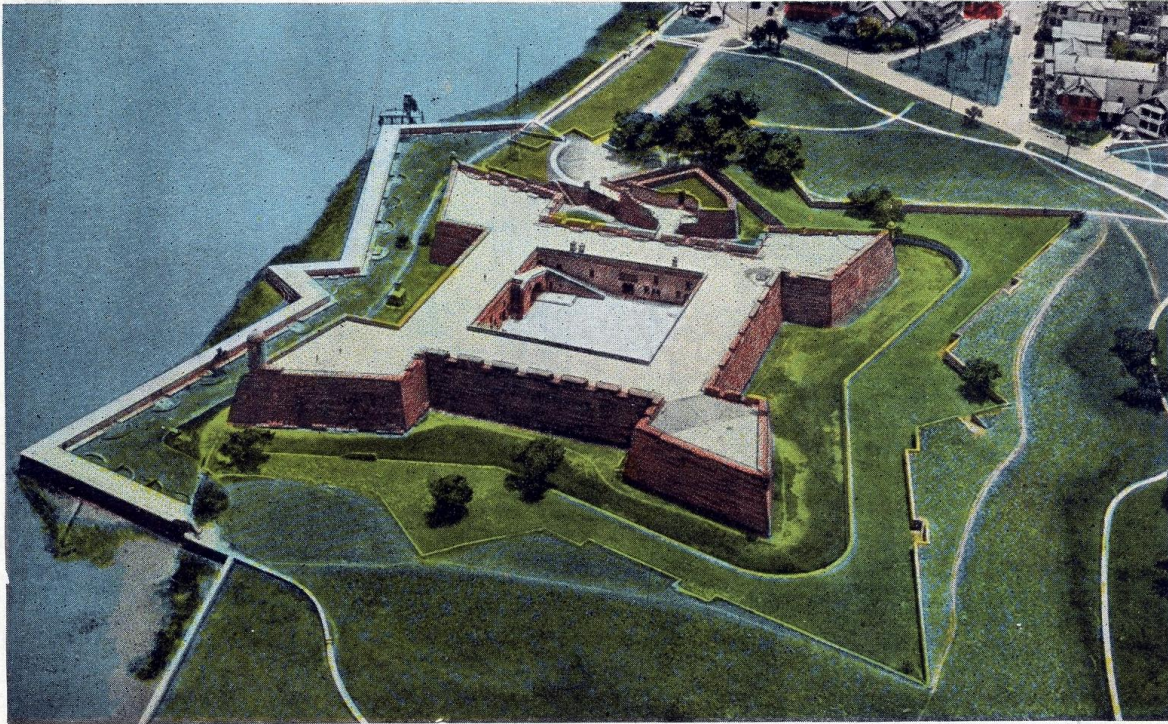
Fort Marion - The Old Watch Tower - St. Augustine, Fla. - ca. 1920s.



Fort Marion (the Spanish started construction in 1565) - St. Augustine, Fla. - ca. 1930s.

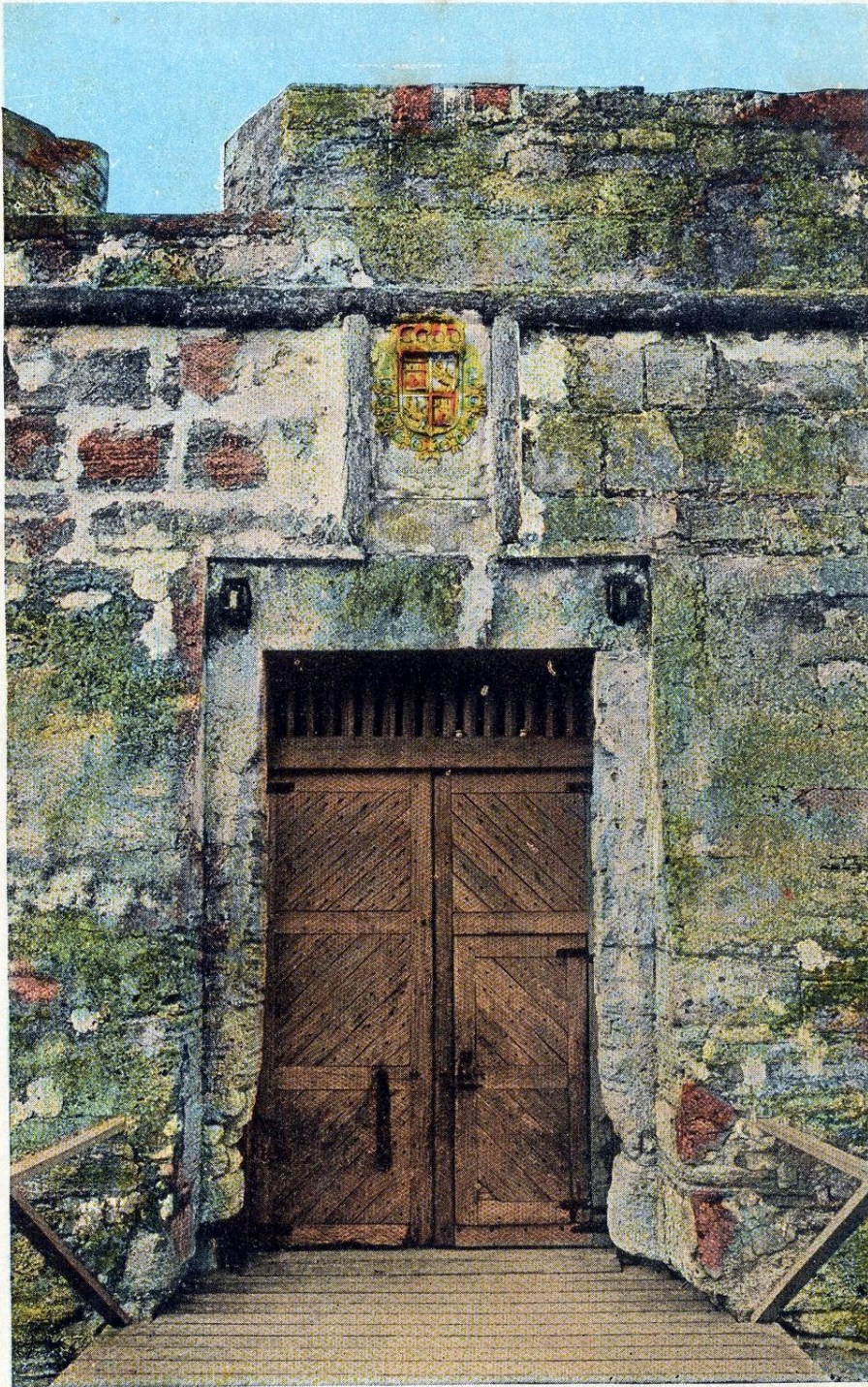
(10)

PHOTO BY F. V. RAHNER, ST. AUGUSTINE, FLA.,



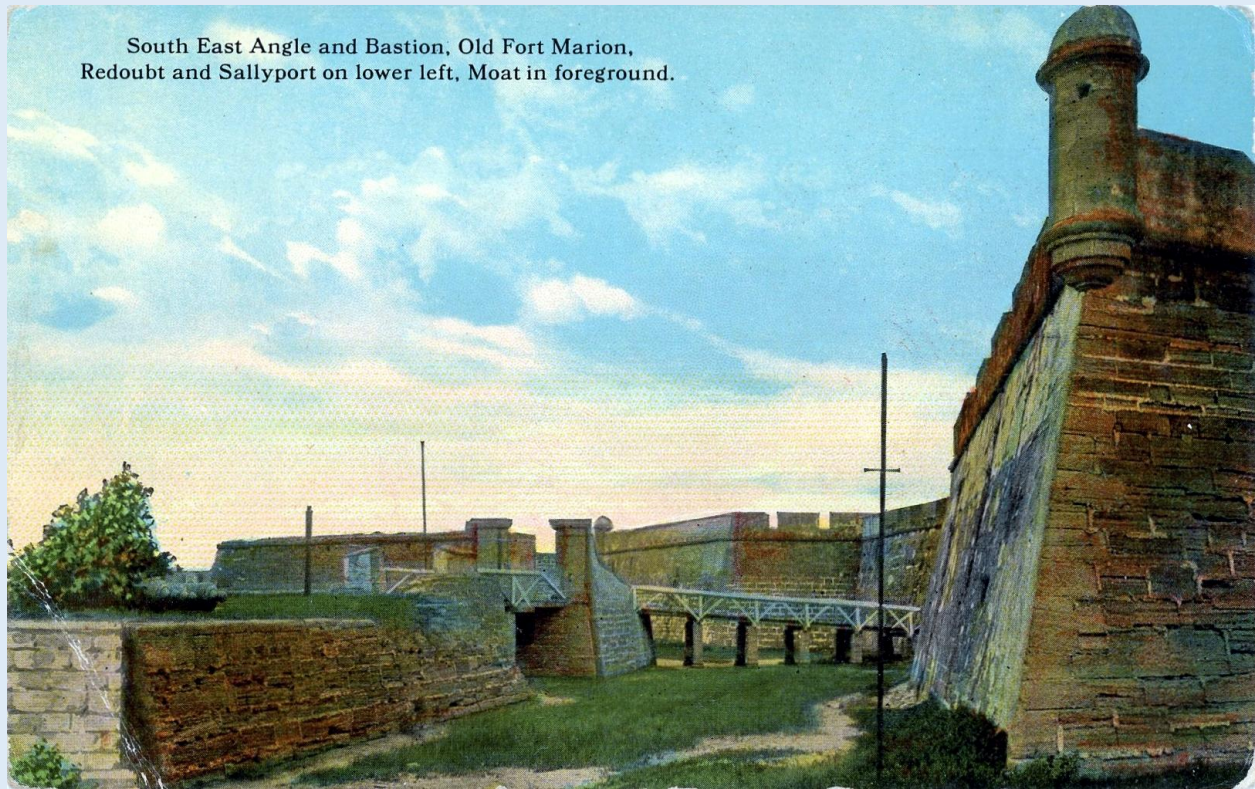
FROM SEAPLANE "LADY BALTIMORE II," EASTER AIRWAYS, INC., BALTIMORE, MD.

From Seaplane 'Lady Baltimore II' - Easter Airways, Inc. - Fort Marion - St. Augustine, Fla. - ca. 1920s.

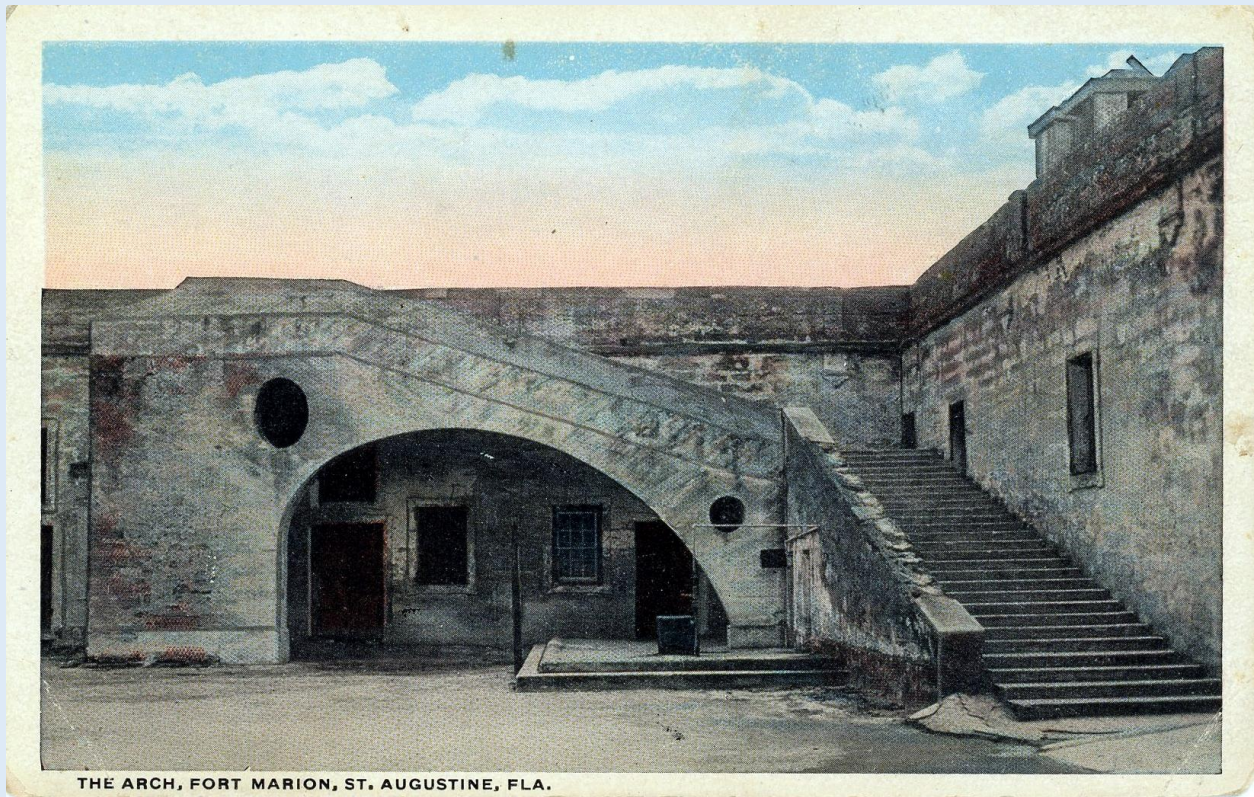


PORTCULLIS, FORT MARION, ST. AUGUSTINE, FLA. BUILT 1665-1756.

Portcullis, Fort Marion - St. Augustine, Fla. - ca. 1920s.



South East Angle and Bastion - Old Fort Marion - St. Augustine, Fla. - ca. 1920s.



THE ARCH, FORT MARION, ST. AUGUSTINE, FLA.

The Arch - Fort Marion - St. Augustine, Fla. - 1920s.

Copyright 1904 by W. J. Harris.



THE FAMOUS SECRET DUNGEON, FORT MARION, ST. AUGUSTINE, FLA.

The Famous Secret Dungeon - Fort Marion - St. Augustine, Fla. - ca. 1930s.



WATCH TOWER, FORT MARION, ST. AUGUSTINE, FLA.

Watch Tower - Fort Marion - St. Augustine, Fla. - ca. 1920s.