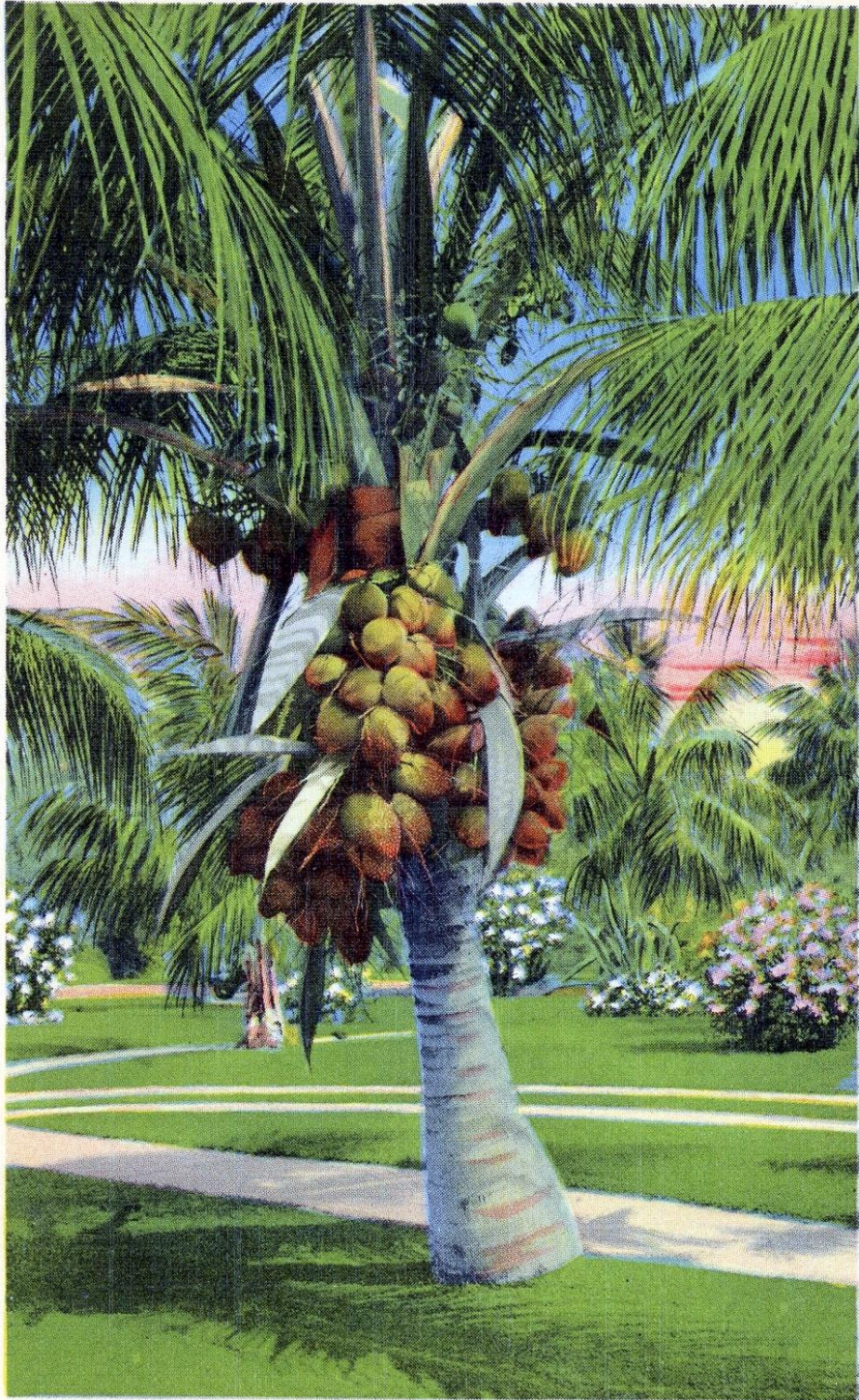


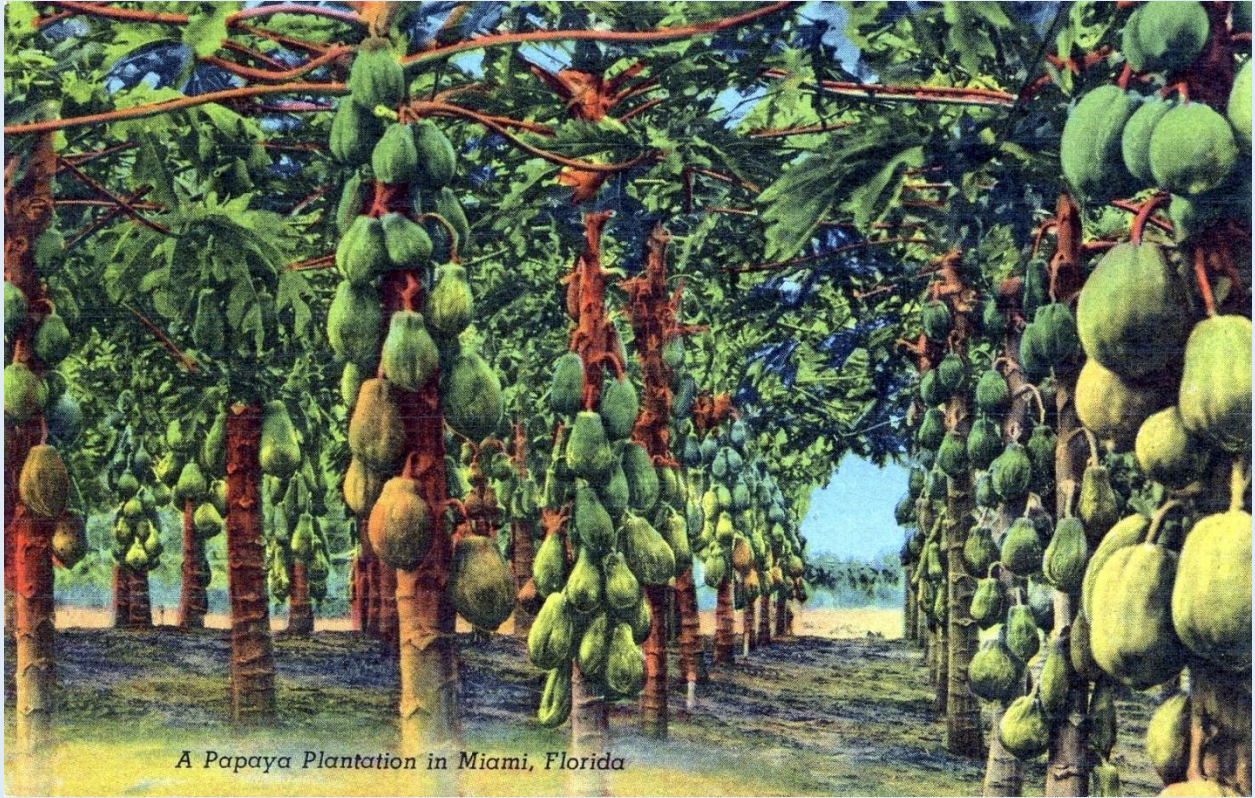
M-86—A Coconut Palm

Miami, Florida



9A.H992

A Coconut Palm - Miami, Fla. - ca. 1950s.

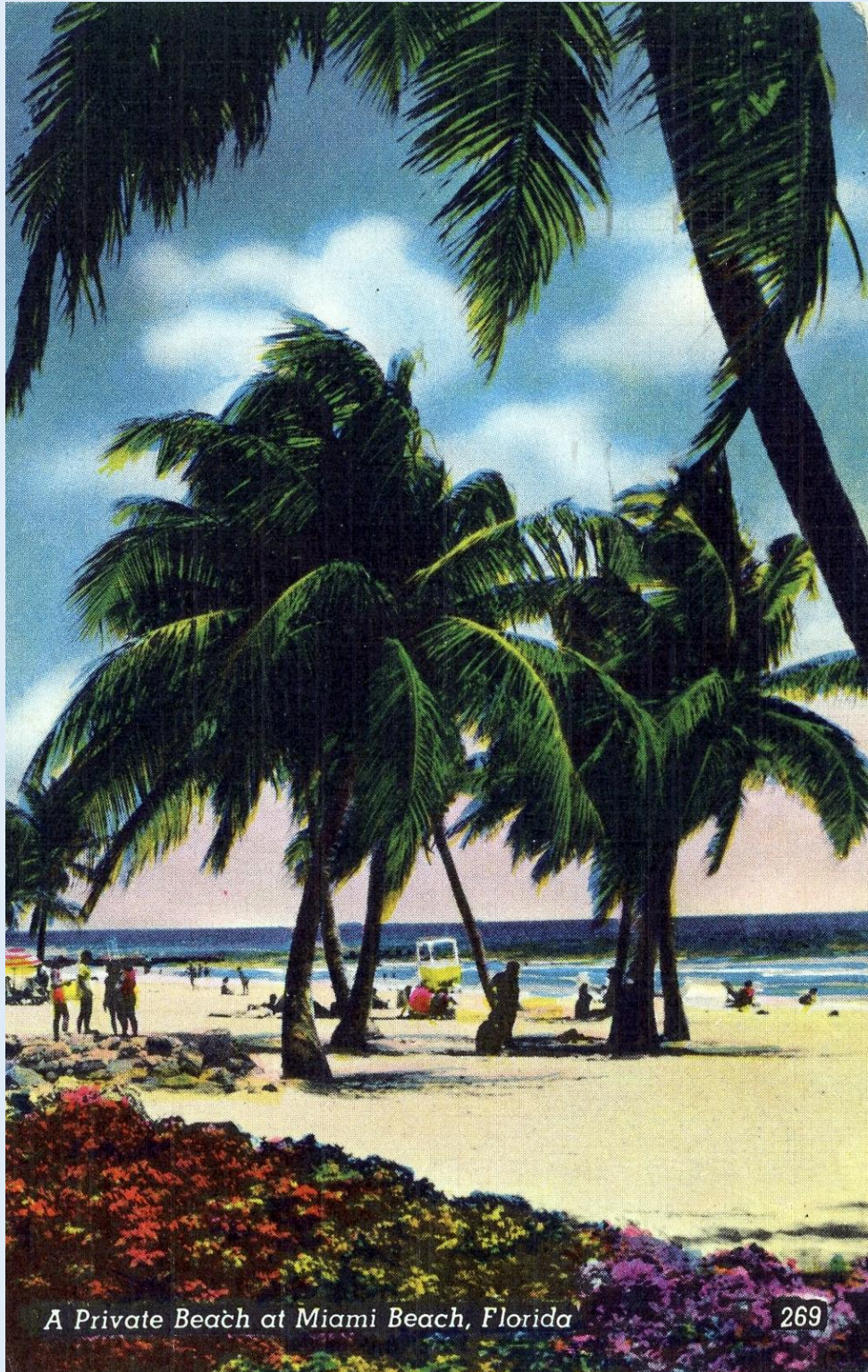


A Papaya Plantation in Miami, Florida

A Papaya Plantation in Miami, Fla. - ca. 1940s.



A Pretty Garden in Miami, Fla. - ca. 1941.



A Private Beach at Miami Beach, Fla. - ca. 1950.



A Row Royal Poinciana Trees - Miami, Fla. - ca. 1940s.

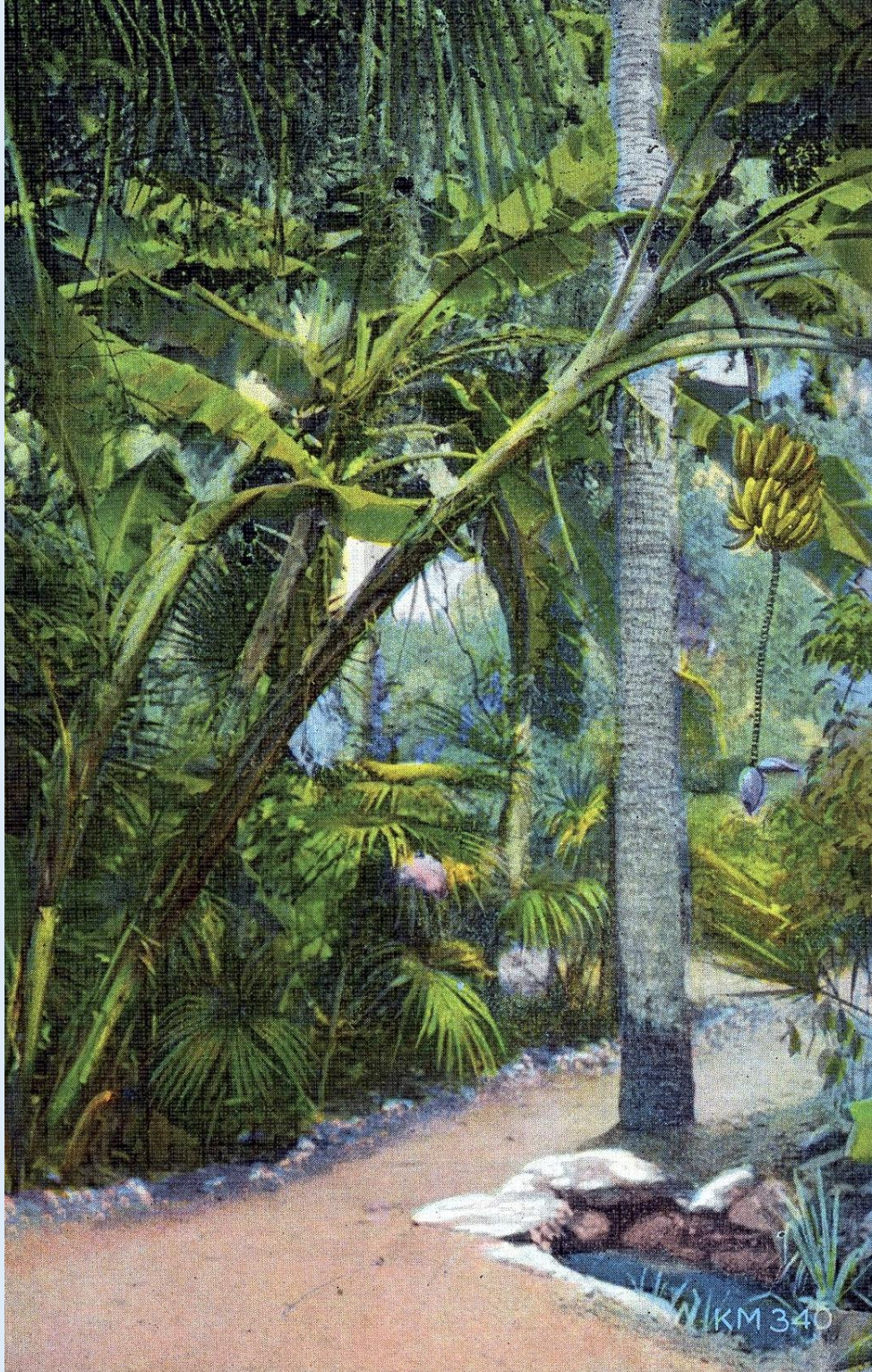
A TYPICAL ROAD AMONG THE PALMS, NEAR MIAMI, FLA.



A Typical Road among the Palms - Miami, Fla. - ca. 1930s.



An Avenue of Palms - Miami Beach, Fla. - ca. 1940s.



Banana Tree showing Bud and Fruit near Miami, Fla. - ca. 1950s.



Banyan Tree in Coconut Grove - Miami, Fla. - ca. 1940s.

Beautiful Banana Tree Bearing Fruit, Miami, Fla.



Beautiful Banana Tree Bearing Fruit - Miami, Fla. - ca. 1940s.



Beautiful Rock Garden in Bayfront Park - Miami, Fla. - ca. 1940s.



Bougainvillea Vine, Deering Estate - Miami, Fla. - ca. 1940s.



Coral Flamingo, Rare Bird Farm, Miami, Fla. - ca. 1940s.



Entrance and Driveway to a Beautiful Estate - Miami, Fla. - ca. 1940.



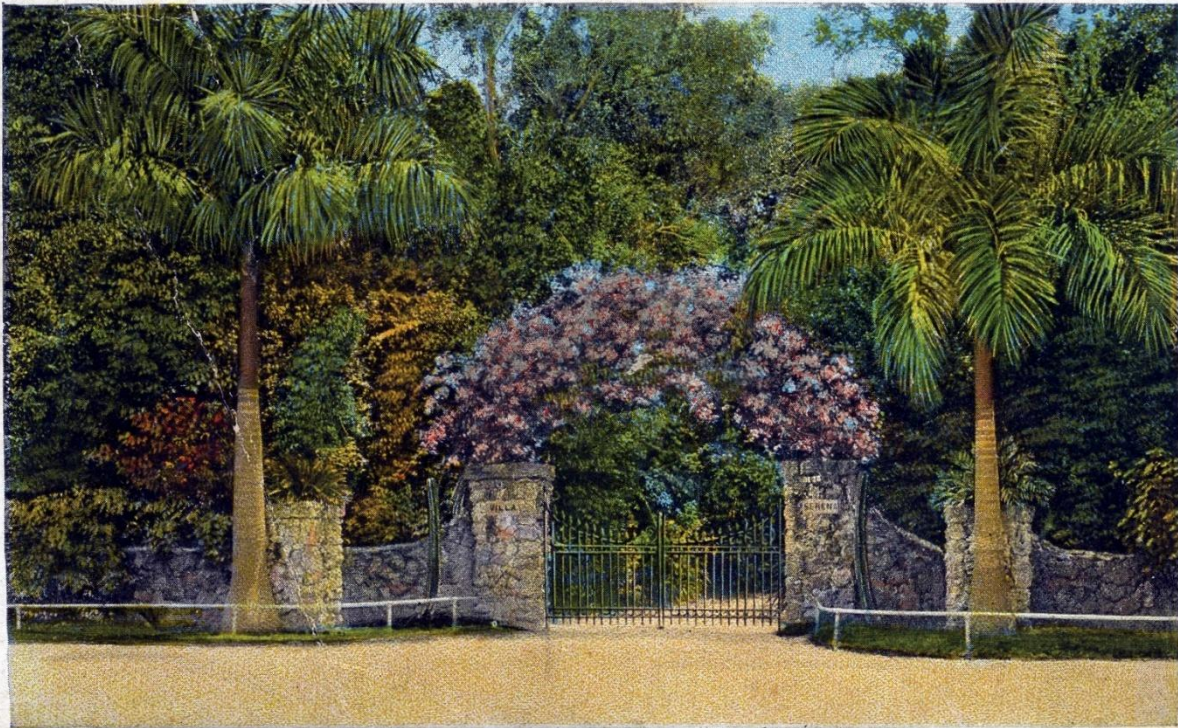
Fabulous Vizcaya - 30-acre estate of the late James Deering - Miami, Fla. - ca. 1970s.



Flame Vine (Pyrostegia Venusta) - Miami, Fla. - ca. 1940s.



Flamingos in Pool, Rare Bird Farm - Miami, Fla. - ca. 1940s.



GATES TO WM. JENNINGS BRYAN HOME, MIAMI, FLORIDA.

Gates to Wm. Jennings Bryan Home - Miami, Fla. - ca. 1925.



Graceful Flamingos - Miami, Fla. - ca. 1940s.



Hibiscus Tree in Blossom - Miami, Fla. - ca. 1930s.



Liberachi of the monkey world at Monkey Jungle - Miami, Fla. - ca. 1950s.



232N

Monkey Jungle
22 Miles South of Miami, Florida

EVOLUTION
THE MONKEYS VIEWPOINT

Three monkeys sat in a Coconut tree
Discussing things as they're said to be.
Said one to the others; "Now listen you two,
There's a certain rumor that can't be true.
That man descended from our noble race—
The very idea! It's a dire disgrace.
No monkey ever deserted his wife,
Starved her baby and ruined her life.
And you've never known a mother monk
To leave her baby with others to bunk,
Or pass them on from one to another
'Til they hardly know who is their mother.
And another thing! You will never see
A monk build a fence 'round a coconut tree
And let the coconuts go to waste,
Forbidding all other monks to taste.
Why if I put a fence around this tree
Starvation would force you to steal from me.
Here's another thing a monk won't do,
Go out at night and get on a stew,
Or use a gun or club or knife
To take some other monkey's life.
Yes! man descended, the ornery cuss,
But brother he didn't descend from us."

Monkey Jungle - Evolution - The Monkey's Viewpoint - Miami, Fla. - ca. 1950s.



Mother Love at the Monkey Jungle - Miami, Fla. - ca. 1940s.



Orange Tree in Blossom and Avenue of Royal Palms near Miami, Fla. - ca. 1940s.

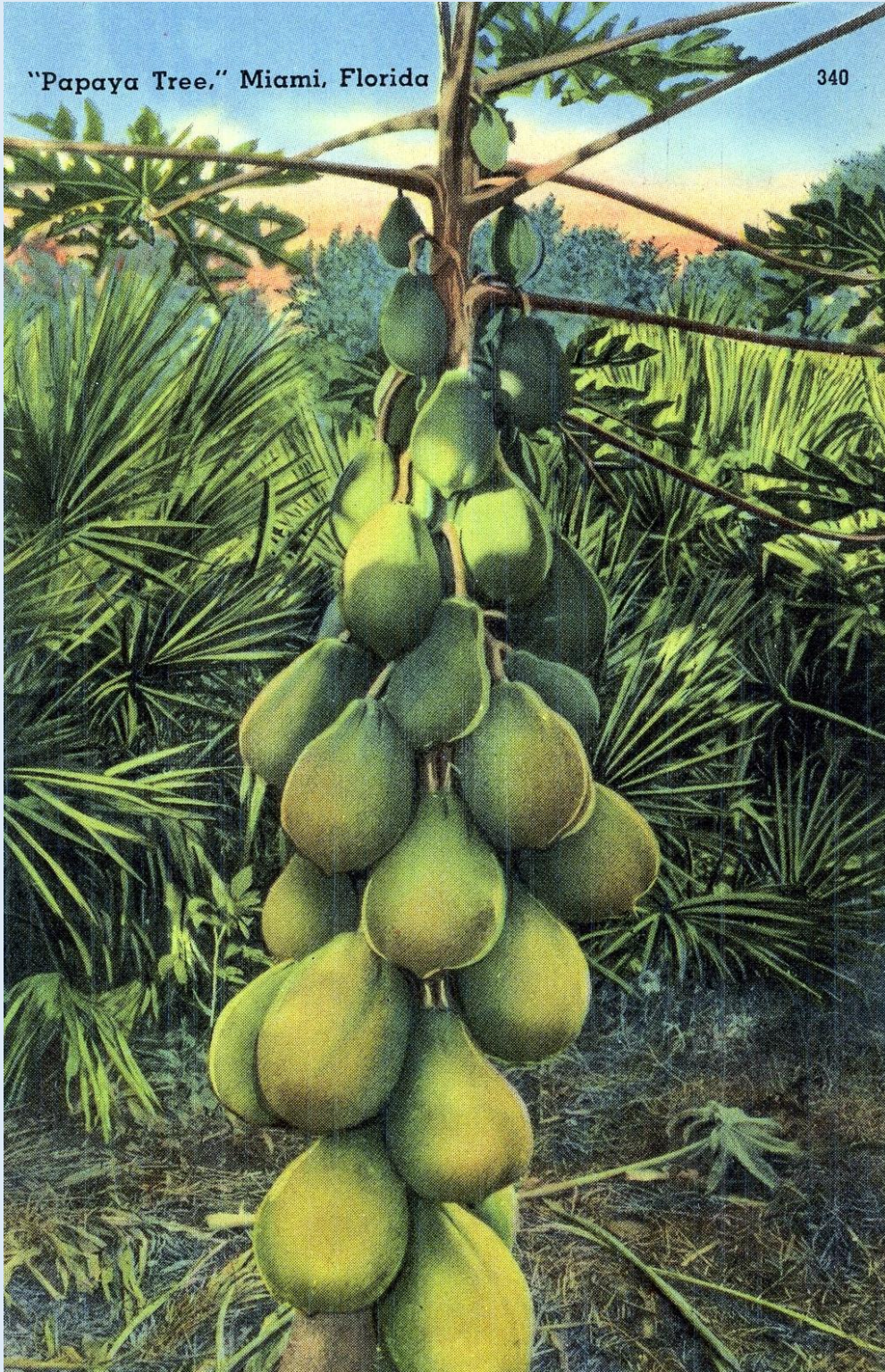


Palms along the Shore - Miami, Fla. - ca. 1932.

85:—PALMS. CLOUDS AND MOONLIGHT. MIAMI BEACH. FLORIDA.



Palms, Clouds and Moonlight - Miami, Fla. - ca. 1942.



Papaya Tree - Miami, Fla. - ca. 1940s.



Relaxing in Tropical Bayfront Park - Miami, Fla. - ca. 1947.

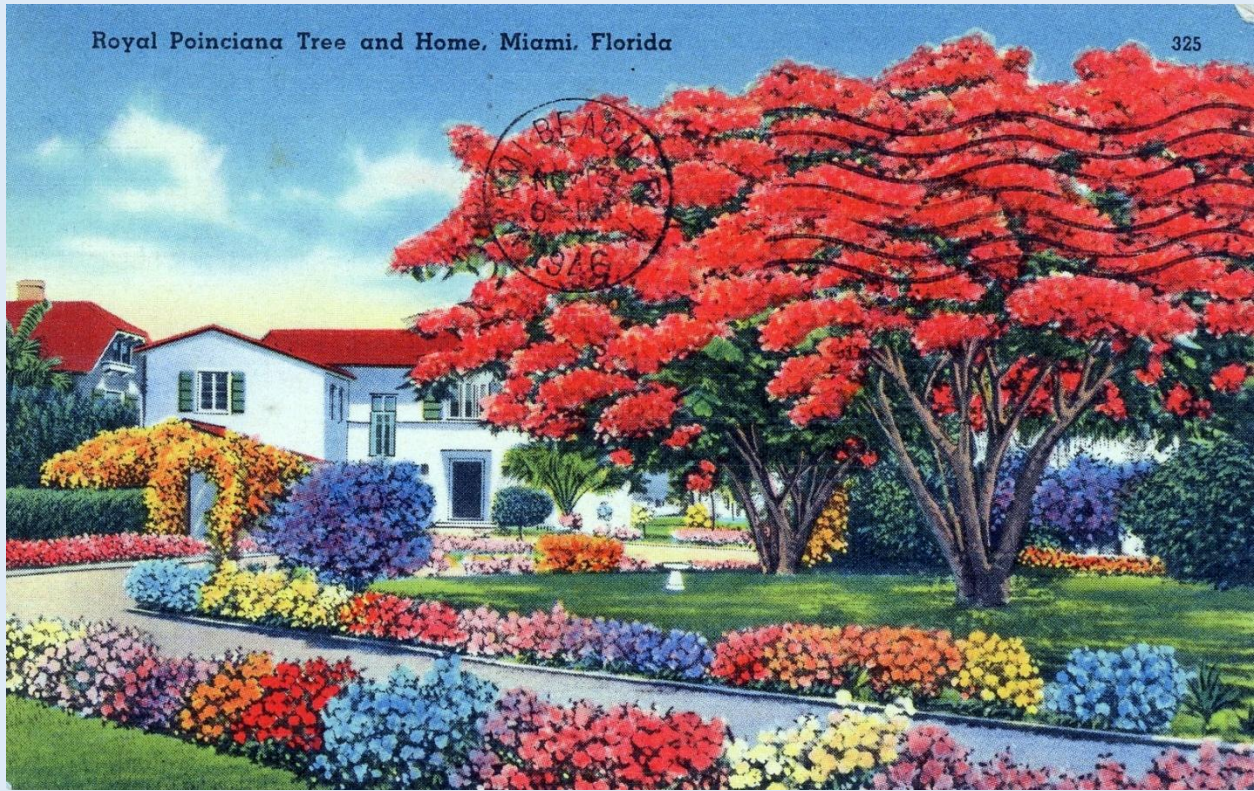


301

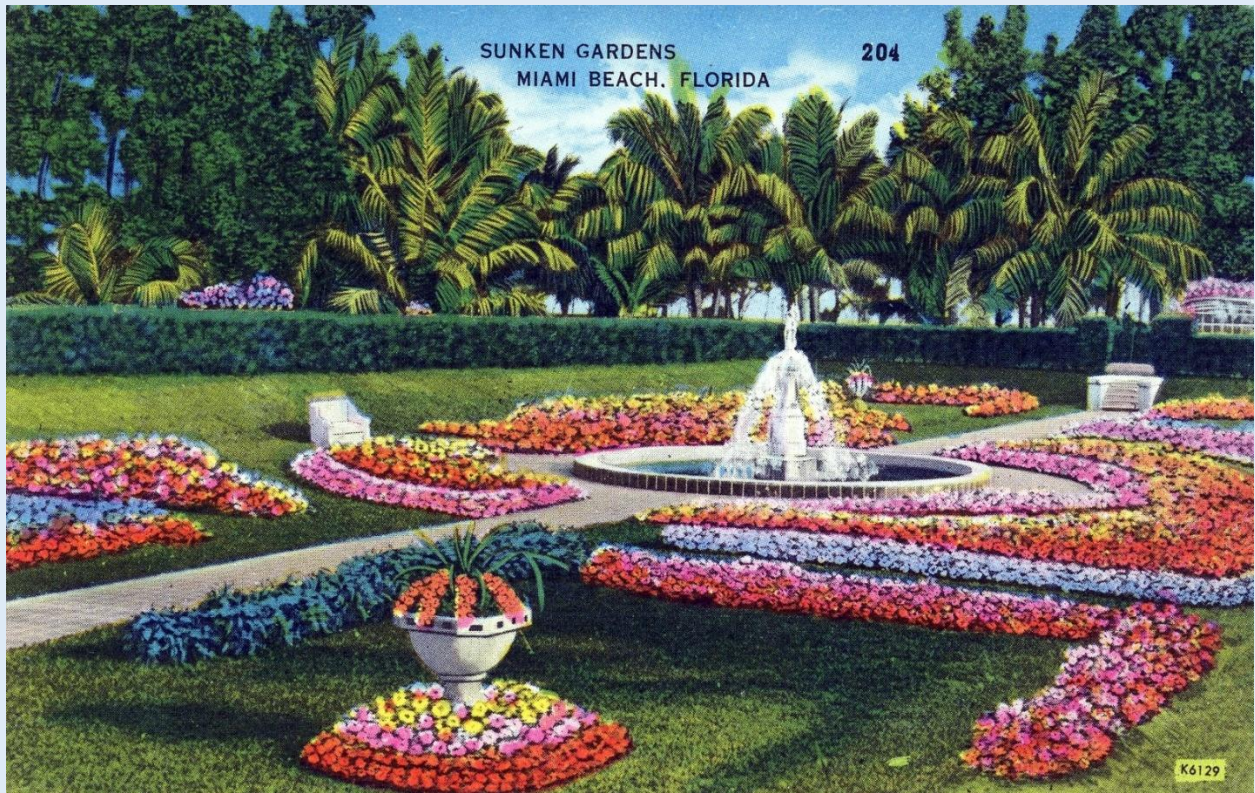
Royal Palm-lined Drive, Miami, Florida

Photo by Romer

Royal Palm-Lined Drive - Miami, Fla. - ca. 1940s.



Royal Poinciana Tree and Home - Miami, Fla. - ca. 1946.



Sunken Gardens - Miami Beach, Fla. - ca. 1940s.



The Bandshell in Tropical Bayfront Park - Miami, Fla. - ca. 1940s.



The Flame Vine and Bougainvillea,
Miami, Florida

344

The Flame Vine and Bougainvillea - Miami, Fla. - ca. 1940s.



The Golden Shower Tree - Miami, Fla. - ca. 1940s.



The Monkey Jungle - three monkeys in a tree - Miami, Fla. - ca. 1950s.

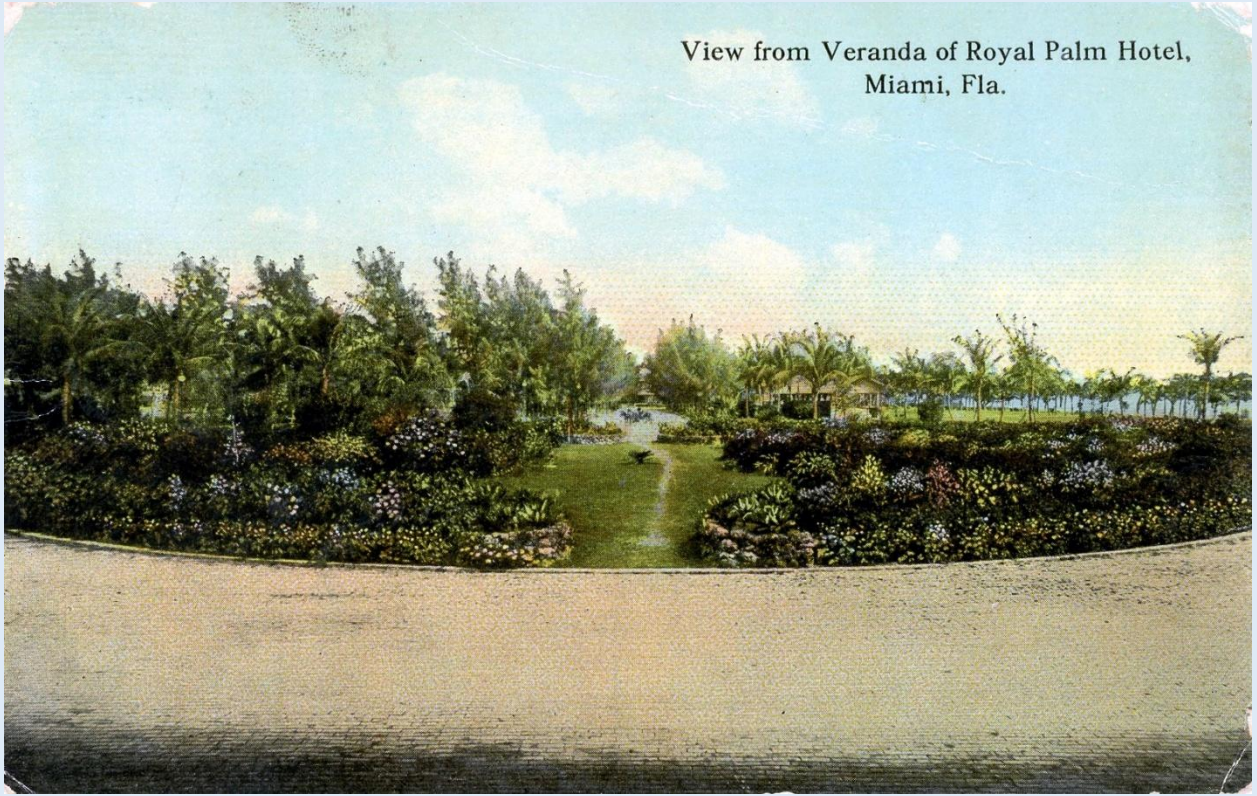


The Sausage Tree - Miami, Fla. - ca. 1948.



The Sausage Tree (Kigelia Pinata) - Miami, Fla. - ca. 1940s.

View from Veranda of Royal Palm Hotel,
Miami, Fla.



View from Veranda of Royal Palm Hotel - Miami, Fla. - ca. 1920s.