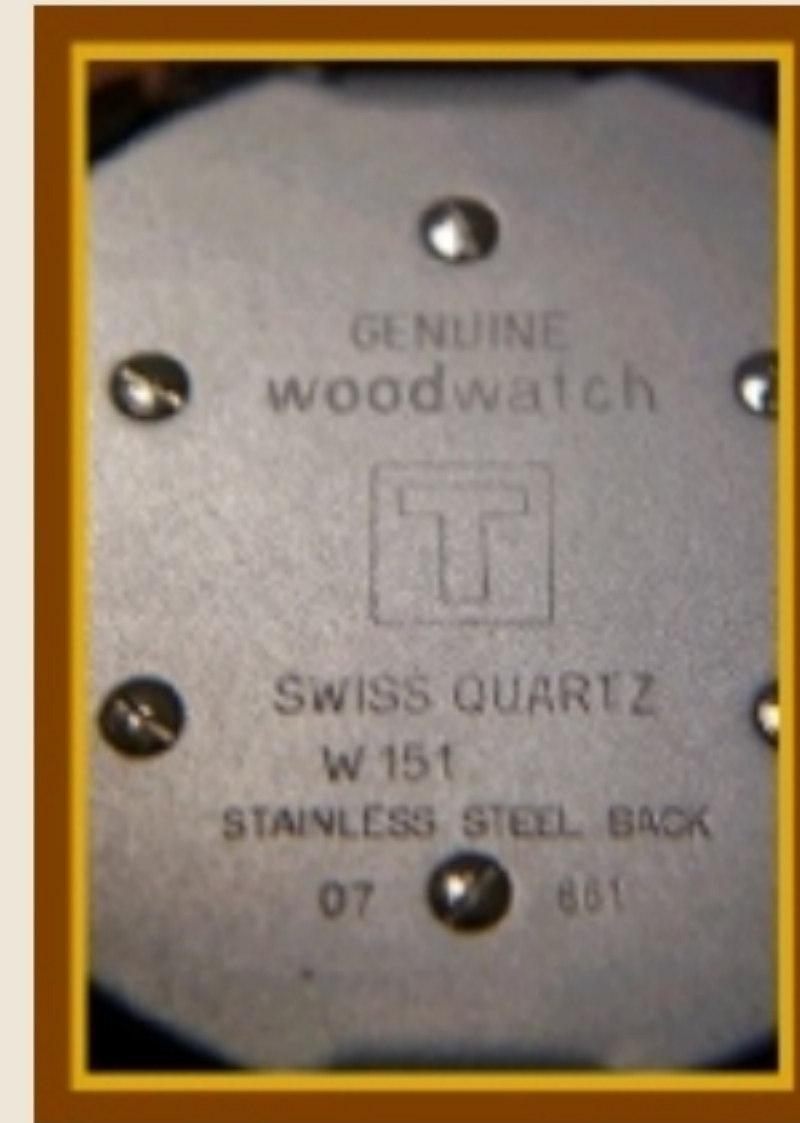


Tissot - Burly Walnut Wood Watch - W151 - Wristwatch (circa 1987)



WNS-MDN-5012 - Tissot - Burly Walnut Wood Watch - Full Front View



WNS-MDN-5012 - Tissot - Burly Walnut Wood Watch - Back of Case View



WNS-MDN-5012 - Tissot - Burly Walnut Wood Watch - Dial Close Up View



WNS-MDN-5012 - Tissot - Burly Walnut Wood Watch - Full Front View on Box

Case: Round solid Burly Walnut Wood with a stainless steel back - 38 mm wide - 40 mm including the crown and 6 mm thick. Crown at the 3 o'clock position. Plastic mineral crystal.

Dial: Burly Walnut signed Tissot and Swiss Made. The hour and minute hands are both a beige color.

Movement: Swiss Quartz movement.

Bracelet: Tissot brown braided genuine leather with a brown buckle signed Tissot.

Comments: A solid wood wristwatch by Tissot.

Item ID: WNS-MDN-5012 - (S)