



Airview of Key West, Fla. - ca. 1970s



Bahia Honda Bridge - outstanding sights along the Florida Keys - Key West, Fla. - ca. 1960s

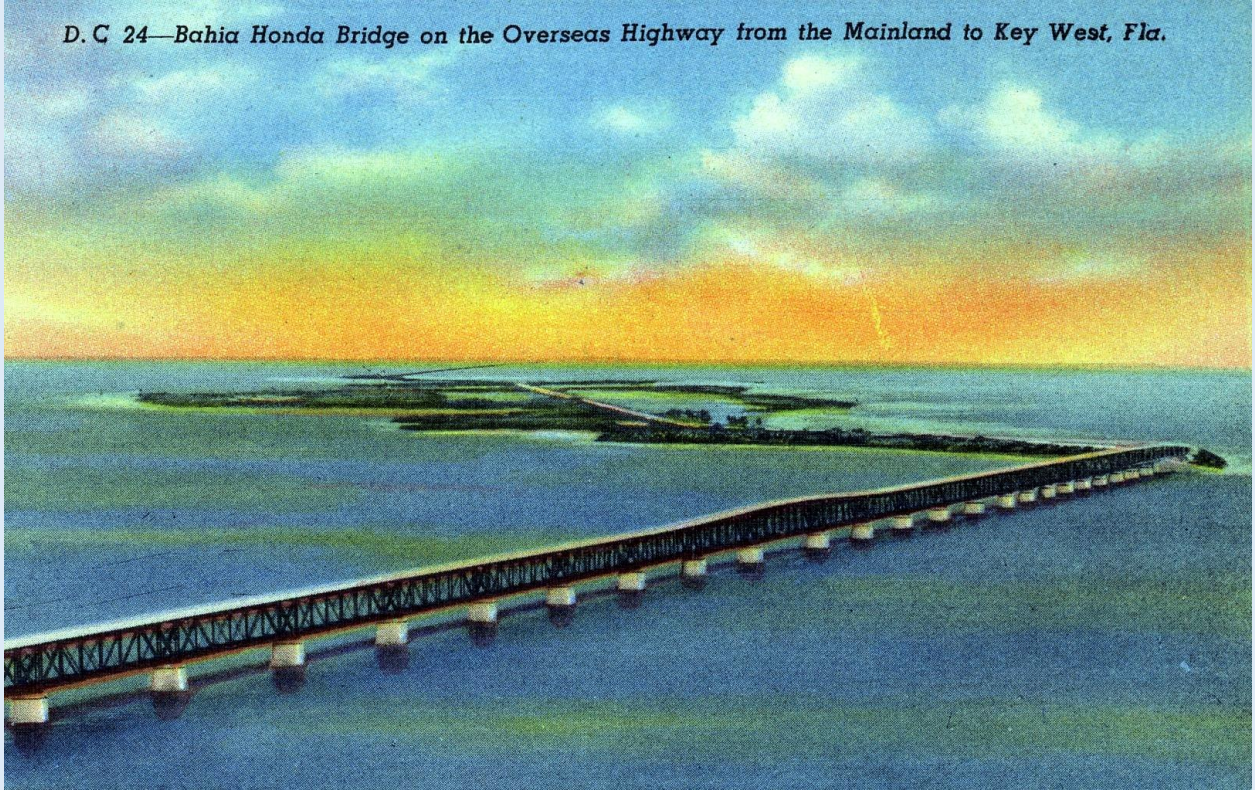


Bahia Honda Bridge - posing for pictures - Key West, Fla. - ca. 1952



Bahia Honda Bridge on the Overseas Highway - Key West, Fla. - ca. 1960s

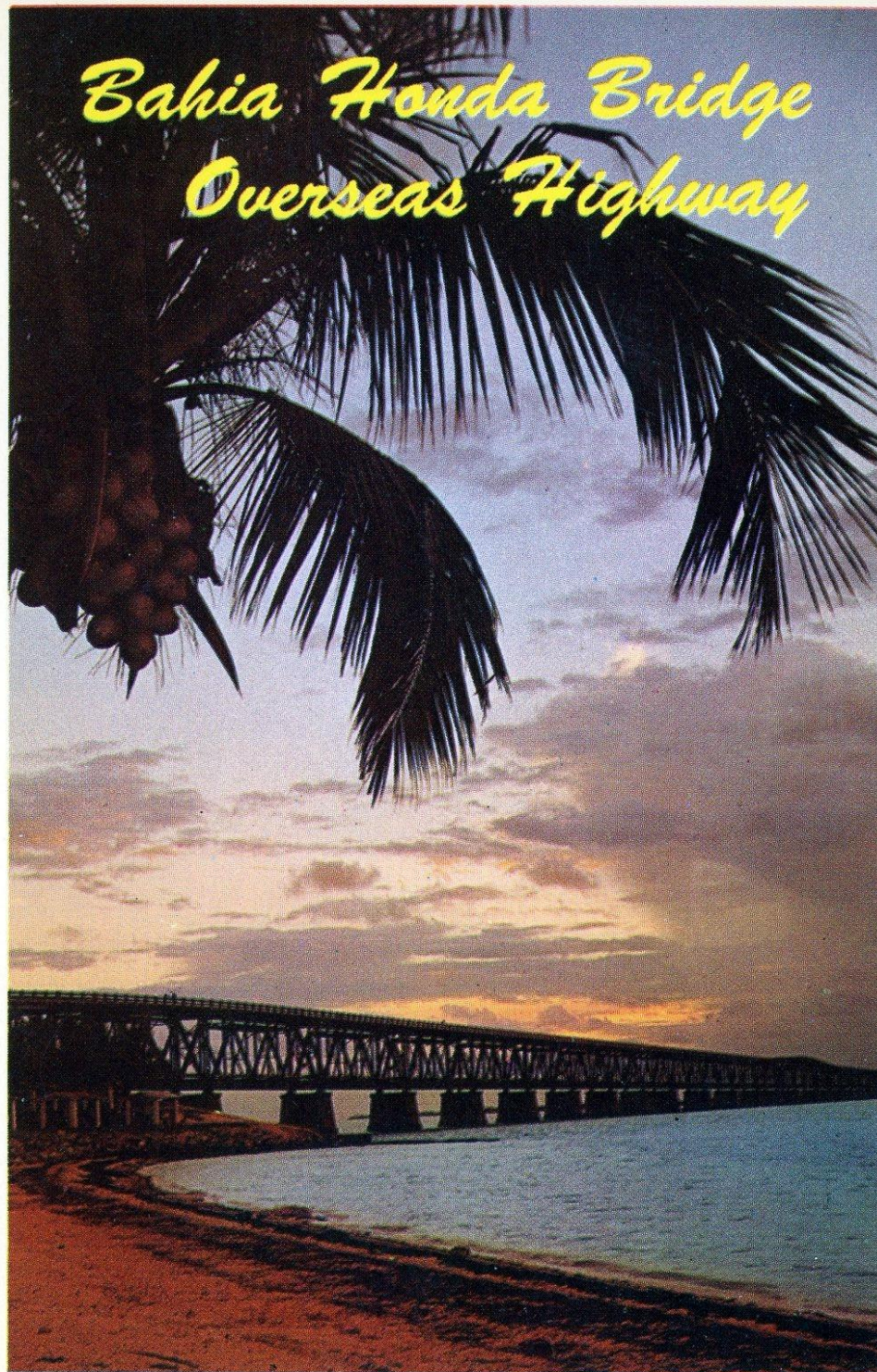
D. C 24—Bahia Honda Bridge on the Overseas Highway from the Mainland to Key West, Fla.



Bahia Honda Bridge on the Overseas Highway from mainland to Key West, Fla. - ca. 1940s

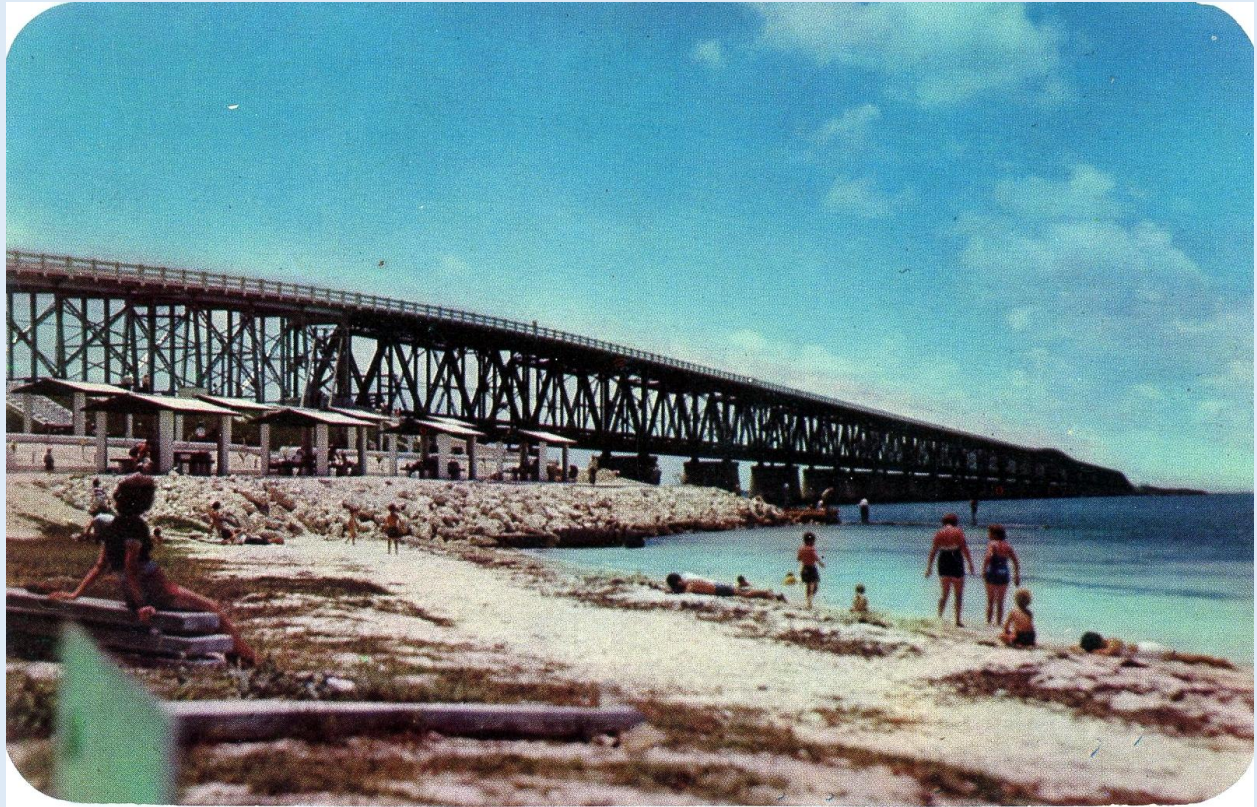


Bahia Honda Bridge on the Overseas Highway to Key West, Fla. - ca. 1960s



Sunset on the Bahia Honda Bridge, Overseas Highway

Bahia Honda Bridge Overseas Highway - Key West, Fla. - ca. 1960s



Bahia Honda Bridge Overseas Highway between the mainland and Key West, Fla. - ca. 1960s

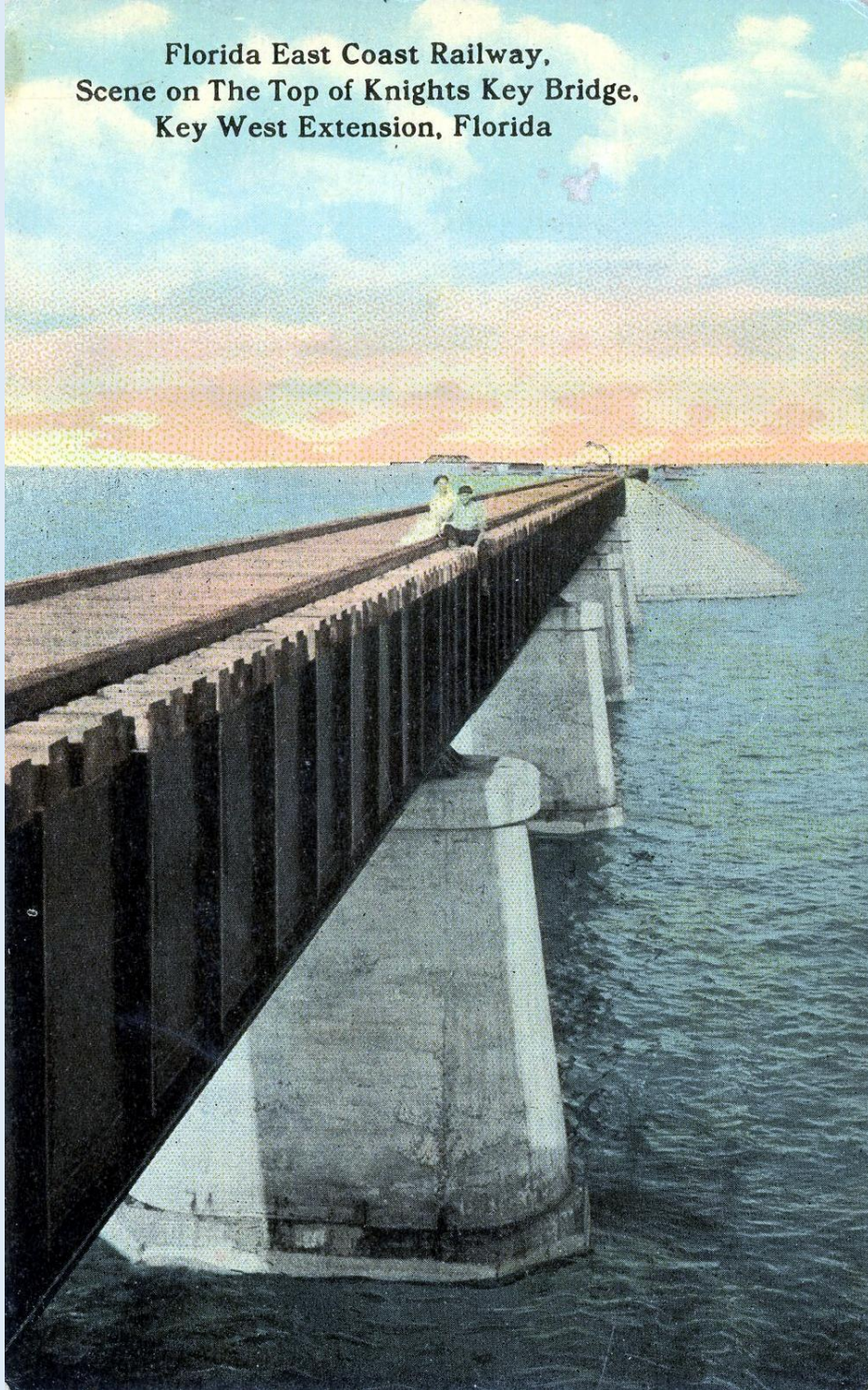


Bahia Honda Highest Span in the Overseas Highway System - Key West, Fla. - ca. 1950s



Fishing is a popular pastime for tourists on the Overseas Highway - Key West, Fla. - ca. 1960s

**Florida East Coast Railway,
Scene on The Top of Knights Key Bridge,
Key West Extension, Florida**



Florida East Coast Railway - Scene on the Top of Knights Key Bridge - Key West Extension -
Key West, Fla. - ca. 1930s

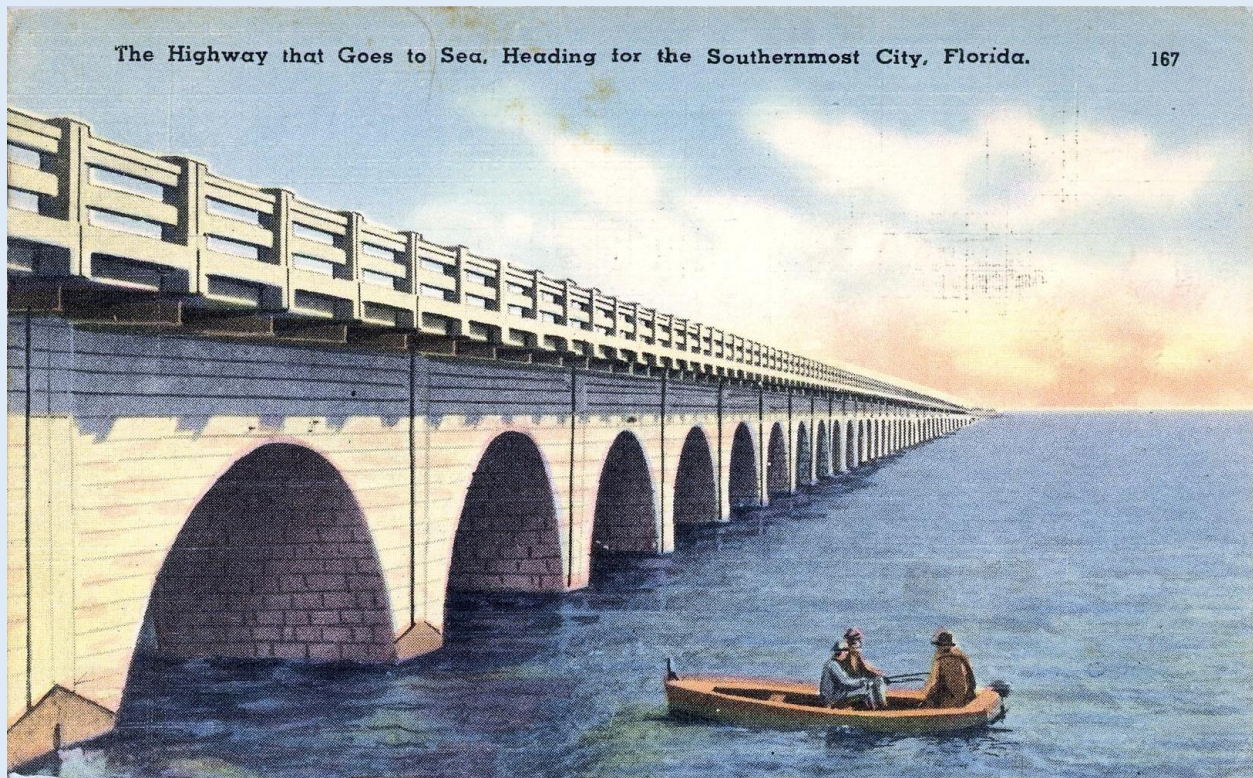


99702

Florida East Coast Train on Key West Extension at Night - ca. 1930s



Highway Approach from the Air - Key West, Fla. - ca. 1940s



Highway that goes to Sea - Key West, Fla. - ca. 1950



Jewfish Creek Bridge on the Famous Overseas Highway to Key West, Fla. - ca. 1960s



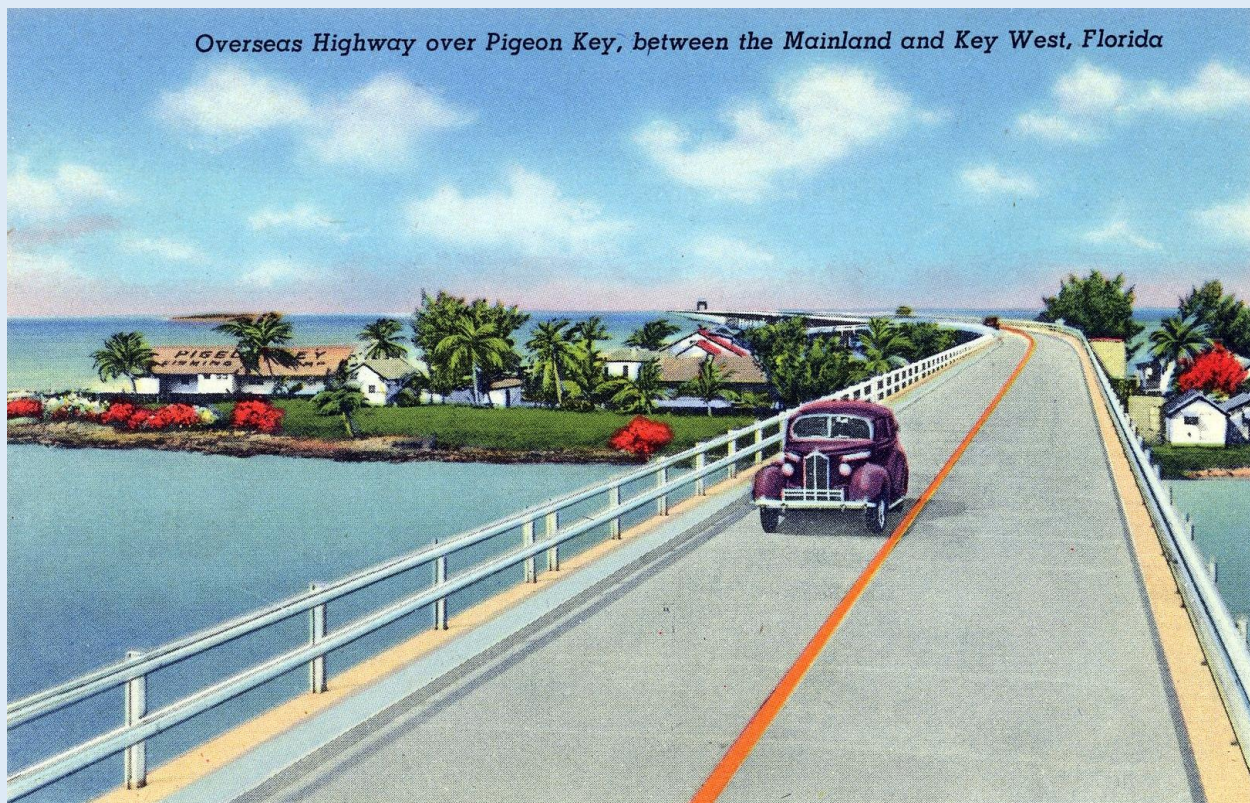
New Overseas Highway above 'Pigeon Key' on the way to Key West, Fla. - ca. 1930s



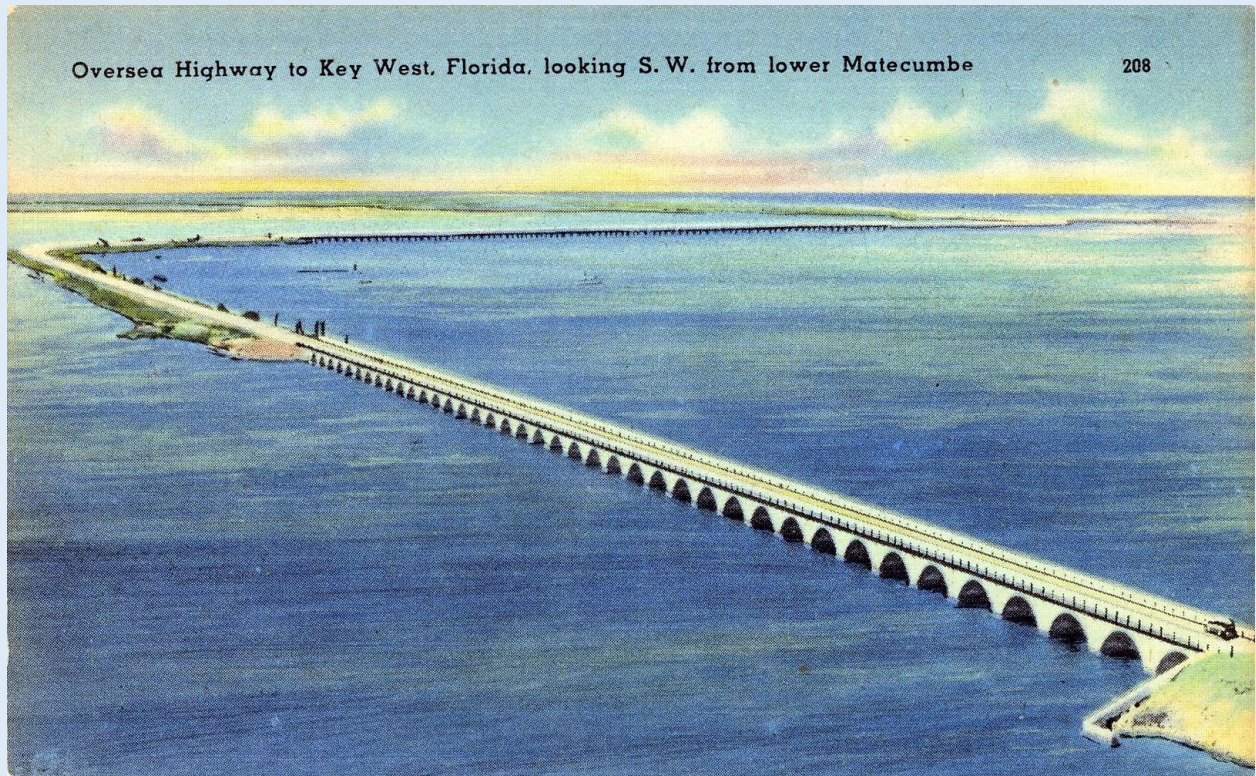
Off to Sea with No Seasickness over the new Overseas Highway - Key West, Fla. - ca. 1940s



One of the many bridges on the Overseas Highway - Key West, Fla. - ca. 1960s



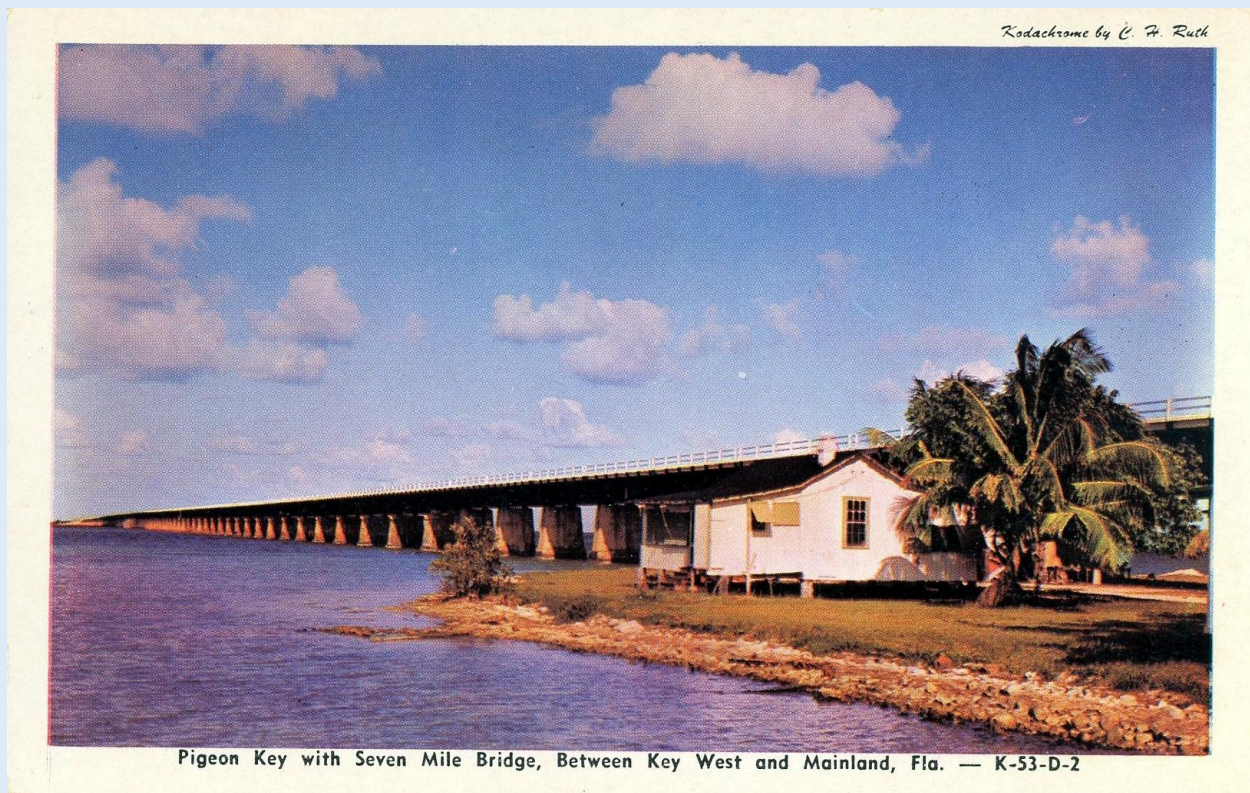
Overseas Highway over Pigeon Key between Mainland and Key West, Fla. - ca. 1940s



Overseas Highway to Key West - Looking S.W. from lower Matecumbe - Key West, Fla. - ca. 1940s



Overseas Highway to Key West, Fla. - ca. 1960s



Pigeon Key with Seven Mile Bridge - between mainland and Key West, Fla. - ca. 1930s



Pigeon Key with Seven Mile Bridge - between mainland and Key West, Fla. - ca. 1950



Scene along the Overseas Highway - Key West, Fla. - ca. 1963

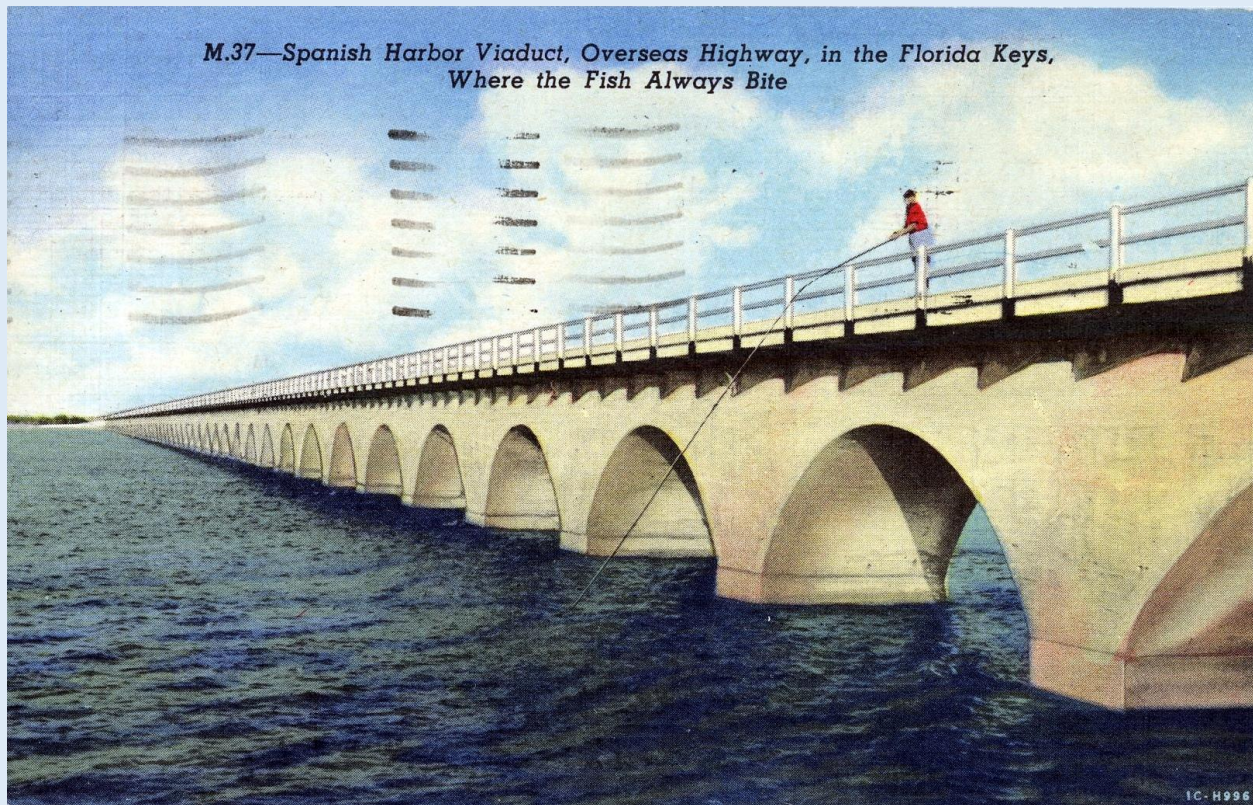


SEVEN MILE BRIDGE
BETWEEN KEY WEST AND MAINLAND, FLA.—K39

Seven Mile Bridge between mainland and Key West, Fla. - ca. 1955



Seven Mile Bridge to Key West, Fla. - ca. 1960s



Spanish Harbor Viaduct, Overseas Highway, Where the Fish Always Bite - Key West, Fla. - ca. 1956



Sunset over Bahia Honda Bridge

Sunset over Bahia Honda Bridge - Key West, Fla. - ca. 1960s



Sunset over Bahia Honda Bridge - Overseas Highway - Key West, Fla. - ca. 1940s



Sunshine Skyway Bridge - 15 miles long - Key West, Fla. - ca. 1960s



Sunshine Skyway Bridge - longest water crossing in the world - Key West, Fla. - ca. 1960



The Seven Mile Bridge over Pigeon Key Overseas Highway to Key West, Fla. - ca. 1960s