



A Beautiful Spot in Oriental Gardens on San Jose Blvd. - Jacksonville, Fla. - ca. 1948



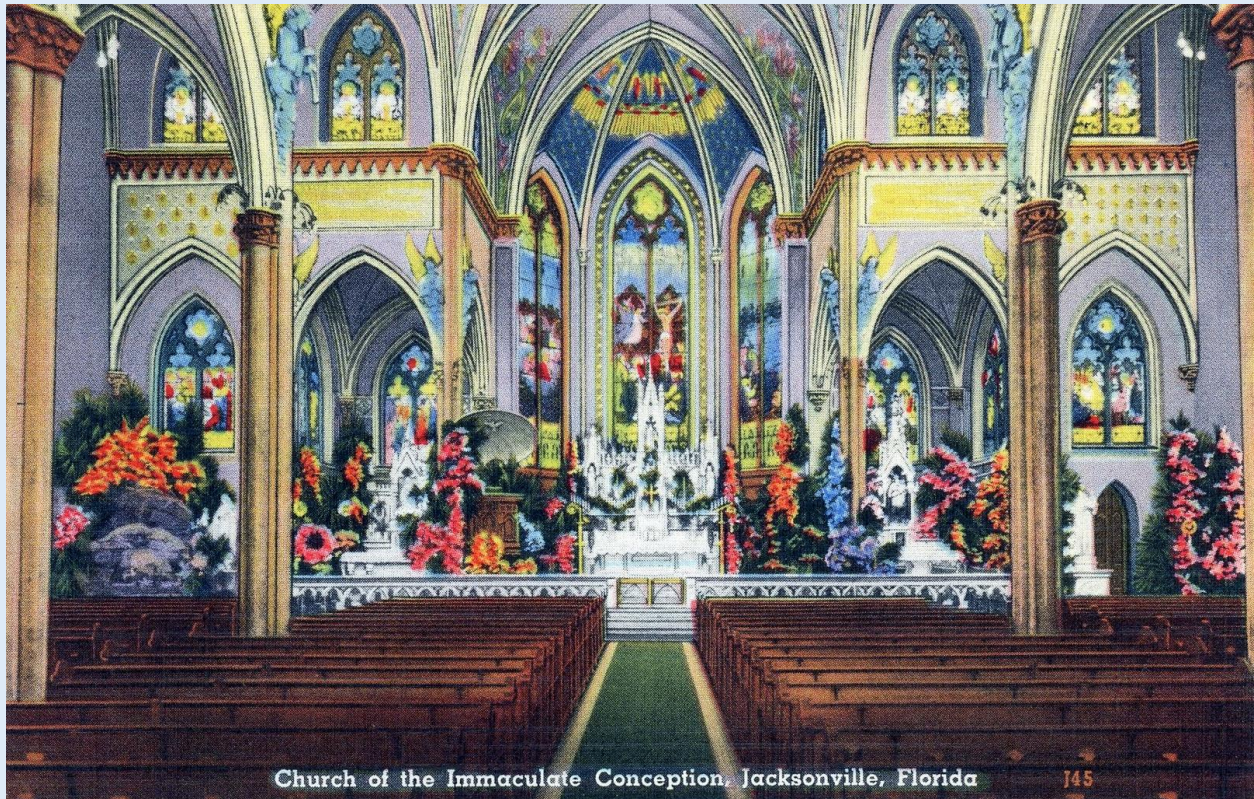
Adams Street, Looking East - Jacksonville, Fla. - ca. 1940s



Adeeb's Rancho Restaurant - Jacksonville, Fla. - ca. 1953



Capri Motel & Restaurant - Main Street at 38th - Jacksonville, Fla. - ca. 1958



Church of the Immaculate Conception (interior view) - Jacksonville, Fla. - ca. 1940s



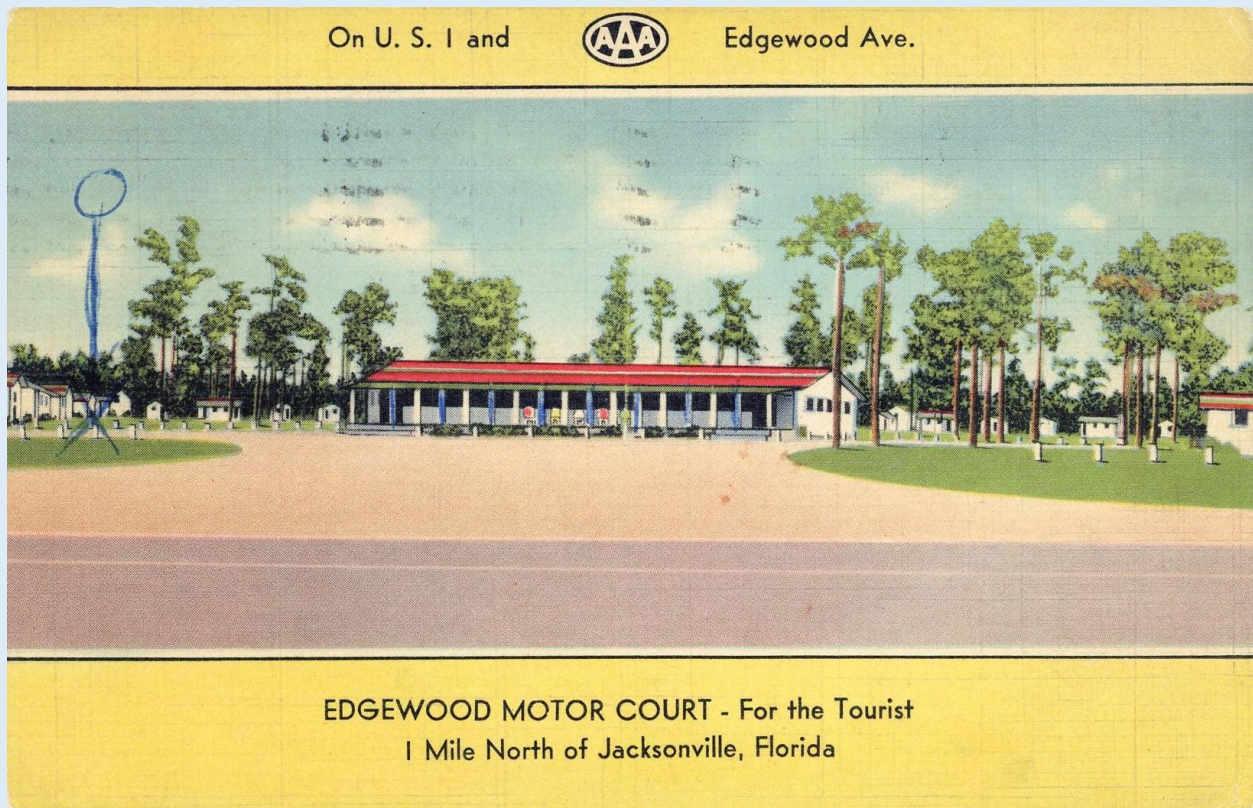
Confederate Park - Palm Trees - Jacksonville, Fla. - ca. 1960s



Coral Lodge - 3032 Kings Avenue - Jacksonville, Fla. - ca. 1956



Cummer Gallery of Art - Large circa 1735 Meissen Vase - Jacksonville, Fla. - ca. 1960s



Edgewood Motor Court - on U.S. 1 and Edgewood Ave. - Jacksonville, Fla. - ca. 1948



First Baptist Church - Jacksonville, Fla. - ca. 1940s



Fountain of Friendship - (70,000 gallons of water per minute) - Dallas Thomas Park and Marina - Jacksonville, Fla. - ca. 1966



Fountain of Friendship - (downtown background) - Dallas Thomas Park and Marina - Jacksonville, Fla. -
ca. 1960s



Fountain of Friendship - (night time view) - Dallas Thomas Park and Marina - Jacksonville, Fla. - ca. 1960s



Gateway to Florida - Greetings from Jacksonville, Fla. - ca. 1961

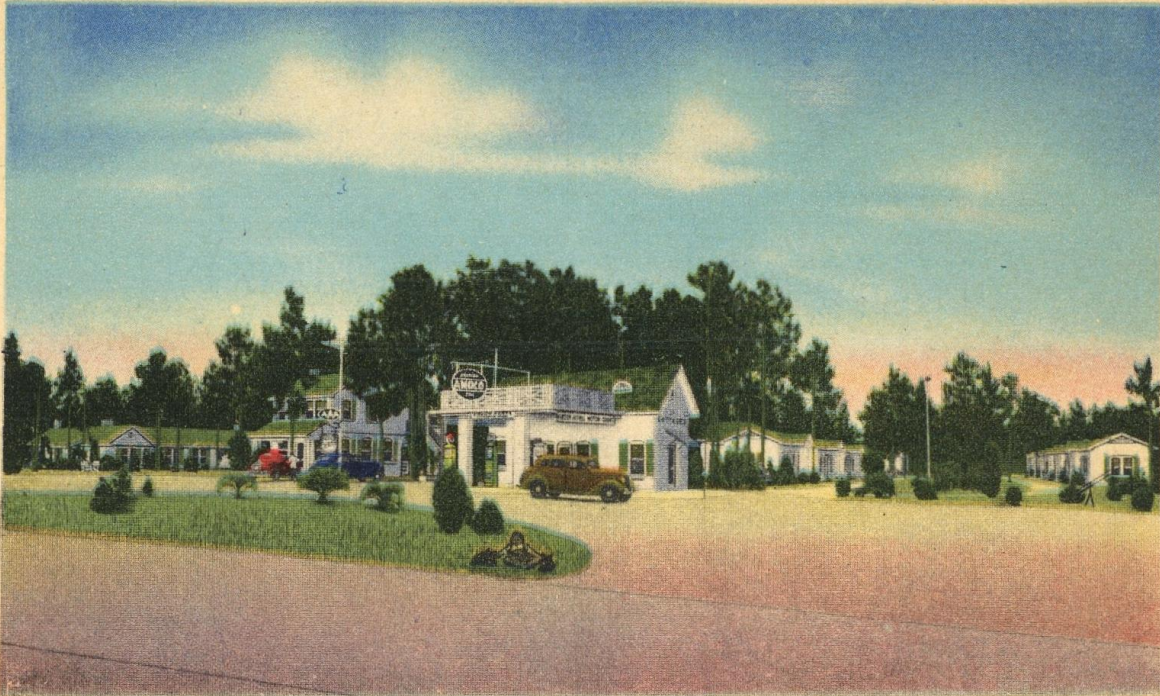


Glass House Restaurant - Serving Wonderful Food throughout the SE U.S. - Jacksonville, Fla. - ca. 1960s



Golden Sands Motor Lodge - Jacksonville, Fla. - ca. 1960s

GREEN ACRES MOTOR COURT, JACKSONVILLE, FLORIDA,



ON U. S. 1, JACKSONVILLE, AT EXACT SOUTH CITY LIMITS, 50 WHITE BRICK COTTAGES

Green Acres Motor Court - 50 White Brick Cottages - Jacksonville, Fla. - ca. 1930s



Hemming Park - (surrounded by landmark buildings) - Jacksonville, Fla. - ca. 1919



Horne Motor Lodge - Jacksonville, Fla. - ca. 1972



Hotel Burbridge - corner Forsyth and Clay Streets - Jacksonville, Fla. - ca. 1937



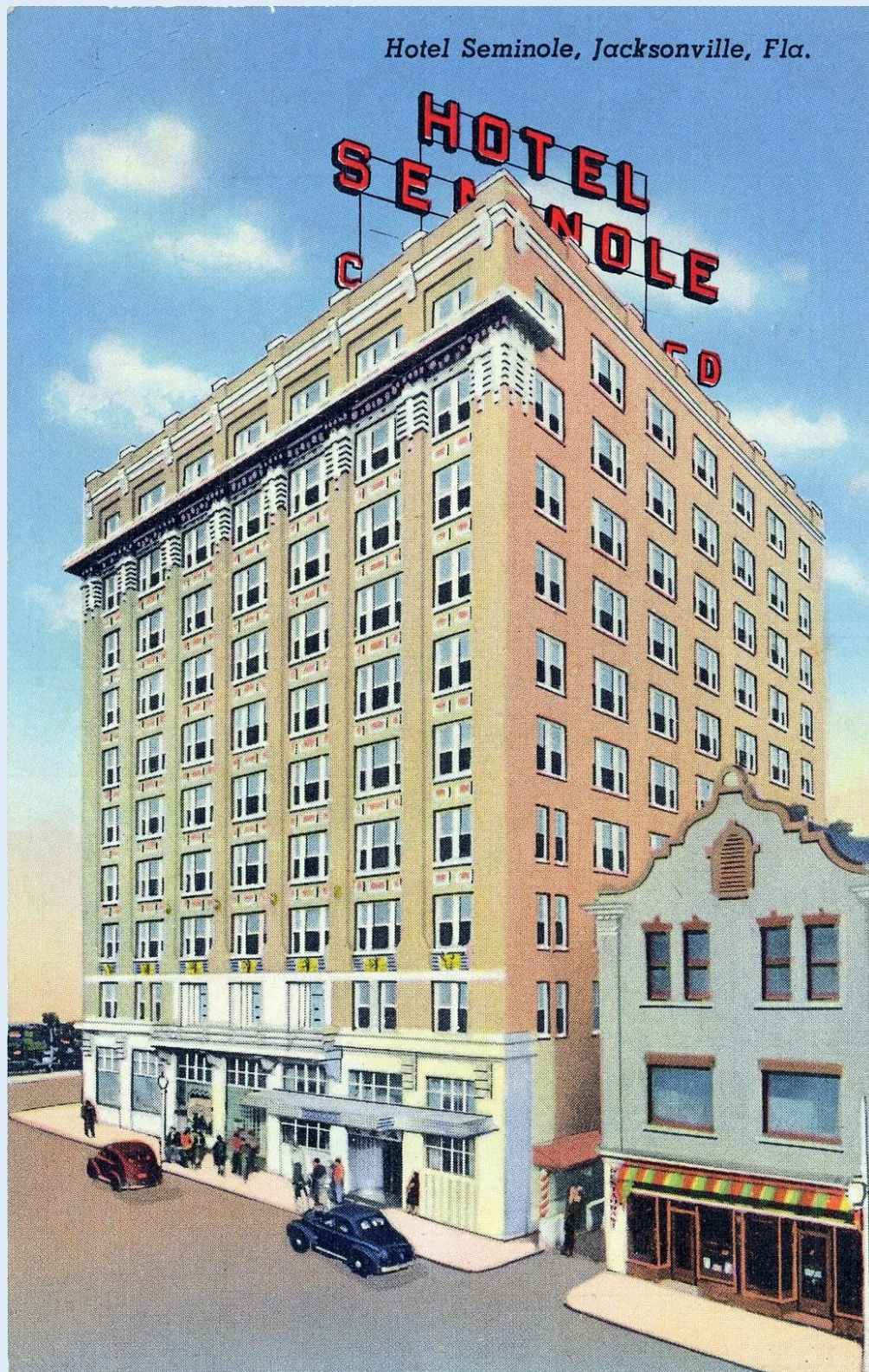
HOTEL FLAGLER, JACKSONVILLE, FLORIDA

Hotel Flagler - Jacksonville, Fla. - ca. 1920



HOTEL
*Robert
Meyer*
JACKSONVILLE
FLORIDA
NEW IN
'59

Hotel Robert Meyer - New in '59 - Jacksonville, Fla. - ca. 1961



Hotel Seminole - Jacksonville, Fla. - ca. 1940s



Hotel Seminole - Lamp Post Restaurant - Jacksonville, Fla. - ca. 1950s



Hotel Seminole - located in the heart of the city - Jacksonville, Fla. - ca. 1950s

Parlor



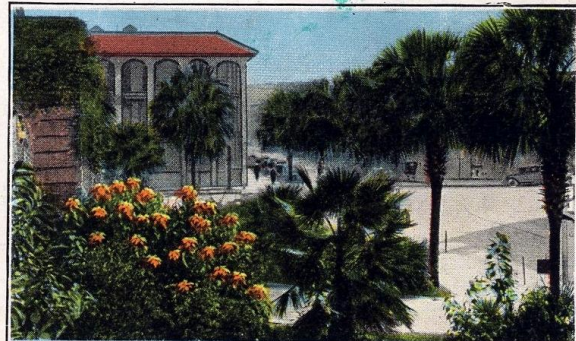
Restaurant



HOTEL WINDLE, JACKSONVILLE, FLORIDA.



Lobby

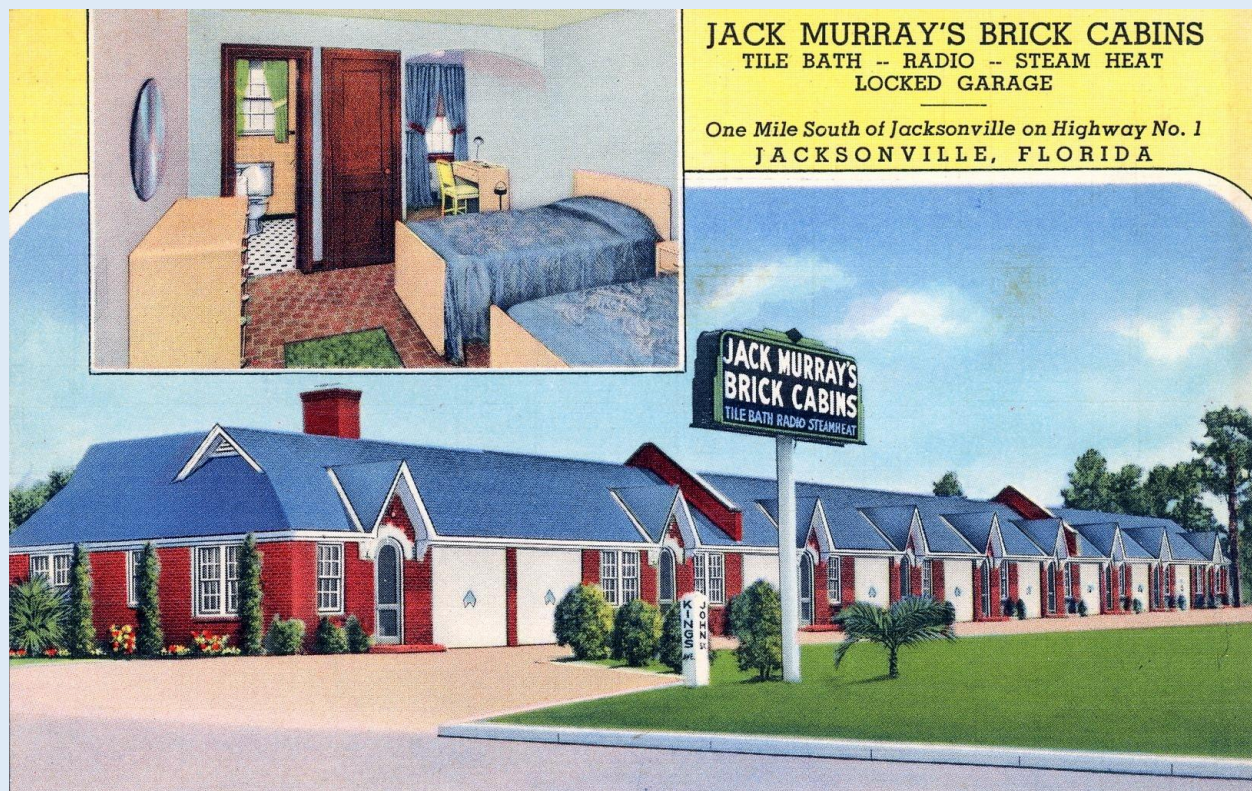


Park Scene.

Hotel Windle - Parlor, Restaurant, Lobby and Park Scene - Jacksonville, Fla. - ca. 1920s



Interior of Osky's Curio Store - 121 W. Bay Street - Jacksonville, Fla. - ca. 1915



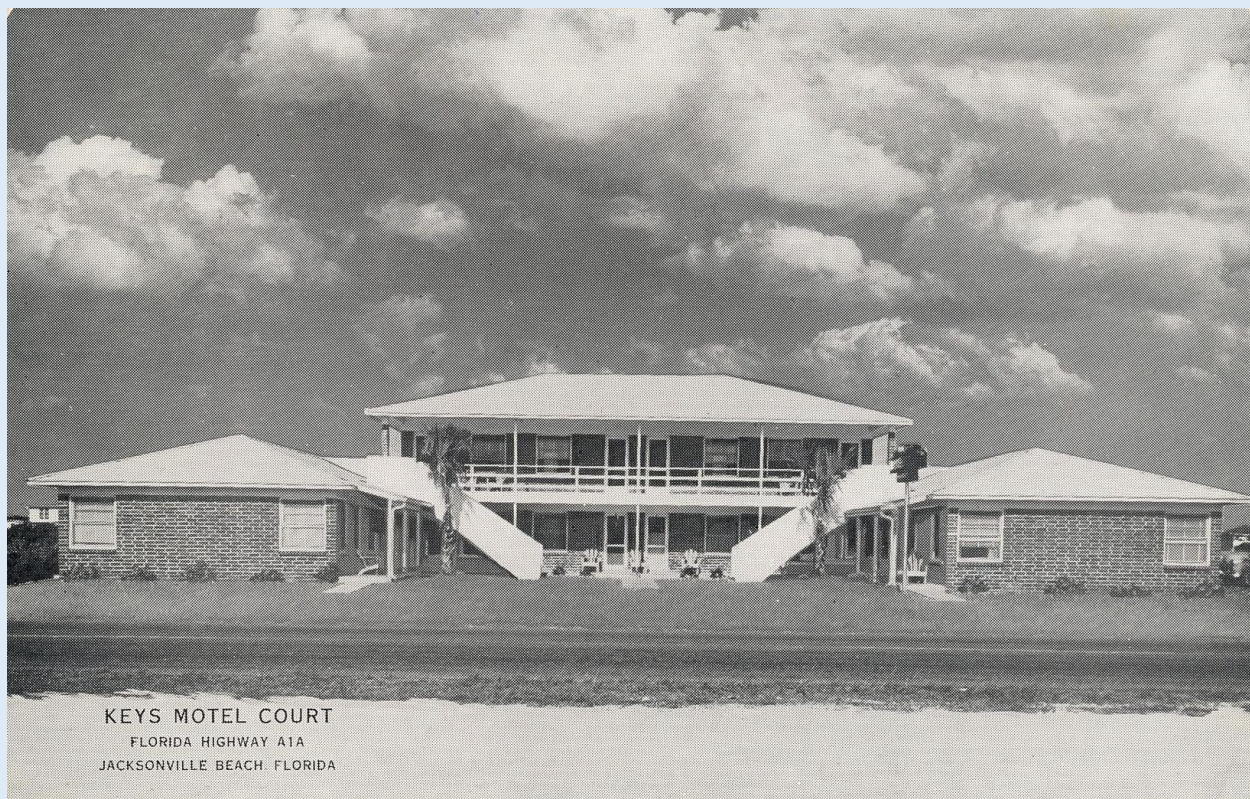
Jack Murray's Brick Cabins - Tile Bath, Radio & Steam Heat - Jacksonville, Fla. - ca. 1940s

Kodachrome by Charles Edquist



Jacksonville Terminal at Jacksonville, Fla. — 18-K-1

Jacksonville Terminal at Jacksonville, Fla. - ca. 1947



Keys Motel Court - Jacksonville, Fla. - ca. 1950s



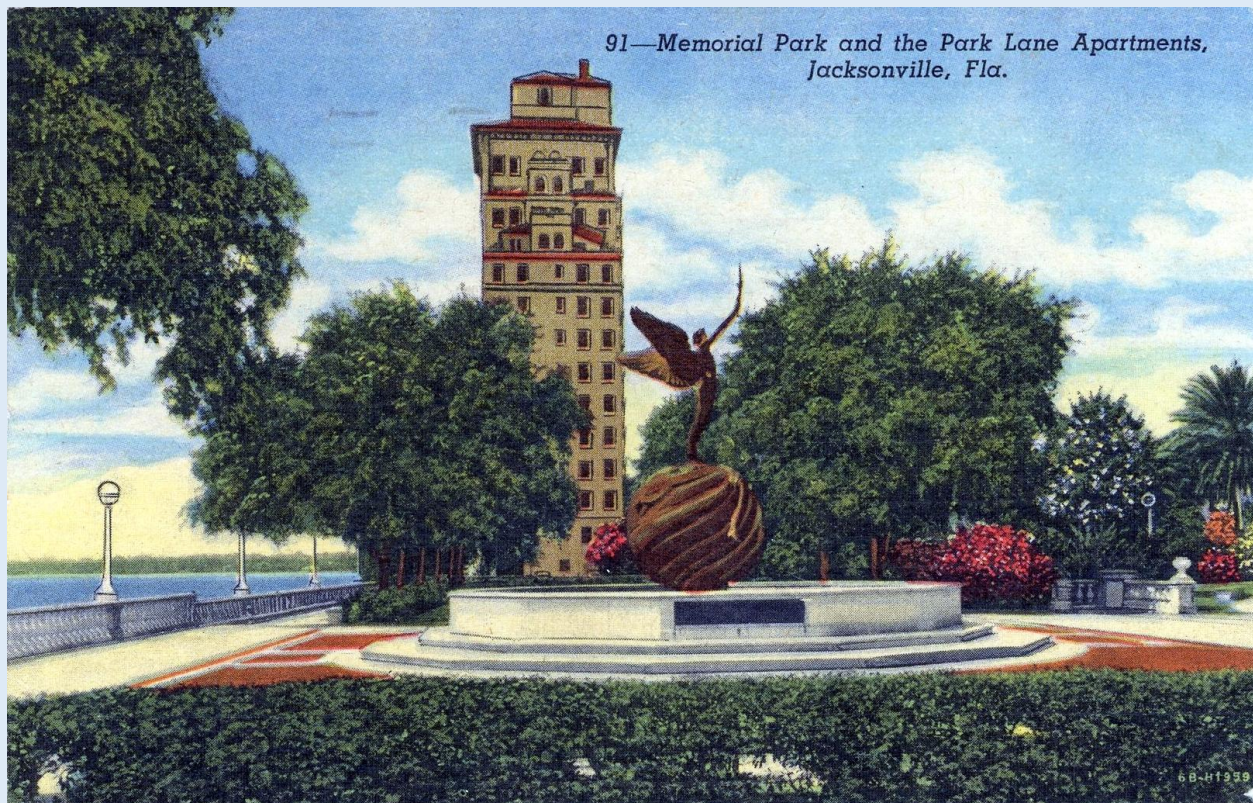
Kingsley House and Grounds - Jacksonville, Fla. - ca. 1970s



Looking South from the Guard Station - Jacksonville Beach, Fla. - ca. 1960s



Looking West on Adam Street from Main Street - Jacksonville, Fla. - ca. 1950s



Memorial Park and the Park Lane Apartments - Jacksonville, Fla. - ca. 1958



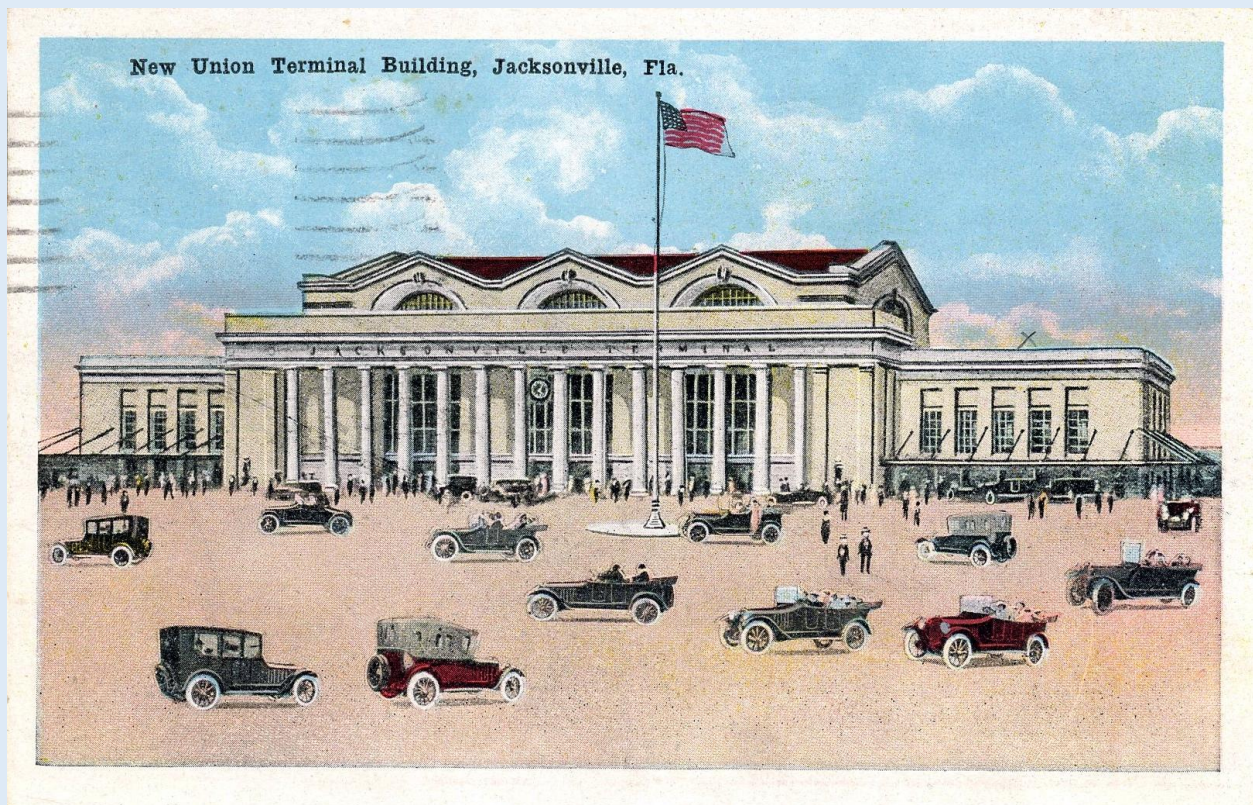
Moosehaven - Loyal Order of the Moose (Orange Park) - Jacksonville, Fla. - ca. 1940s



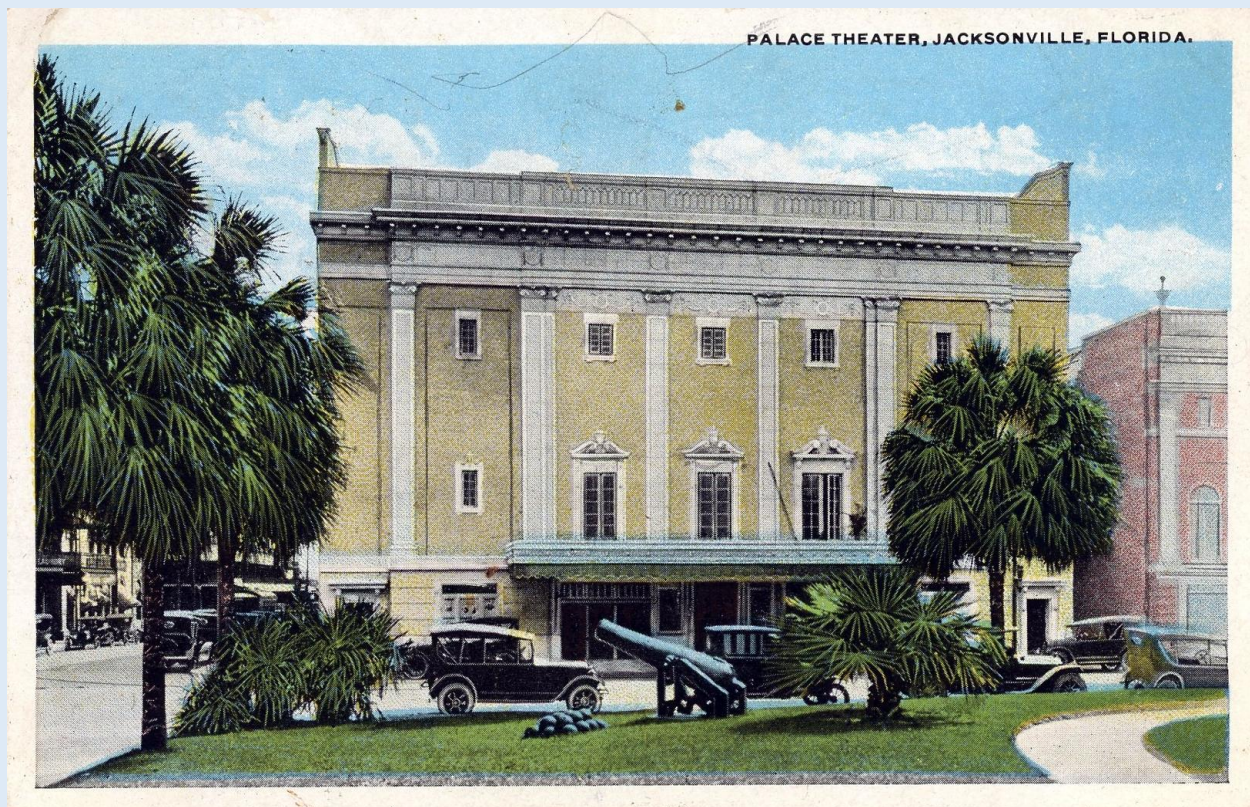
Motel Albert - Jacksonville, Fla. - ca. 1920s



Mt. Vernon Motor Lodge - Jacksonville, Fla. - ca. 1950s



New Union Terminal Building - Jacksonville, Fla. - ca. 1921



Palace Theater - Jacksonville, Fla. - ca. 1920

21—POST OFFICE AND FEDERAL BUILDING, JACKSONVILLE, FLA.



5A-H2199

Post Office and Federal Building - Jacksonville, Fla. - ca. 1940s



Red Carpet Inns of America - Jacksonville, Fla. - ca. 1960s

Riverside Avenue Blvd., Jacksonville, Fla.—30

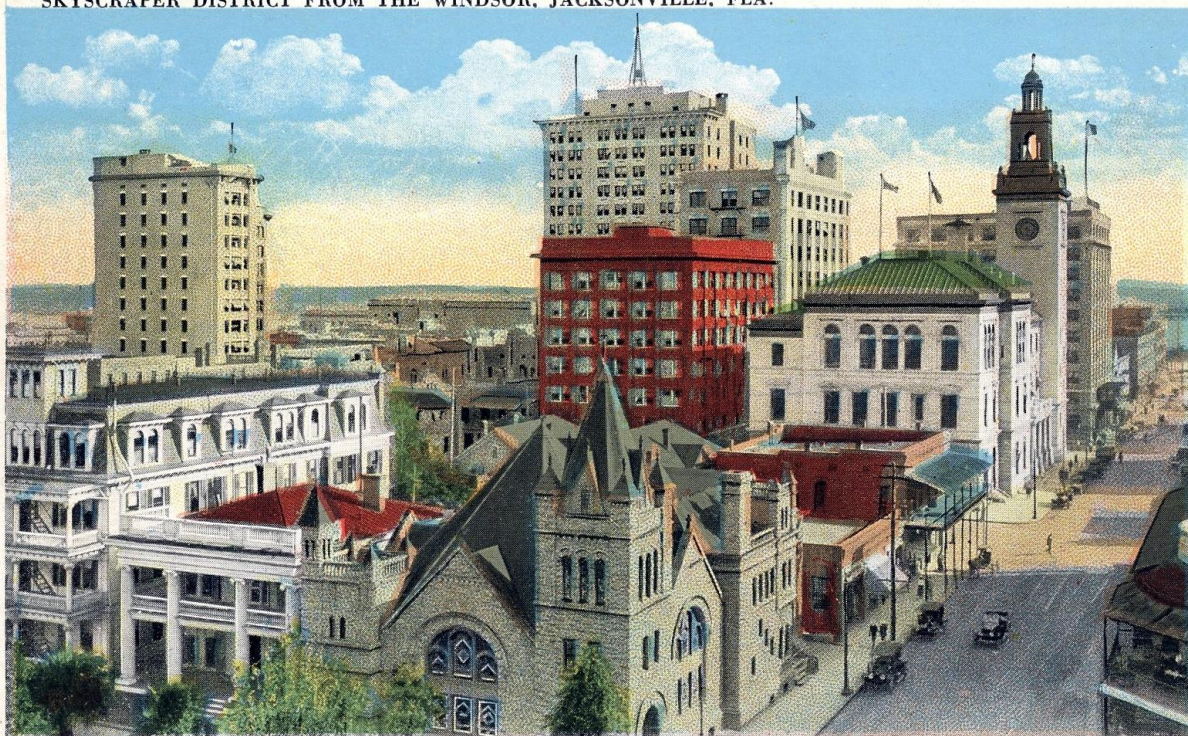


Riverside Avenue Blvd. - Jacksonville, Fla. - ca. 1920s



Rose Arbor - Confederate Park - Jacksonville, Fla. - ca. 1942

SKYSCRAPER DISTRICT FROM THE WINDSOR, JACKSONVILLE, FLA.



Skyscraper District from the Windsor - Jacksonville, Fla. - ca. 1915



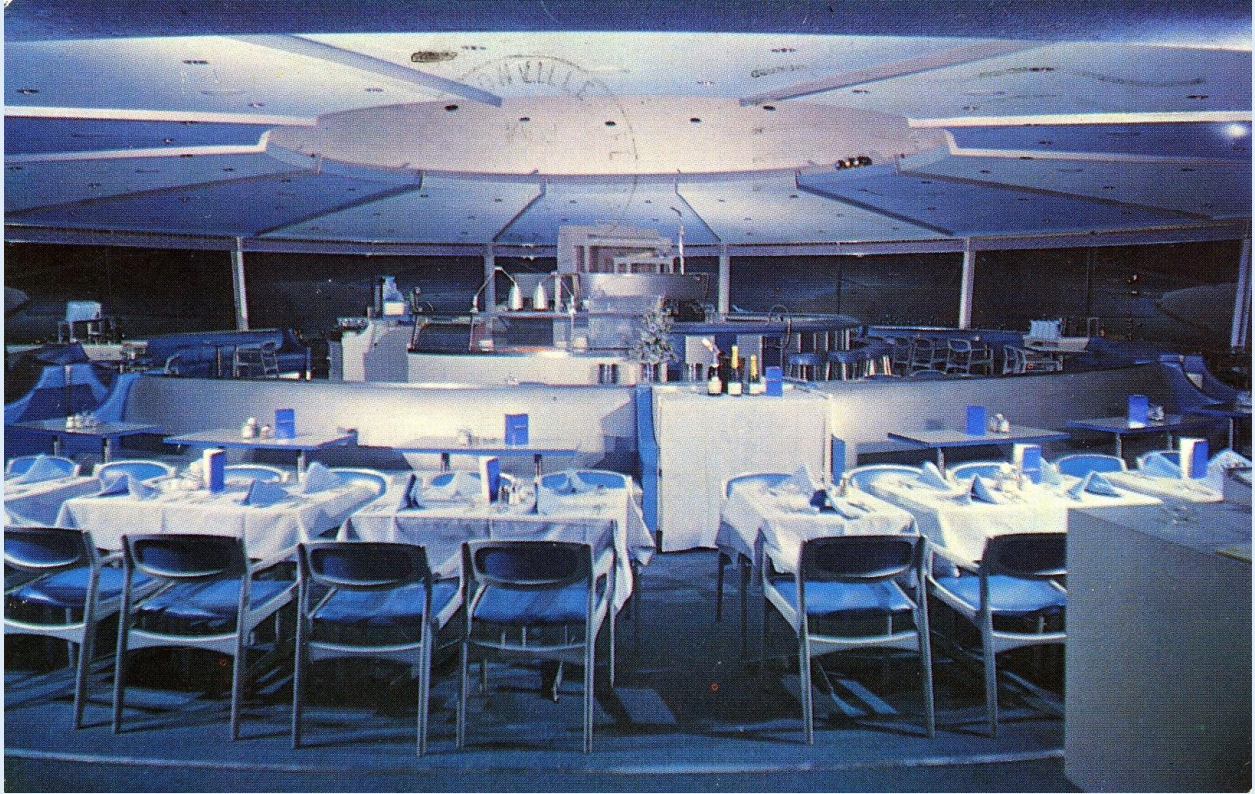
Springfield Park Boulevard - Jacksonville, Fla. - ca. 1909



St. James Building - Jacksonville, Fla. - ca. 1912



St. Johns River Park and Marina - Jacksonville, Fla. - ca. 1960s



The Embers Restaurant - World's Largest Revolving Restaurant - Jacksonville, Fla. - ca. 1969



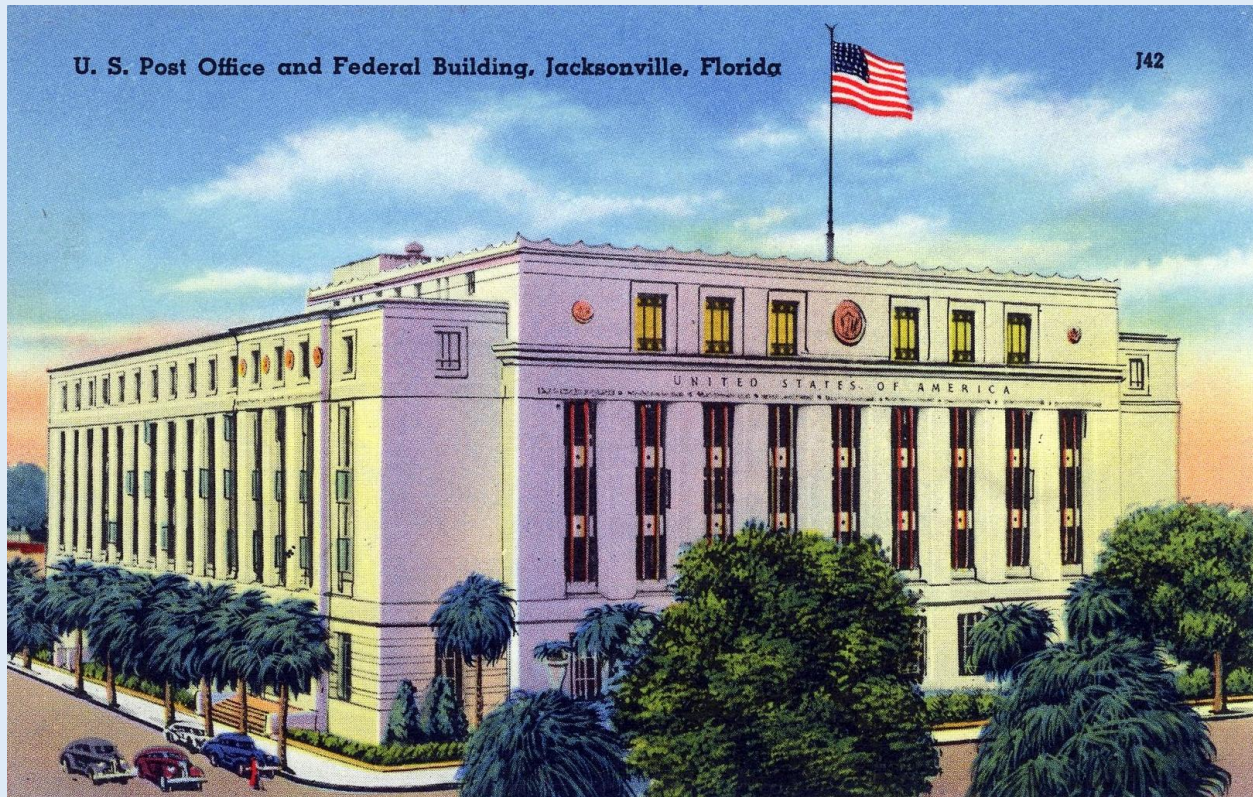
*The Fishing
is Fine at*

JACKSONVILLE BEACH, FLA.

The Fishing is Fine at Jacksonville Beach, Fla. - ca. 1970s



The Lake, Springfield Park - Jacksonville, Fla. - ca. 1912



U.S. Post Office and Federal Building - Jacksonville, Fla. - ca. 1940s

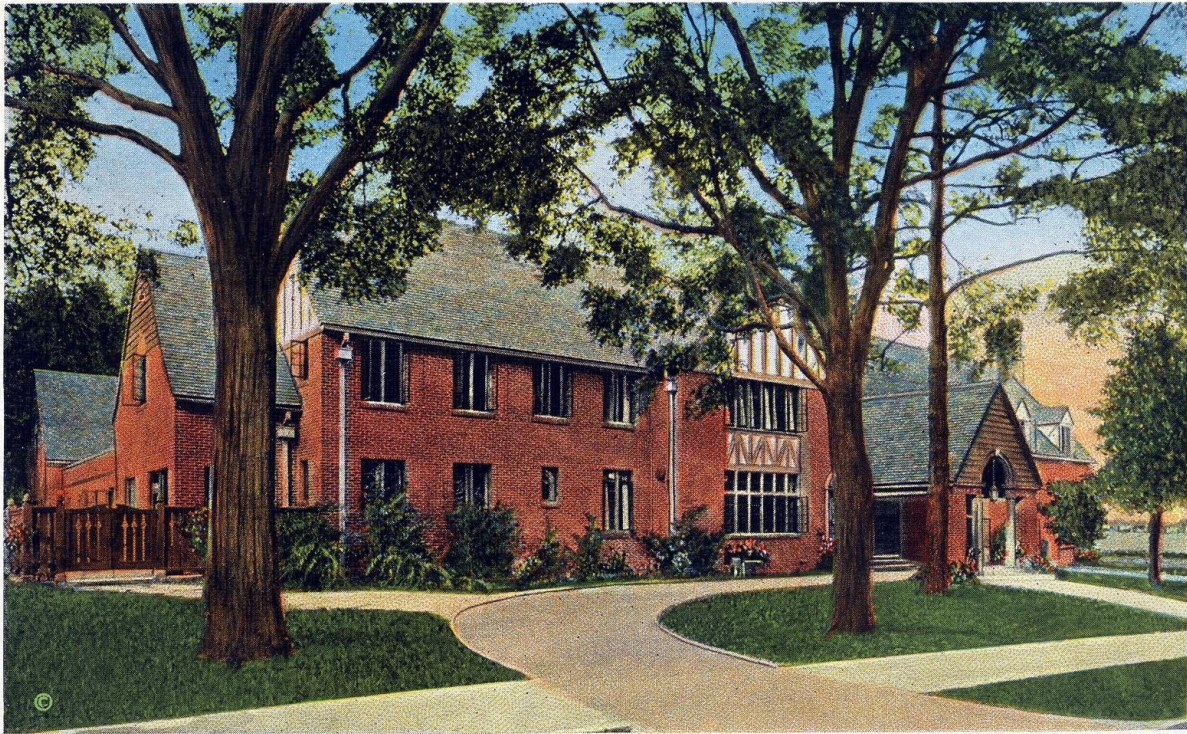


Universal Marion Building - Jacksonville, Fla. - ca. 1960s



Western Auto - Jacksonville, Fla. - ca. 1950s

WOMEN'S CLUB, JACKSONVILLE, FLORIDA



Women's Club - Jacksonville, Fla. - ca. 1930s



5A-H2197

World War Memorial, Memorial Park - Jacksonville, Fla. - ca. 1940s



You'll Enjoy Jacksonville, Fla. - ca. 1946