

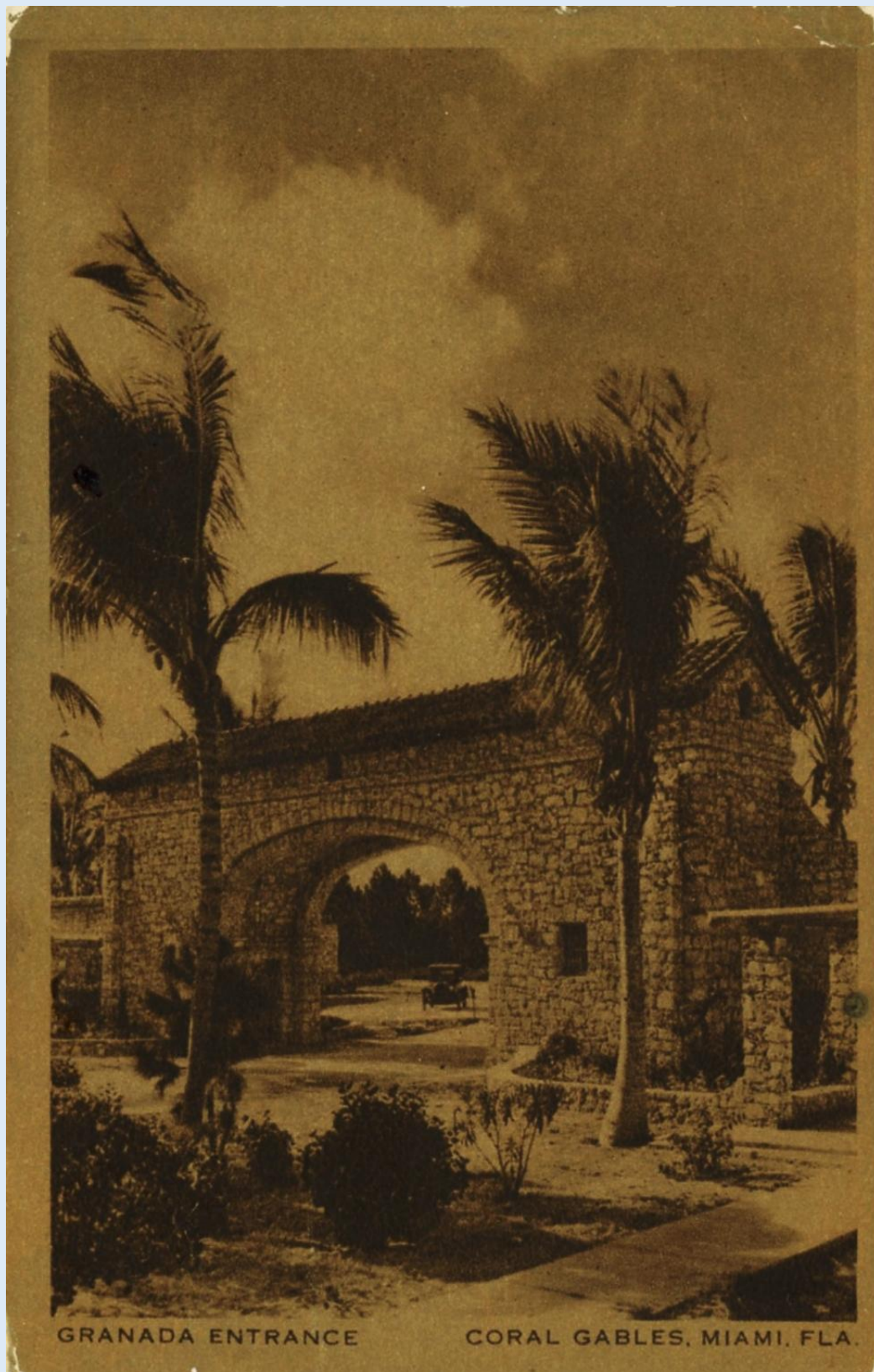


Alhambra Entrance to Coral Gables, Fla. - ca. 1939



Ash Memorial Building, University of Miami - Coral Gables, Fla. - ca. 1960



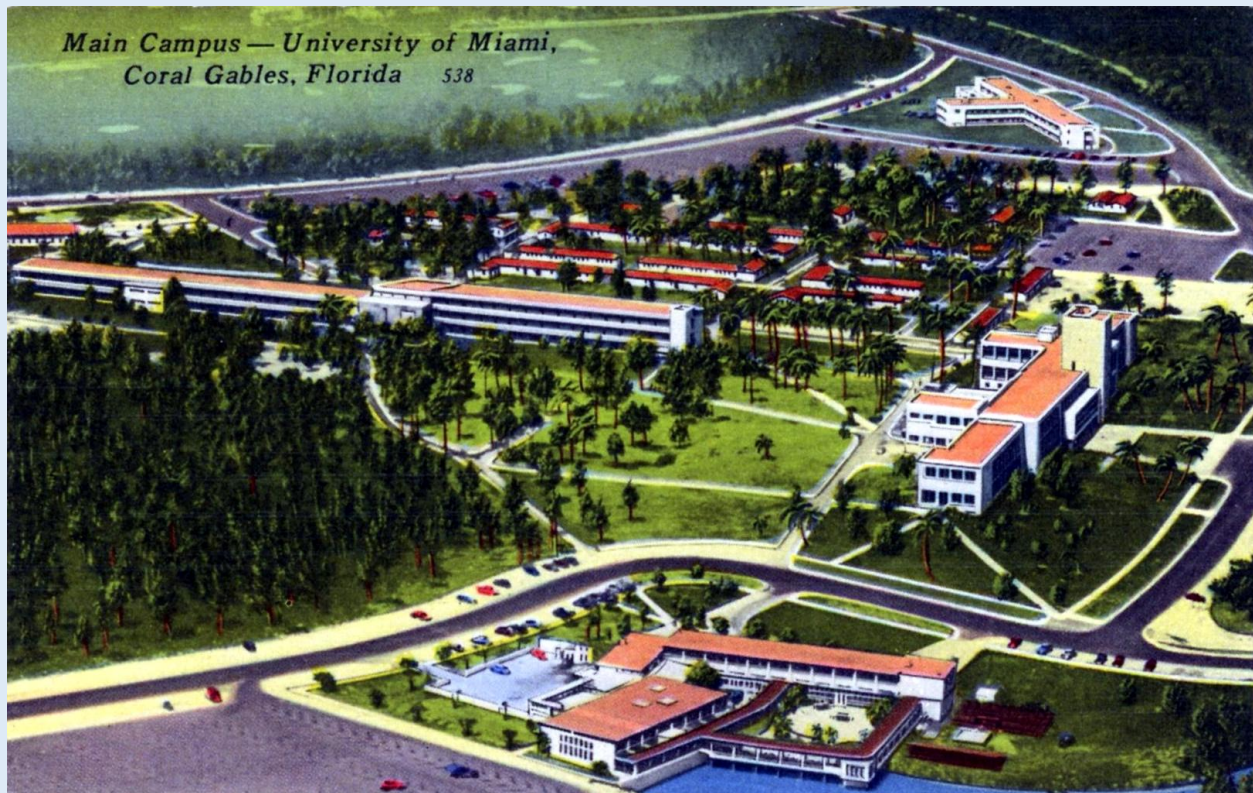


Granada Entrance - Coral Gables - Miami, Fla. (America's Finest Suburb) - ca. 1947



Hotel La Palma - 116 Alhambra Circle - Coral Gables, Fla. - ca. 1960s





Main Camus- University of Miami - Coral Gables, Fla. - ca. 1956



Memorial Classroom Building, Univ. of Miami - Coral Gables, Fla. - ca. 1957



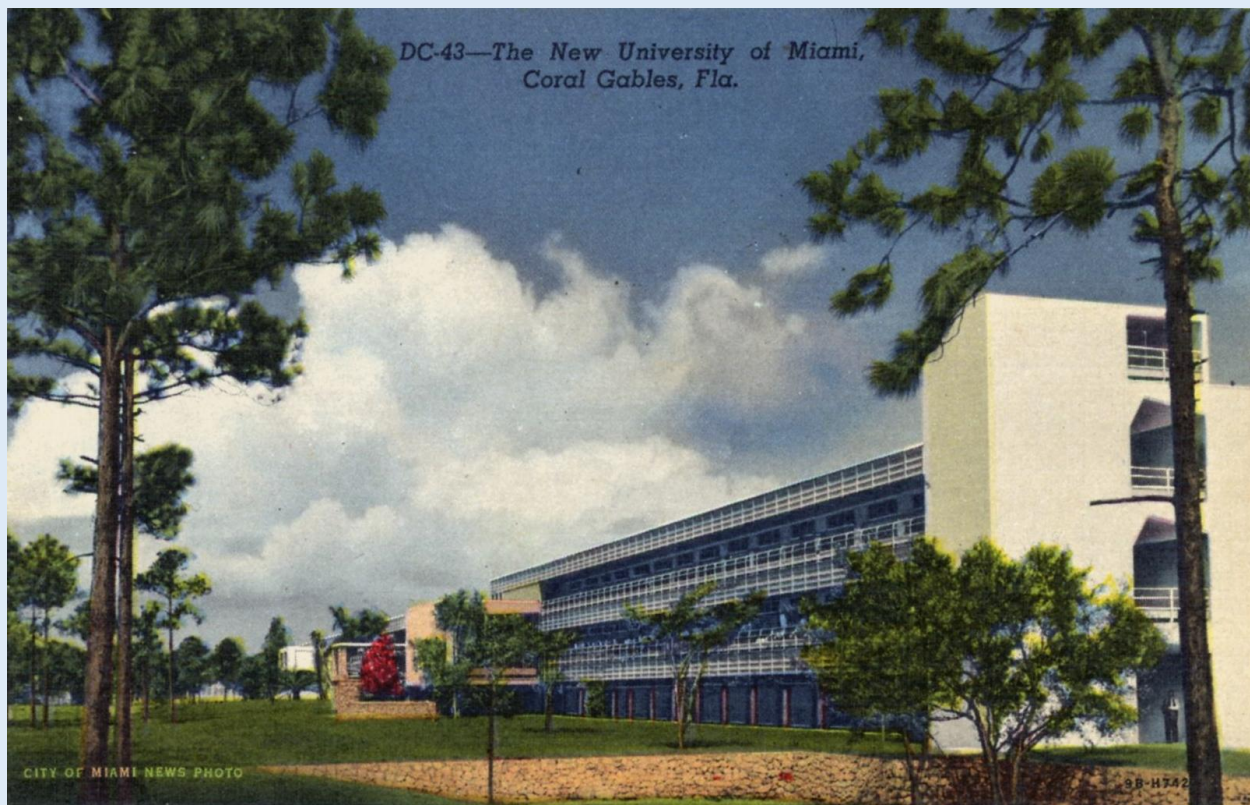


Miami Biltmore Hotel, as seen from Columbia Blvd., Coral Gables, Fla. - ca. 1940s.



One of the Beautiful Residences of Coral Gables, Fla. - ca. 1950s





The New University of Miami - Coral Gables, Fla. - ca. 1957



The New University of Miami (Walkway) - Coral Gables, Fla. - ca. 1956



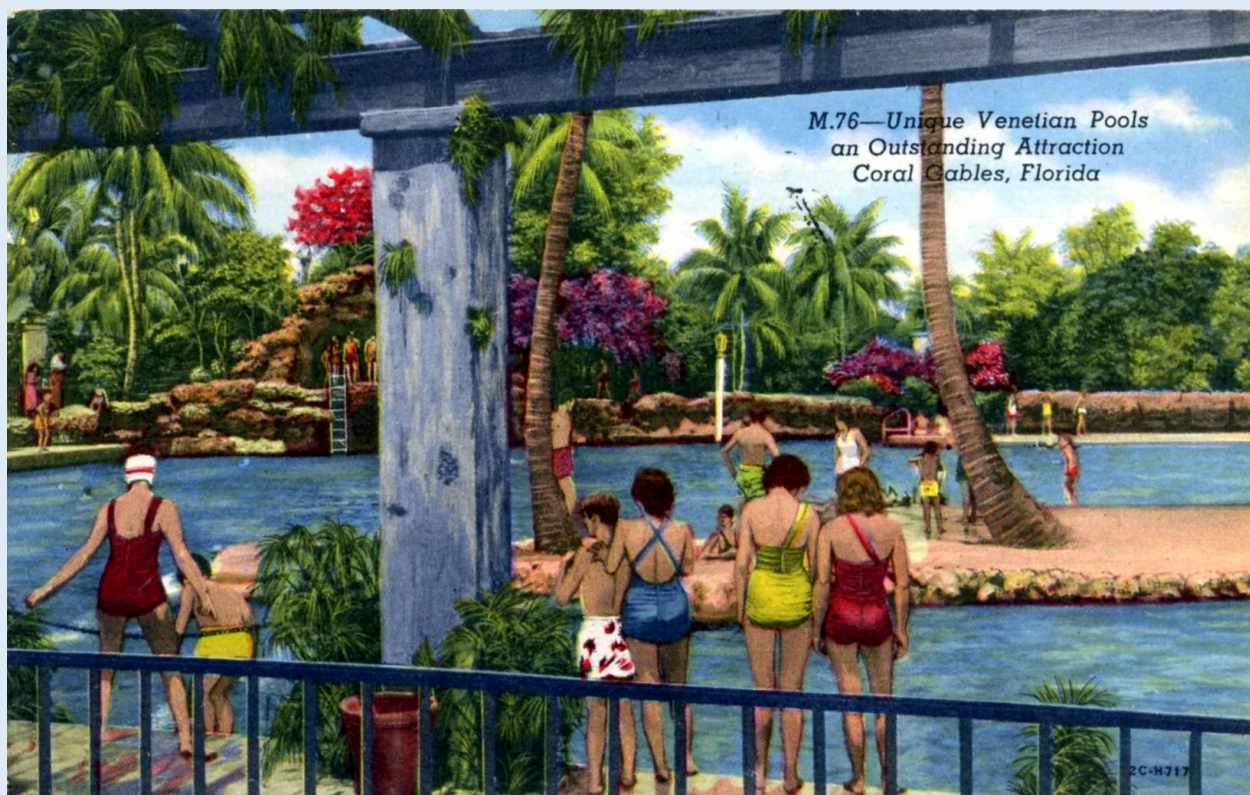


The Venetian Pool, Coral Gables, Fla. - ca. 1962



Tyler's Restaurant - Coral Gables, Fla. - ca. 1968





Unique Venetian Pools, an Outstanding Attraction - Coral Gables, Fla. - ca. 1957



Venetian Pool - Coral Gables, Fla. - ca. 1940s





Venetian Pools - Coral Gables, Fla. - ca. 1970s