



A Breath of Old Spain in Florida - Daytona Beach, Fla. - ca. 1941





Beach Street (Commercial Business District) - Daytona Beach, Fla. - ca. 1930s



Beach Street Business District - (Buses at a Stop) - Daytona Beach, Fla. - ca. 1940s



*Beach Street Business District, Daytona Beach, Florida*

102 N



Beach Street Business District - Daytona Beach, Fla. - ca. 1940s



Beach Street Facing Waterfront Park - Daytona Beach, Fla. - ca. 1970





Beach Street from Beautiful Waterfront Park - Daytona Beach, Fla. - ca. 1957



Beach Street Looking North - Daytona Beach, Fla. - ca. 1929





C.K. Slaughter - 206 South Beach Street - Daytona Beach, Fla. - ca. 1950s





Floral Vista in Tropical Waterfront Park - Daytona Beach, Fla. - ca. 1944

LILLIAN G. DANA MEMORIAL FOUNTAIN, RIVERFRONT PARK, DAYTONA BEACH, FLORIDA—110



Lillian G. Dana Memorial Fountain - Riverfront Park - Daytona Beach, Fla. - ca. 1940s





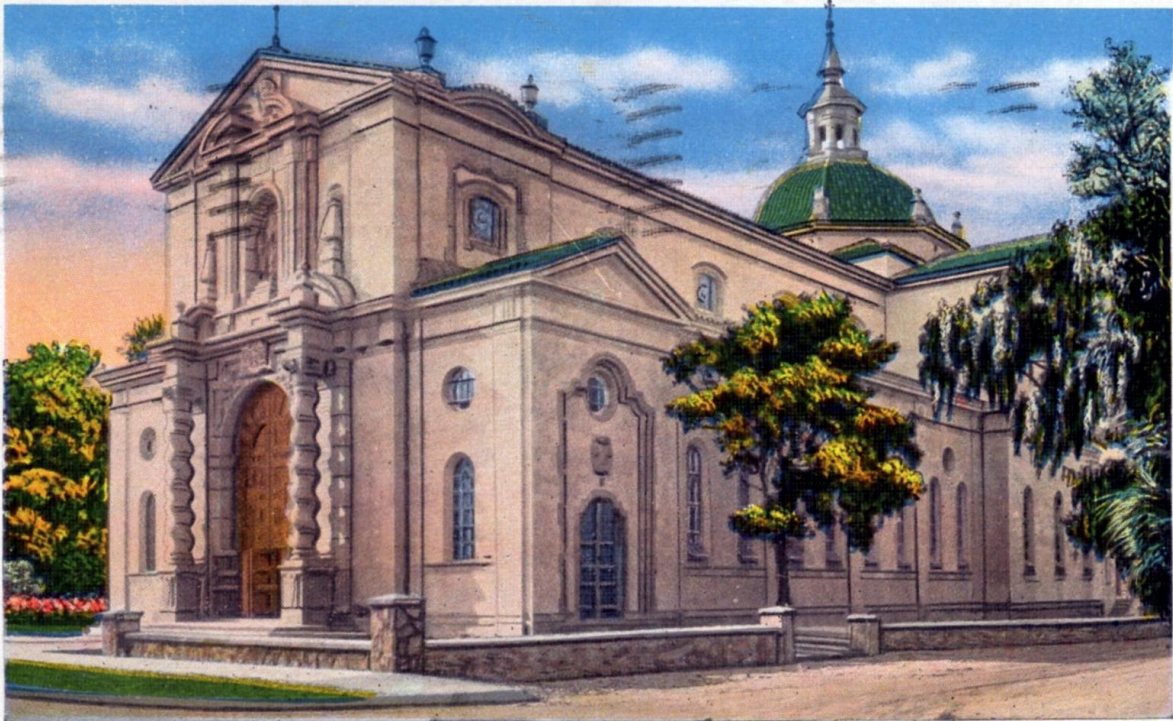
Main Street Bridge - Gateway to the World's Most Famous Beach - Daytona Beach, Fla. - 1950s



Riverfront Park - Daytona Beach, Fla. - ca. 1944



ST. PAUL'S CATHOLIC CHURCH, DAYTONA BEACH, FLORIDA—13



CONFIRMATION — To-DAY

St. Paul's Catholic Church - Daytona Beach, Fla. - ca. 1936

D.65. TARRAGONA TOWER, MEDIEVAL ENTRANCE TO DAYTONA HIGHLANDS, DAYTONA BEACH, FLORIDA.



"FLORIDA'S SUBURB OF HILLS AND LAKES".

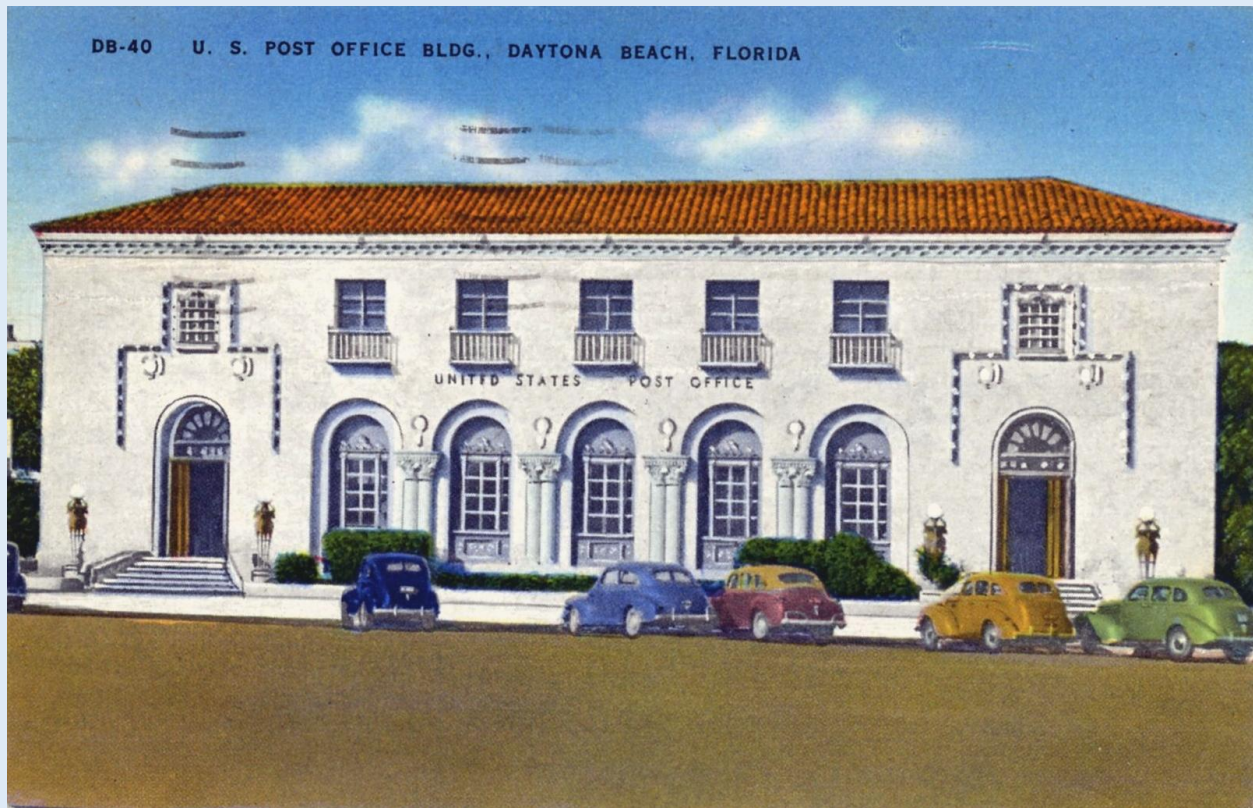
105593

Terragona Tower - Medieval Entrance to Daytona Highlands - Daytona Beach, Fla. - ca. 1926





The Downtown Yacht Basin and Ball Park - Daytona Beach, Fla. - ca. 1971



U.S. Post Office Bldg., Daytona Beach, Fla. - ca. 1948





View of Beach St. and Waterfront - Daytona, Fla. - ca. 1915