



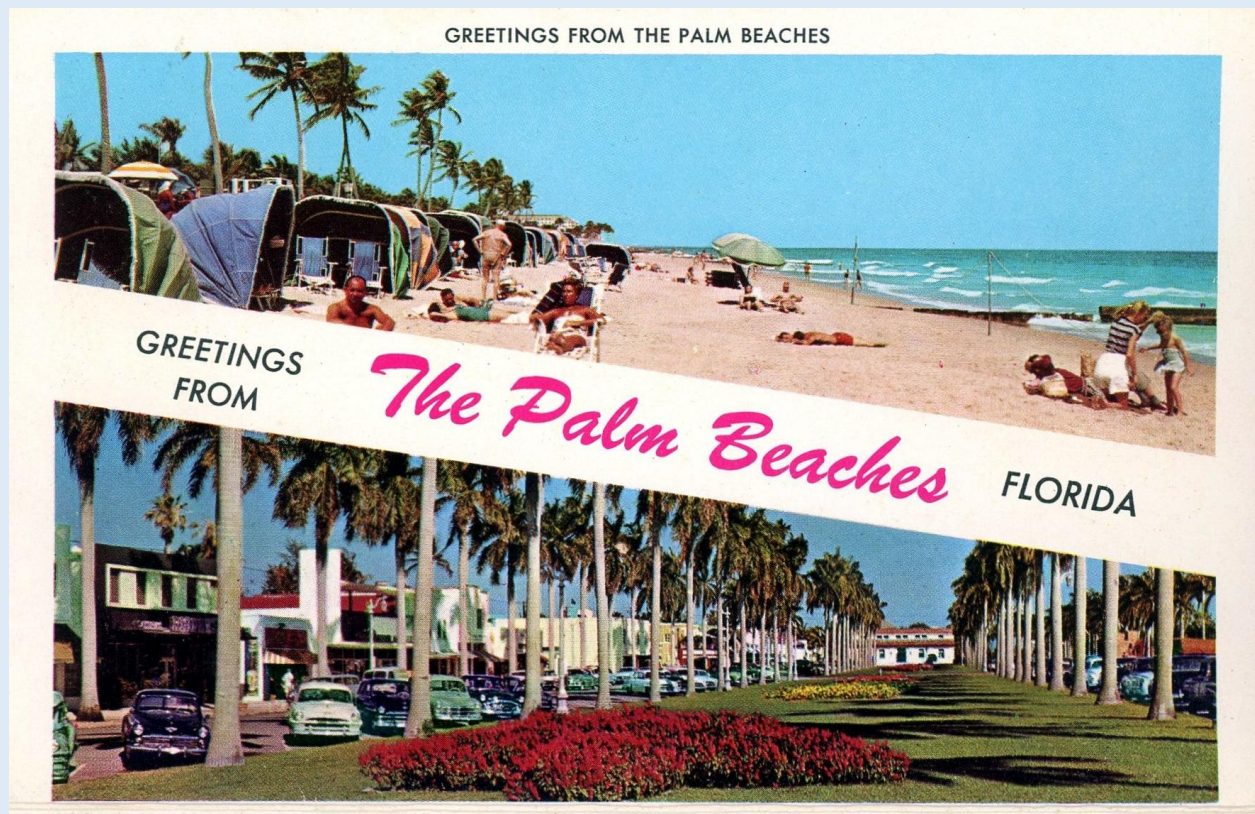
Palm Beaches, Fla. - Cover (The Palm Beaches) - ca. 1970s



FLAGLER DRIVE — WEST PALM BEACH

Flagler Drive - West Palm Beach (The Palm Beaches) - ca. 1970s





Greetings from the Palm Beaches (The Palm Beaches) - ca. 1950s

HOTEL ROW — PALM BEACH



Hotel Row - Palm Beach (The Palm Beaches) - ca. 1970s



LION COUNTRY SAFARI, WEST PALM BEACH



Lion Country Safari - West Palm Beach (The Palm Beaches) - ca. 1970s



Palm Beach - On The Blue Atlantic (The Palm Beaches) - ca. 1970s





PALM BEACH TOWERS

Palm Beach Towers (The Palm Beaches) - ca. 1970s



PGA NATIONAL GOLF CLUB, PALM BEACH GARDENS

PGA National Golf Club - Palm Beach Gardens (The Palm Beaches) - ca. 1970s



ROYAL PALM WAY, PALM BEACH



Royal Palm Way - Palm Beach (The Palm Beaches) - ca. 1960s



ROYAL PALM WAY — PALM BEACH

Royal Palm Way - Palm Beach (The Palm Beaches) - ca. 1970s



ROYAL POINCIANA PLAY HOUSE — PALM BEACH



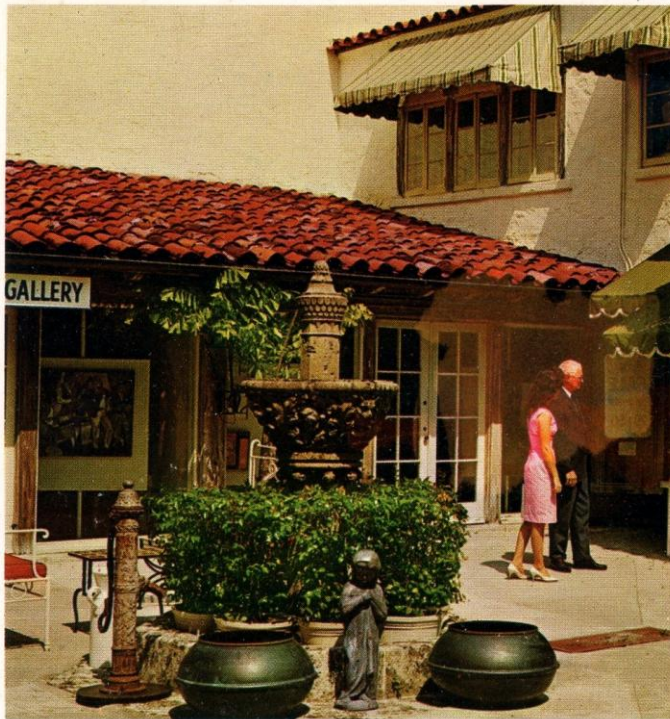
Royal Poinciana Play House - Palm Beach (The Palm Beaches) - ca. 1970s



WELLS ROAD, PALM BEACH

Wells Road - Palm Beach (The Palm Beaches) - ca. 1950s





WORTH AVENUE — PALM BEACH

Worth Avenue – Palm Beach (The Palm Beaches) - ca. 1970s

## *The Palm Beaches*

Tropical Florida's first resort, winter playground of the world, Mecca for tourists from the four points of the globe.

Enjoying the warmth of the Gulf Stream, vacationists bask on its many beaches and are surrounded by a wealth of tropical flowers and growth.

Its many hotels and motels provide easy access to comfort and relaxing pleasure.

Palm Beach and West Palm Beach situated on the waters of Lake Worth, bid you welcome.

P. S. Having a perfect vacation beneath tropical skies, wish you were here.