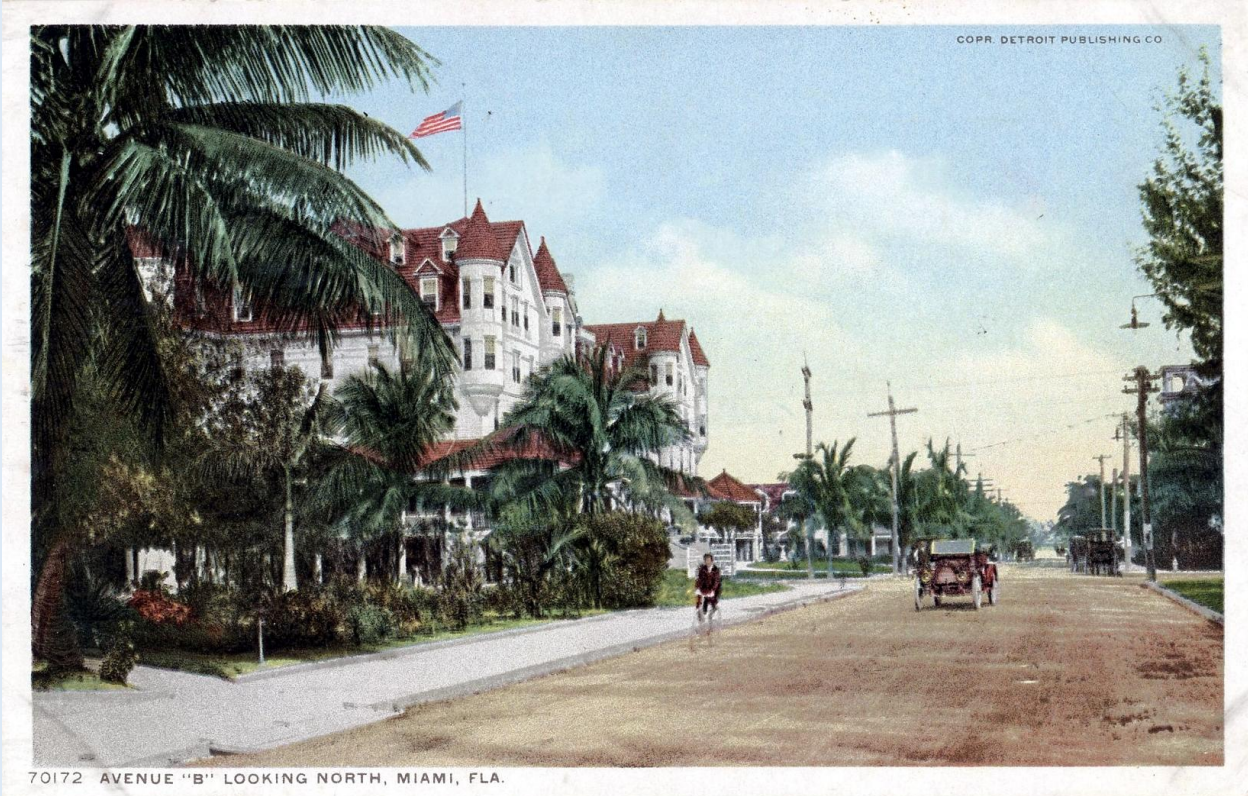




A Royal Palm Drive - Miami, Fla. - ca. 1940s.

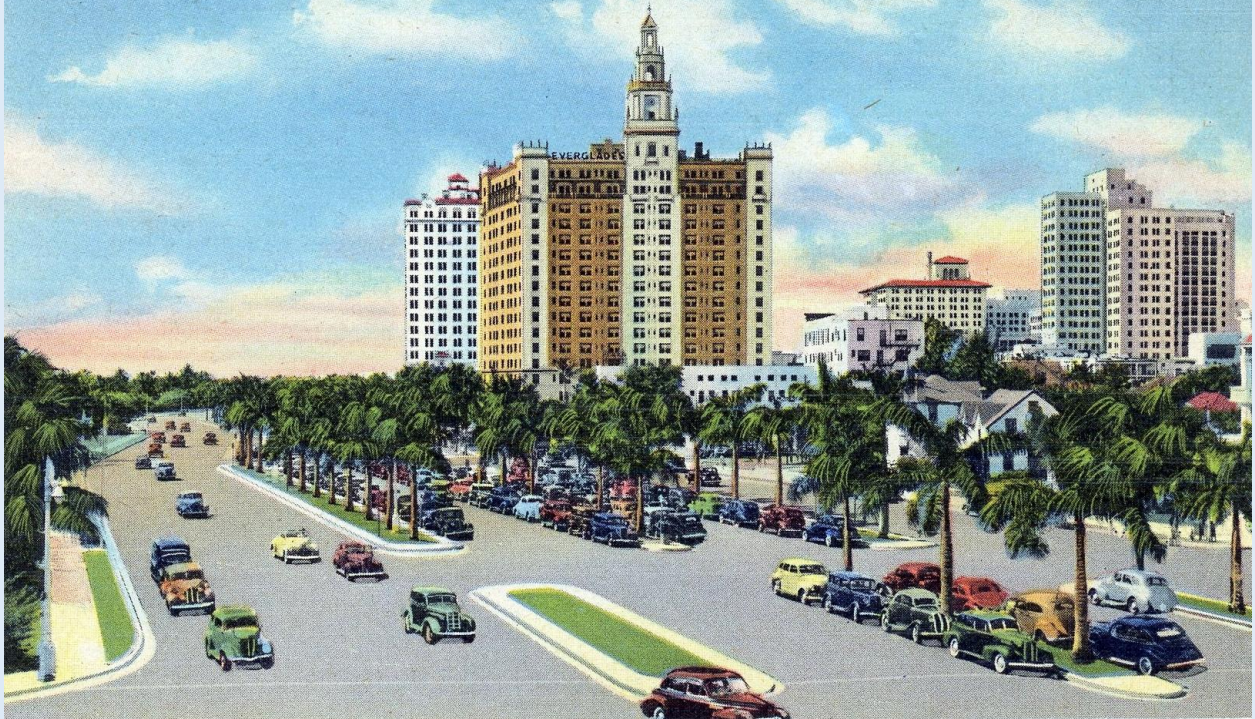


Avenue 'B' Looking North - Miami, Fla. - ca. 1920s.



Biscayne Boulevard - Picture of Extreme Beauty - Miami, Fla. - ca. 1940s.

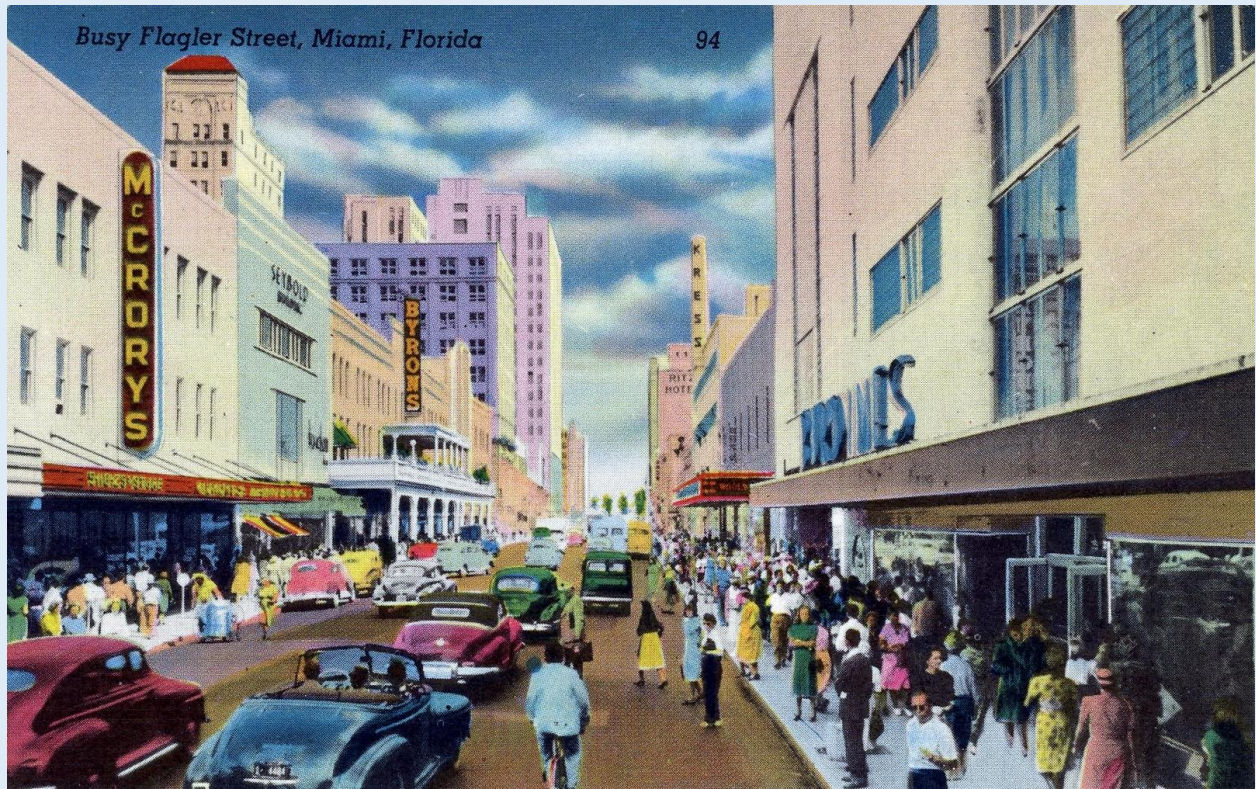
*D. C. 149—Biscayne Blvd. South from 5th Street,  
Miami, Fla.*



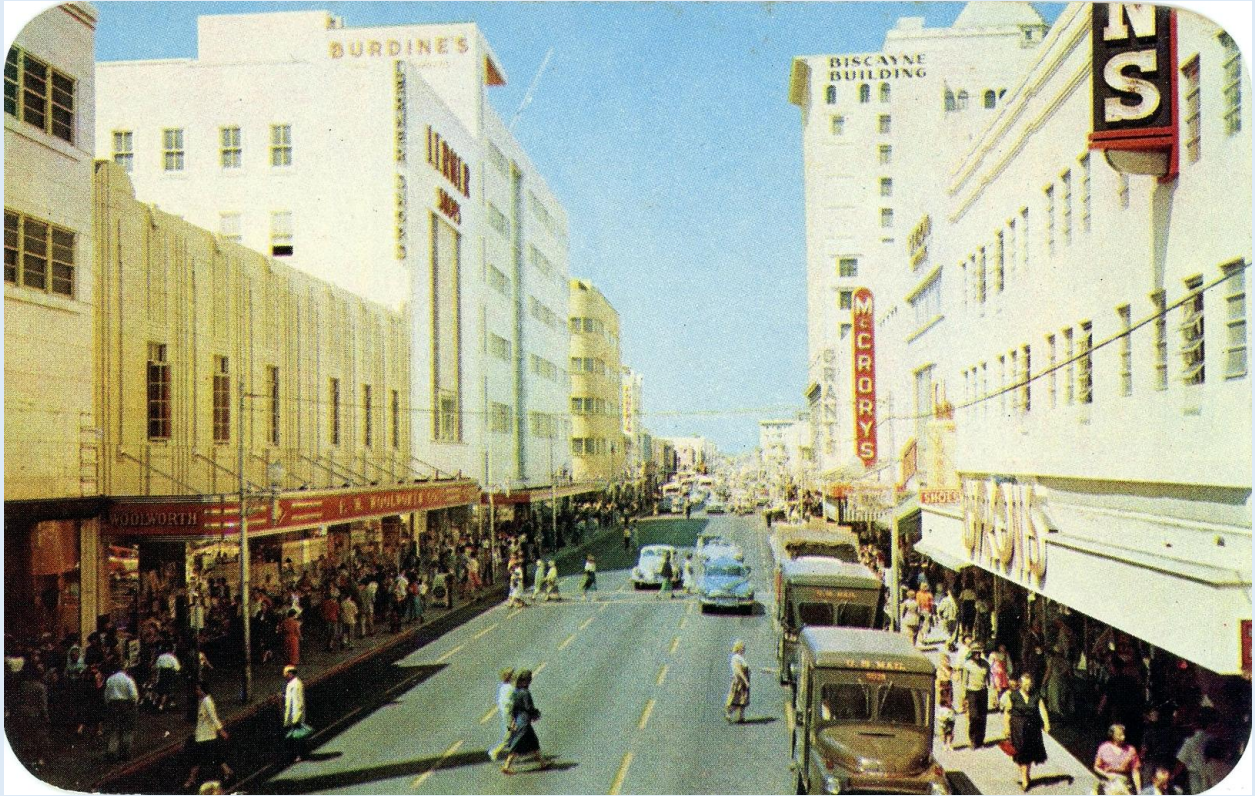
Biscayne Boulevard - South from 5th Street - Miami, Fla. - ca. 1940s.



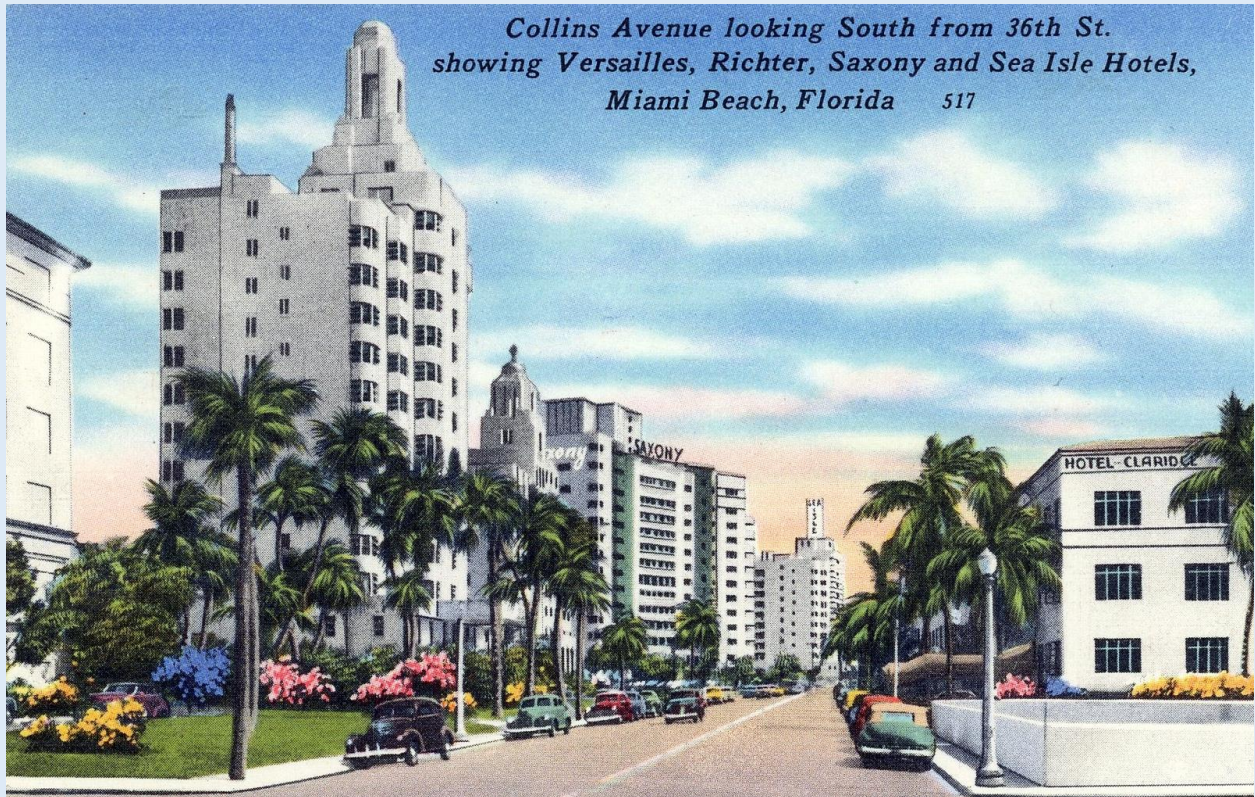
Biscayne Boulevard from Air - Miami, Fla. - ca. 1940s.



Busy Flagler Street - downtown shopping area - Miami, Fla. - ca. 1940s.



Busy Flagler Street - the hug of Metropolitan Miami, Fla. - ca. 1940s.



Collins Avenue looking South from 36th Street - Miami Beach, Fla. - ca. 1940s.



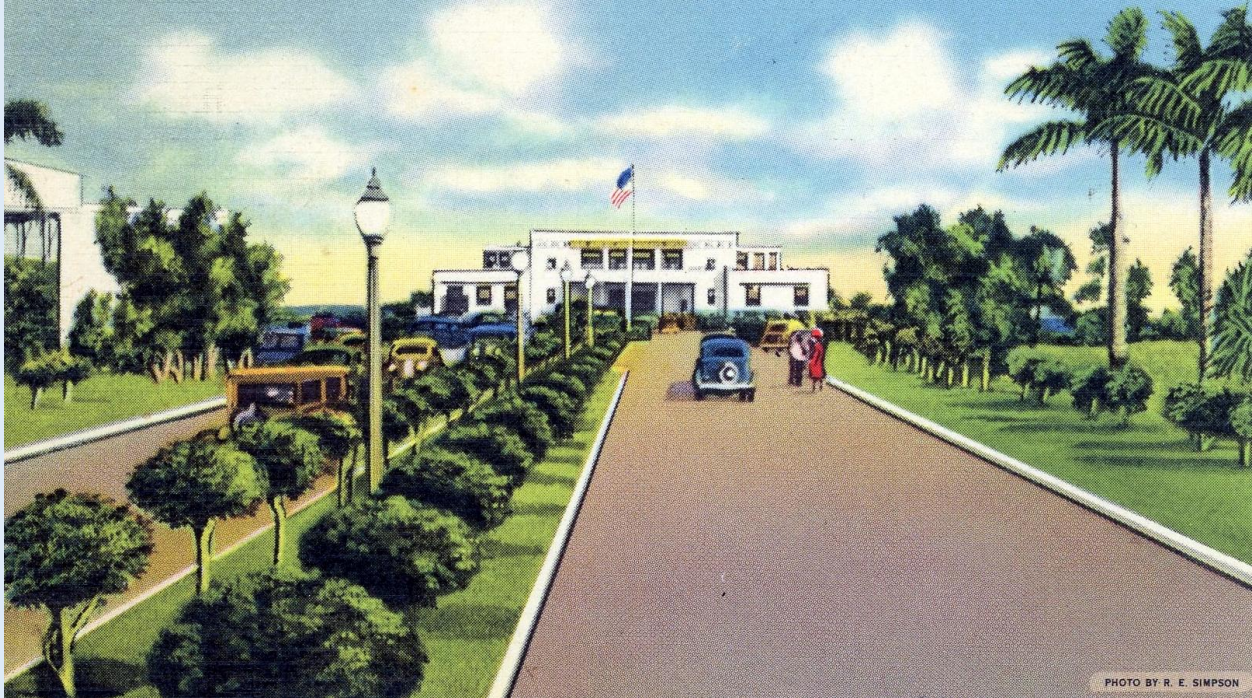
Entrance and Driveway to a Beautiful Estate,  
Miami, Florida

Photo by Romer

Entrance and Driveway to a Beautiful Estate - Miami, Fla. - ca. 1940s.

ENTRANCE TO PAN AMERICAN AIRPORT. COCONUT GROVE, MIAMI, FLORIDA

33



Entrance to Pan American Airport - Coconut Grove - Miami, Fla. - ca. 1939.



Lincoln Road - Miami Beach, Fla. - ca. 1940s.



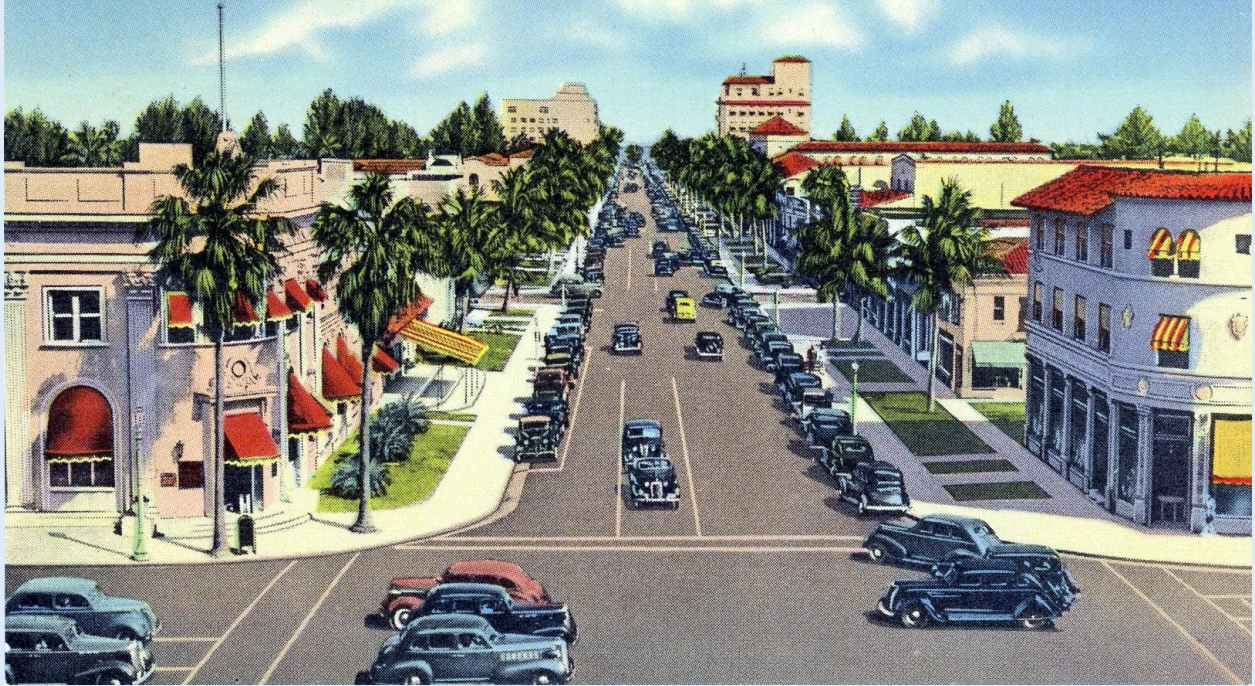
Lincoln Road - Street Scene - Miami Beach, Fla. - ca. 1940s.



Lincoln Road at Collins Avenue - Miami Beach, Fla. - ca. 1950s.

Lincoln Road — Miami Beach, Florida, looking East

72



Lincoln Road looking East - Miami Beach, Fla. - ca. 1930s.

M-235 LUMMUS PARK AND BATHING BEACH, MIAMI BEACH, FLA.



PHOTO BY G. W. ROMER

3A-H683

Lummus Park and Bathing Beach - Miami Beach, Fla. - ca. 1939.



Lummus Park and Public Bathing Beach - Miami Beach, Fla. - ca. 1940s.



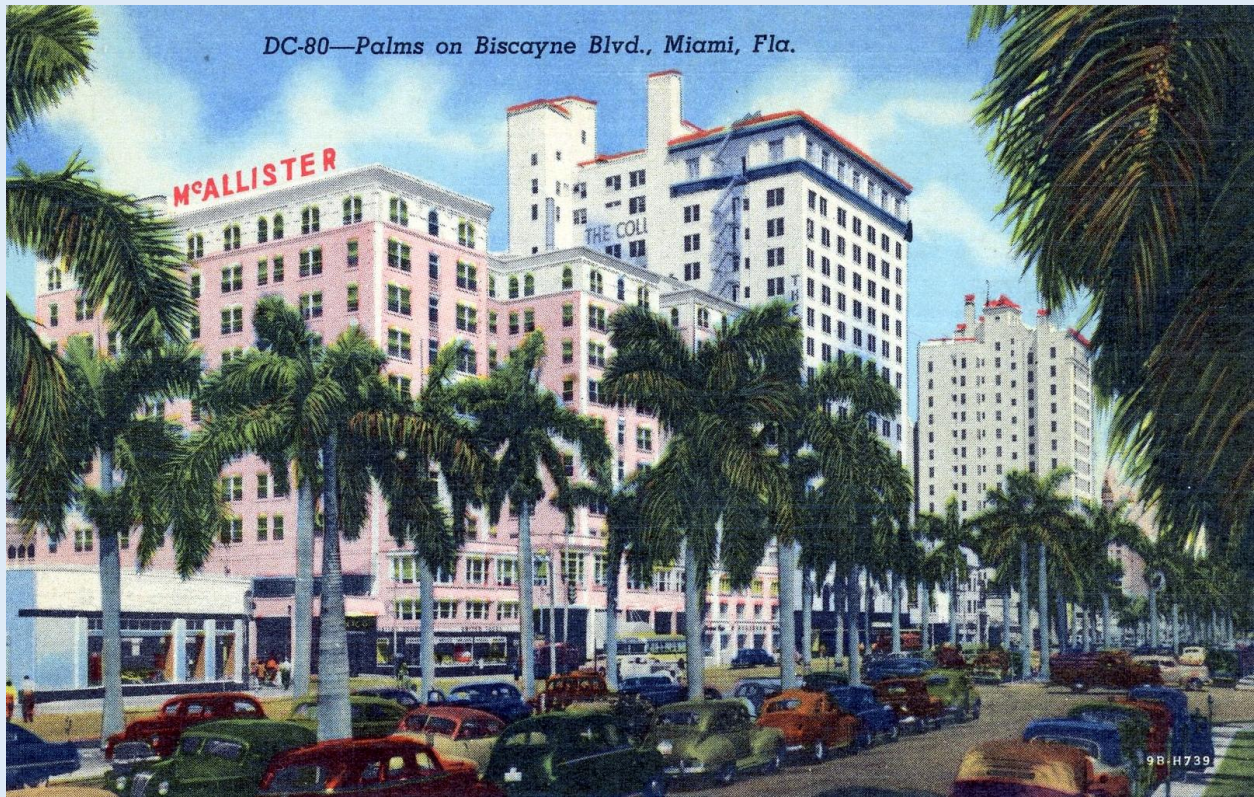
New Casino at Ocean Beach - Miami, Fla. - ca. 1920s.



Ocean Drive - Lummus Park and Hotels - Miami Beach, Fla. - ca. 1948.



Opening Day at Frederich's - the World's Finest Food Store - Miami, Fla. - ca. 1953.



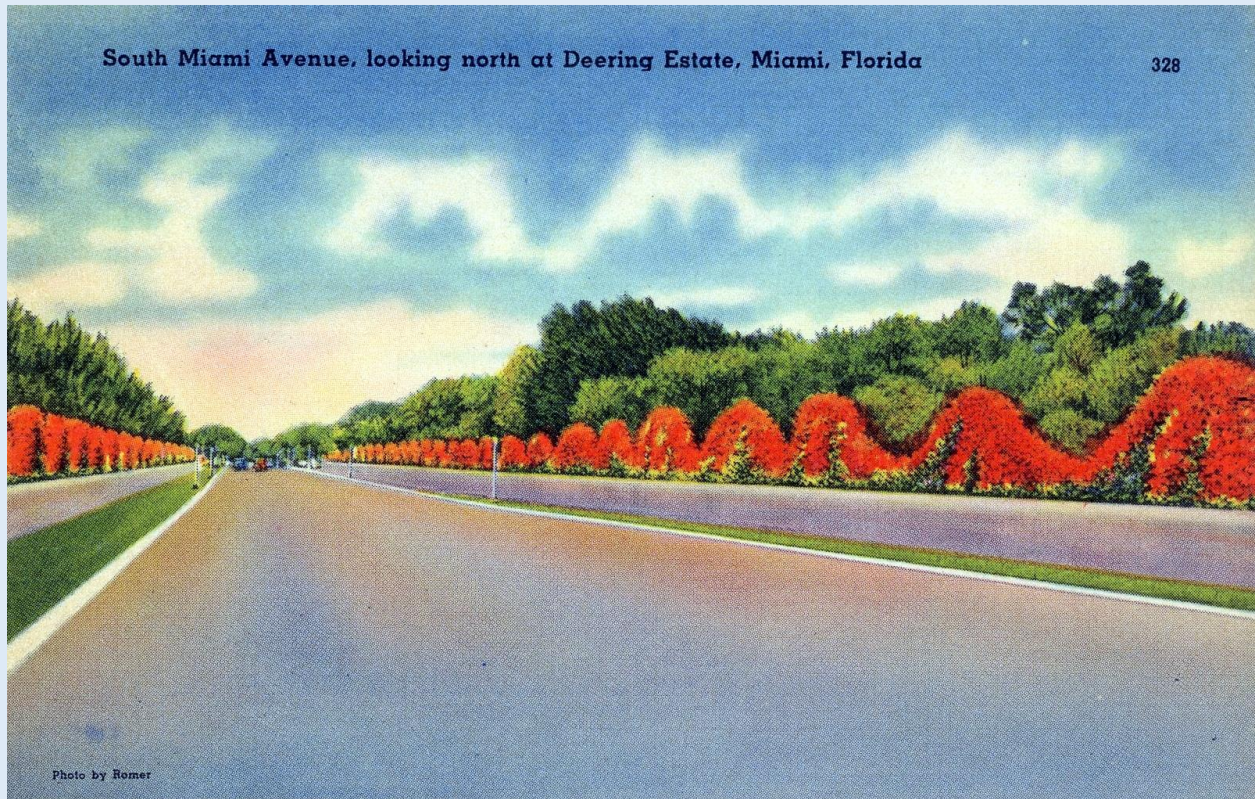
Palms on Biscayne Blvd., Miami, Fla. - ca. 1940s.



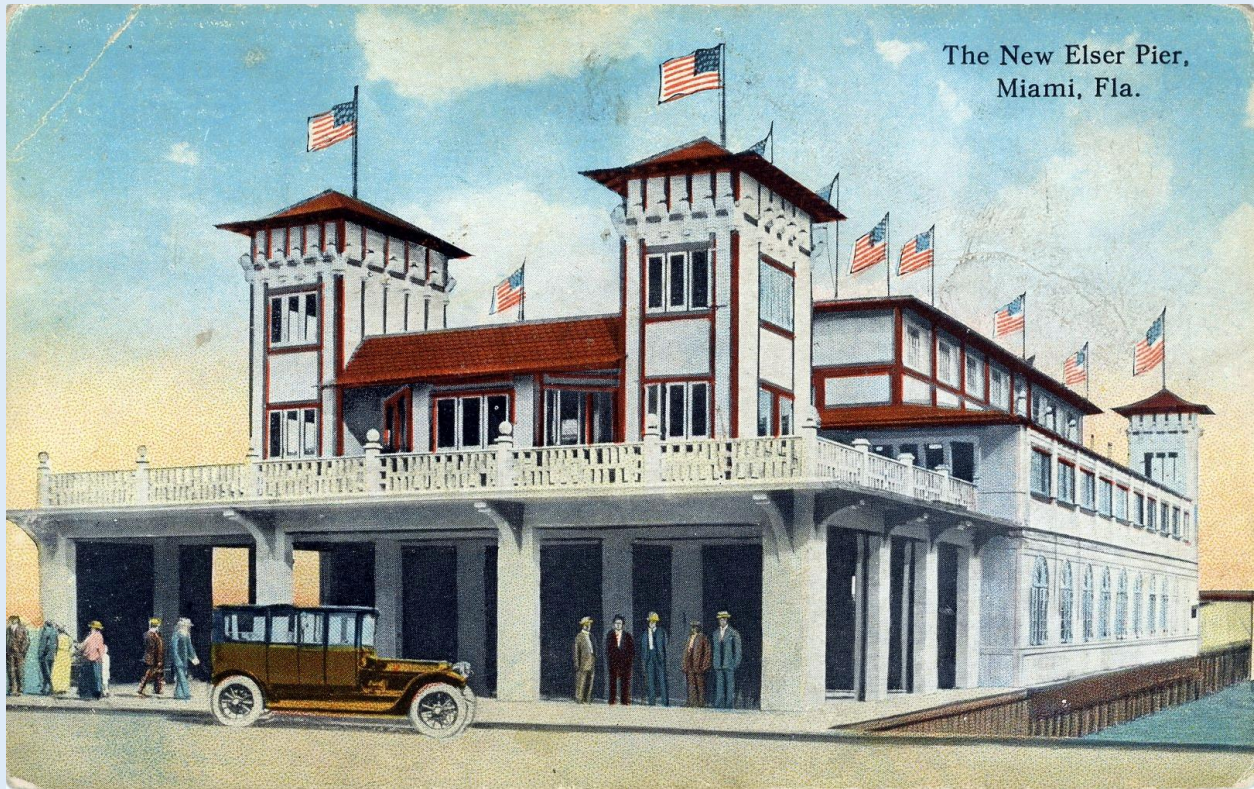
Rivo Alto Island - Miami Beach, Fla. - ca. 1940s.



Sightseeing Tram at the Exotic Lincoln Mall - Miami, Fla. - ca. 1980s.



South Miami Avenue - looking north at Deering Estate - Miami, Fla. - ca. 1940s.



The New Elser Pier,  
Miami, Fla.

The New Elser Pier - Miami, Fla. - ca. 1915.