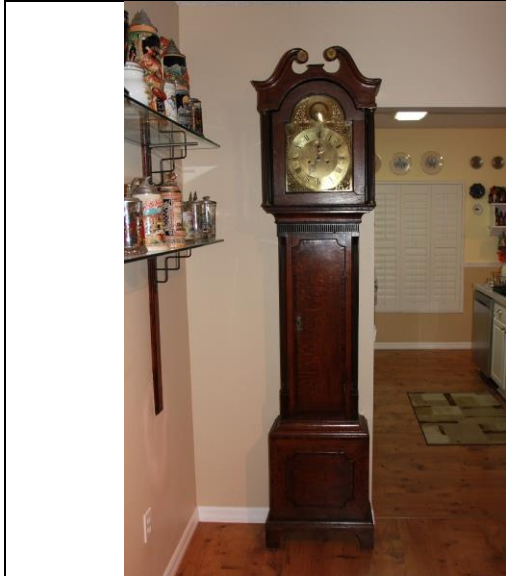
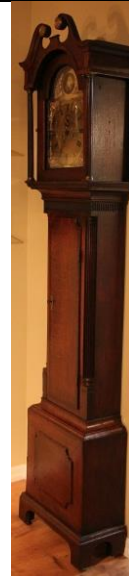


Thomas Miles - London, England - Arched Brass Dial - Tall Case Clock - (circa 1770)



WNS-CLK-179 - Thomas Miles - 1770 Brass Dial - Full Front View



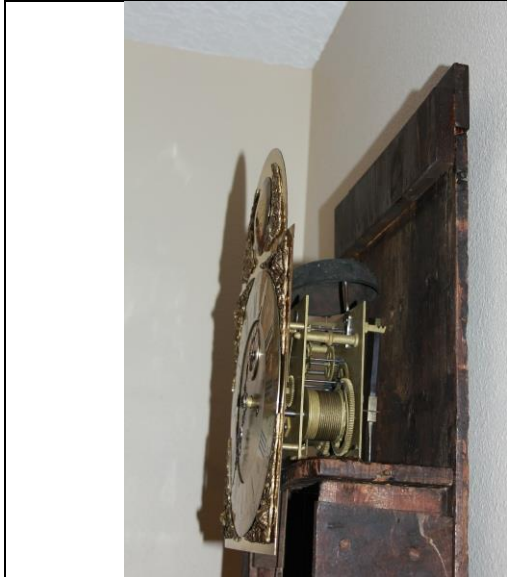
WNS-CLK-179 - Thomas Miles - 1770 Brass Dial - Left Front View



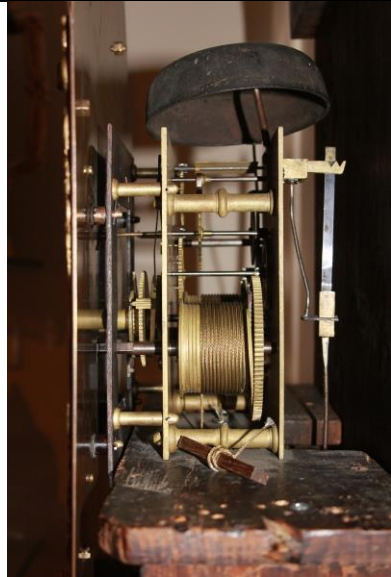
WNS-CLK-179 - Thomas Miles - 1770 Brass Dial - Full Front Brass Dial View



WNS-CLK-179 - Thomas Miles - 1770 Brass Dial - Brass Name Plate View



WNS-CLK-179 - Thomas Miles - 1770 Brass Dial - Full Front Brass Dial View



WNS-CLK-179 - Thomas Miles - 1770 Brass Dial - Right Side Movement View



WNS-CLK-179 - Thomas Miles - 1770 Brass Dial - Top of Weights View



WNS-CLK-179 - Thomas Miles - 1770 Brass Dial - Handmade Hook View



WNS-CLK-179 - Thomas Miles - 1770 Brass Dial - Weights and Pendulum View



WNS-CLK-179 - Thomas Miles - 1770 Brass Dial - Case Door View

Thomas Miles – Brass Dial - Tall Case Clock (circa 1770)

This is a nice tall case clock featuring an arched 18th century Brass Dial signed 'Thomas Miles'. The case is made from solid oak and mahogany veneers. Not much is known of the clockmaker Thomas Miles other than a listing in the *Watchmakers and Clockmakers of the World* by Brian Loomes that states, "MILES, Thomas. London (St. James' Walk, Clerkenwell) cc1768-99."

The date of 1770 is accurate due to the style of the dial and the known active business dates of Thomas Miles.

Dial: The brass dial is in superb original condition. It measures 12" wide by 14-1/2" high. The dial features an outer chapter ring with small engraved Arabic numerals on the outside (increments of 5), the spandrels are solid brass at all four corners, the lunette has a round plate with the signature of Thomas Miles and two spandrel sections on its sides. All the spandrels, chapter rings and round signature plate are attached to the dial with antique square screws. The blued hour, minute and seconds hands appear to be original.

Bonnet: The bonnet features a swan's neck pediment that terminates in brass rosettes. The fluted columns are housed on brass bases. There is some mahogany veneer (vertical stripes) along the edges and the finial chimney of the bonnet's top section. The arched bonnet door features a small ornate knob that is made from brass. The glass appears to be original.

Trunk: The sides of the trunk section have inset matching fluted columns at the sides. The case door measures 9-1/2" wide x 32-1/2" high and is made from quarter sawn oak and has curved edges at the top. The lock escutcheon is a fancy designed and attached piece made from brass. The lock and key appear to be original. There is a handmade hook in the corner of the inside case to hold the winding key.

Base: The base section features a shield panel made from solid quarter sawn oak (matching the case door) with curved edges. The case stands on solid oak feet with large curved cutouts in the front and side sections. The entire outer base has mahogany veneered stripe sections.

Movement: The hand-made time and strike movement (eight-day duration) is made from brass. The weights and straight rod pendulum appear to be original.

The clock stands 92" tall (to the top of the swan's neck pediment), 20-1/2" wide and 10" deep.

Item ID: WNS-CLK-179