



A Beautiful Park in Florida - ca. 1954.



A Charming Lily Pool in the Heart of Florida - ca. 1940s.

231. A COCOANUT GROVE IN TROPICAL FLORIDA.



A Coconut Grove in Tropical Florida - ca. 1930s.



A Palm Bordered Golf Course in Sunny Florida - ca. 1947.



A Park Scene in Florida - ca. 1940s.



A Peaceful Florida Retreat - ca. 1945.



A Purple Bougainillea Arbor in the Sunshine State, Florida - ca. 1948.



A Tropical Paradise in Beautiful Florida - ca. 1940s.



7A-H1521

An Exotic Flower Garden in Florida - ca. 1940s.



Arbor of Purple Bougainvillea in Florida - ca. 1970s.



Azaleas in Bloom at the Sylvan Abbey, Florida - ca. 1965.



*Beautiful Florida*

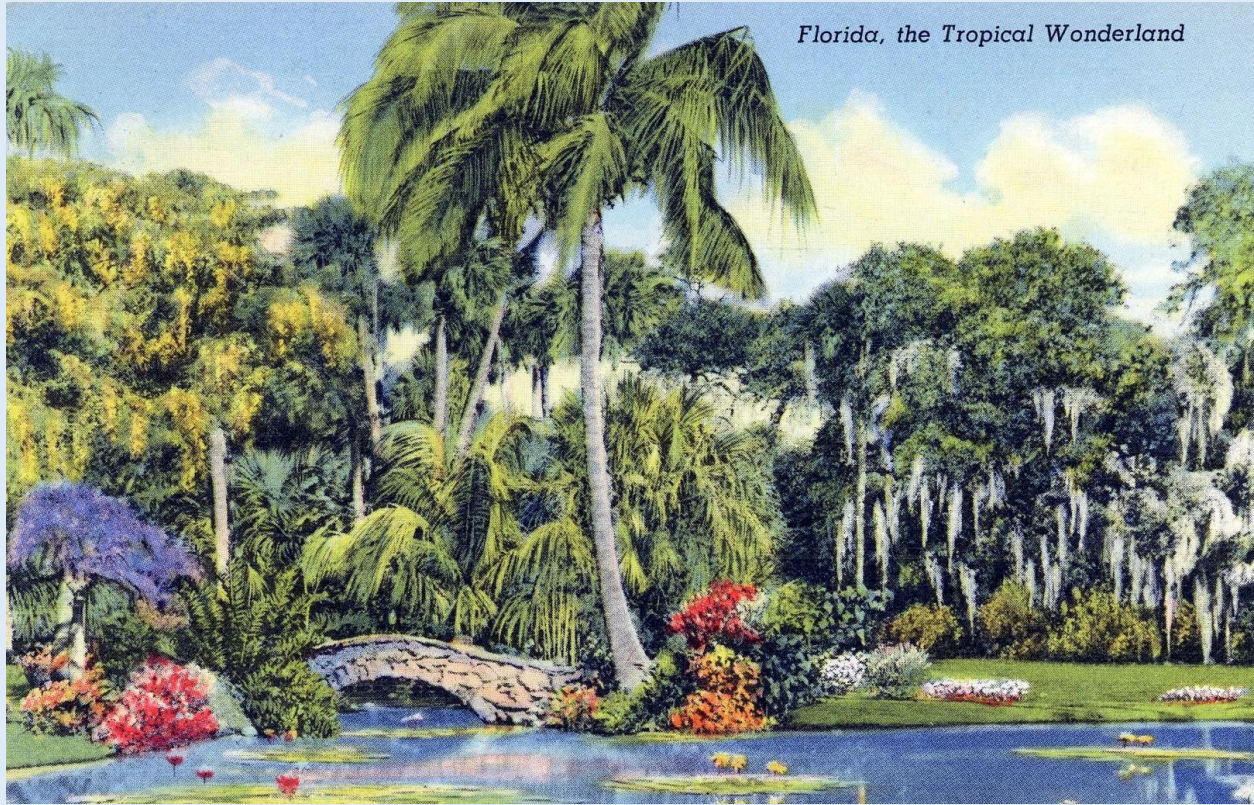
Brilliant Azaleas Border a Walk in a Florida Tropical Gardern - ca. 1971.



Flamingos in Tropical Florida - ca. 1950s.



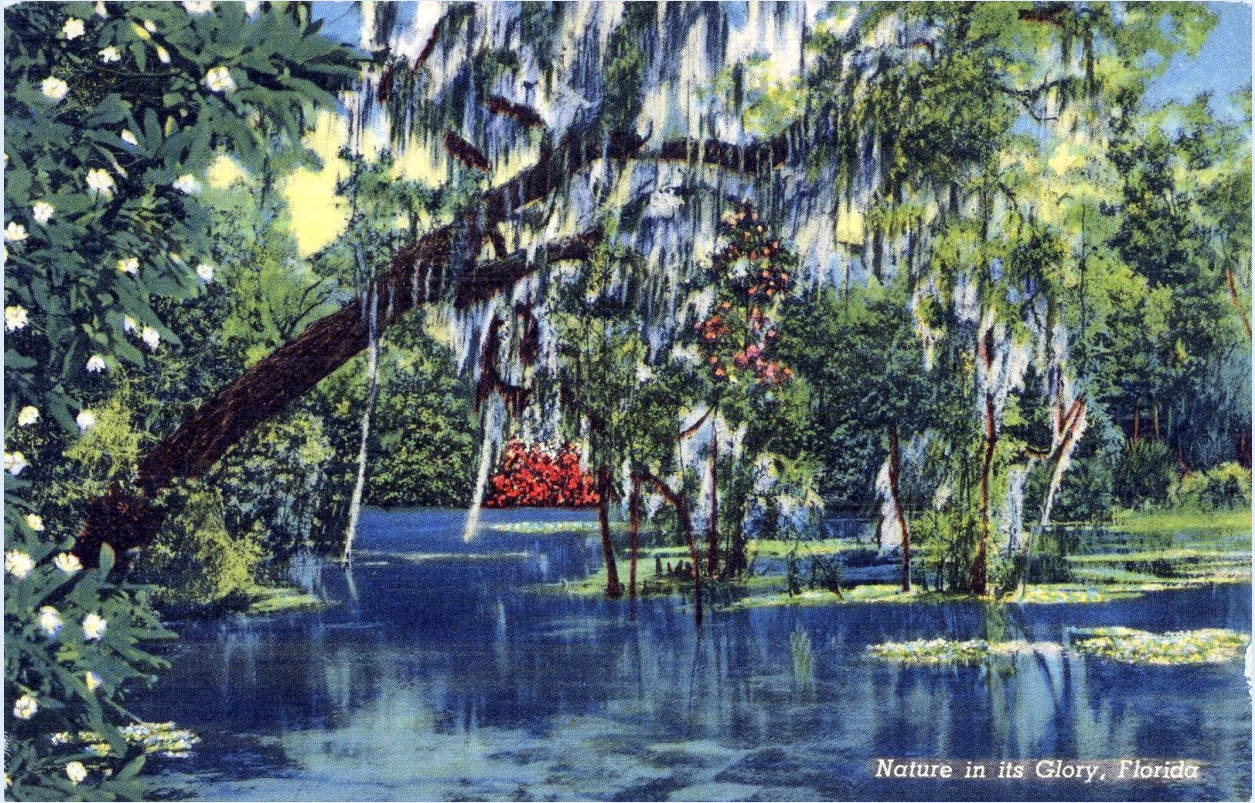
Flamingos in Tropical Florida - ca. 1959.



Florida, the Tropical Wonderland - ca. 1946.

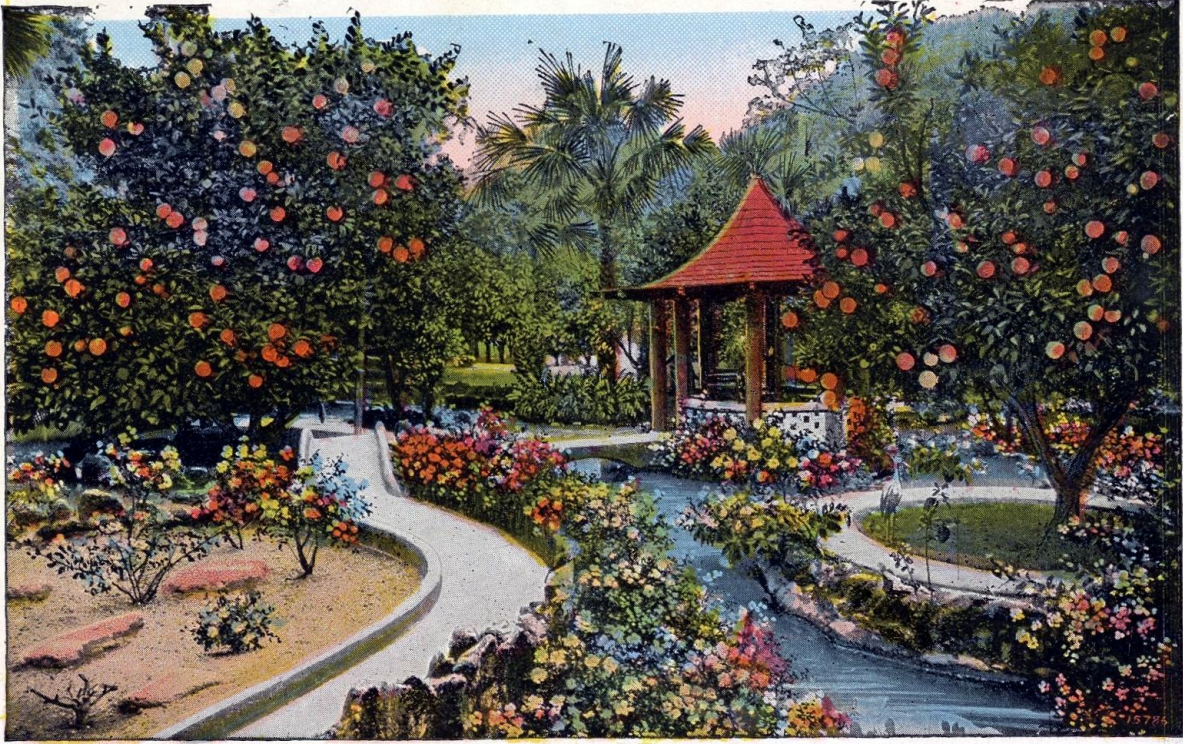


Florida's Beautiful Indian River - ca. 1949.

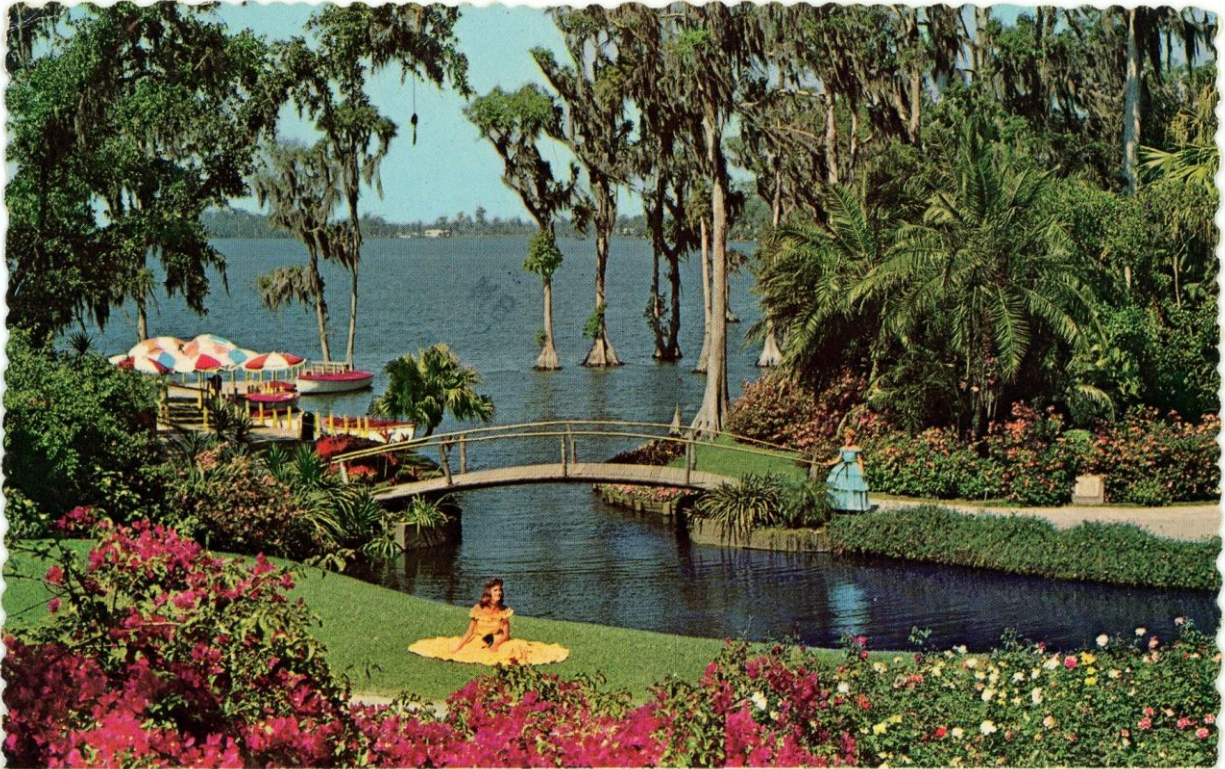


Nature in its Glory, Florida - ca. 1950s.

ONE OF THE BEAUTIFUL JAPANESE GARDENS, FLORIDA.



One of the Beautiful Japanese Gardens, Florida - ca. 1920s.



*Roses, Bougainvillea and Cypress Trees*

Roses, Bougainvillea and Cypress Trees, Florida - ca. 1977.



Sun Bathing Under Tropical Florida Skies - ca. 1940s.



Sunken Garden in Florida - ca. 1940s.



Tropical Garden and Lake, Florida - ca. 1956.



When it's Hydrangea Time in Florida - ca. 1950s.

917 WHERE THE WITHLACOCHEE AND SUWANNEE RIVERS MEET IN FLORIDA

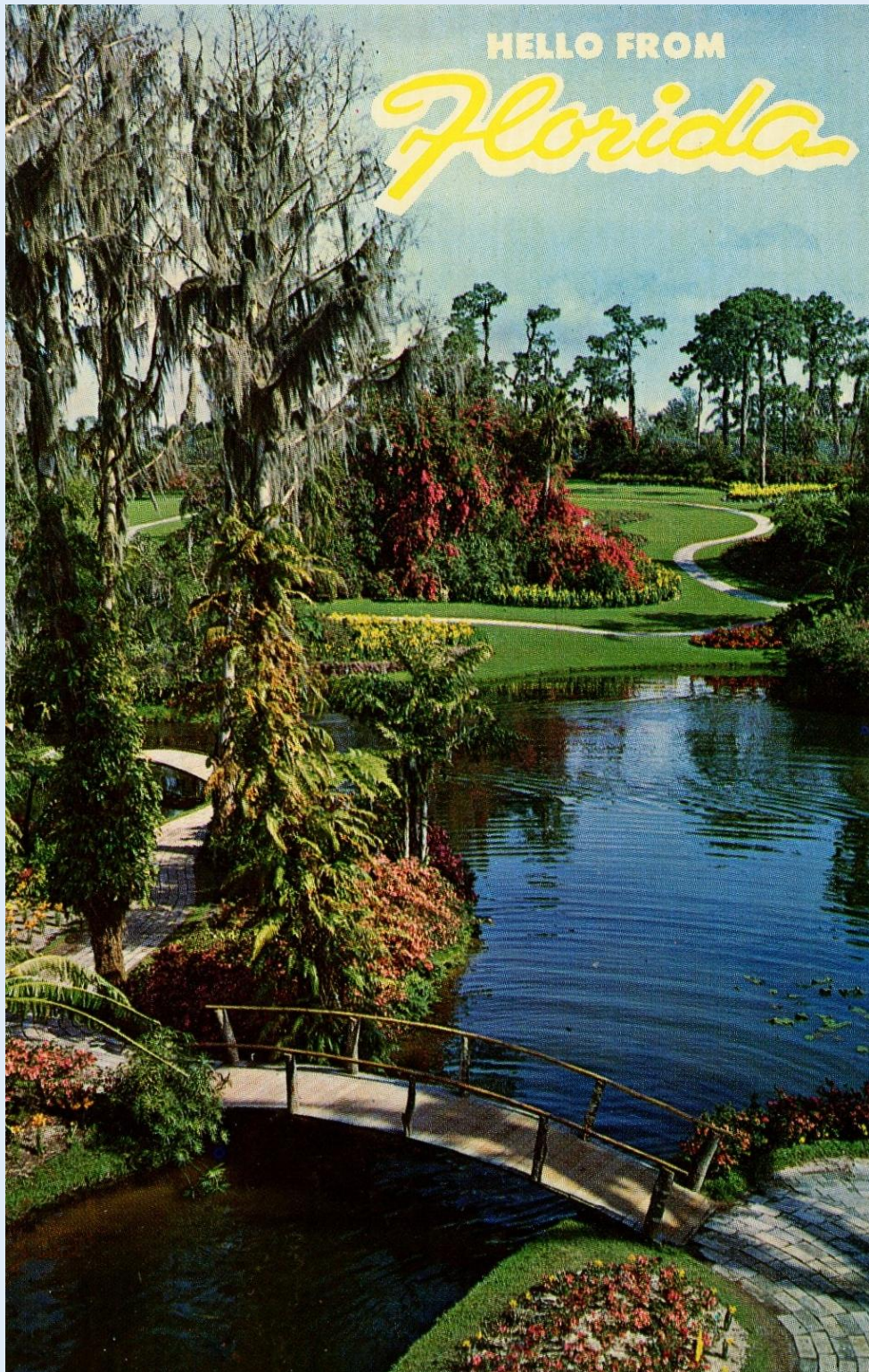


6A-H2316

Where the Withlacochee and Suwannee Rivers meet in Florida - ca. 1939.



Winding Trails, Beautiful Flowers and Waterways 'America's Tropical Wonderland' - Florida - ca. 1980s.



World Famous Beautiful Cypress Gardens, Florida - ca. 1980s.